



NEBRASKA

Fall 2022

ANNUAL REPORT

For the **2021-2022** Fiscal Year

We are dedicated
to the thousands of students
who dream, plan and work
toward their educational and life goals.

**Southeast Community College
Educational Foundation
301 S. 68th St. Place
Lincoln, NE 68510-2449
402-323-3411**

southeast.edu/educationalfoundation

From the SCC Foundation Executive Director

Dear Southeast Community College Alumni, Parents and Friends,

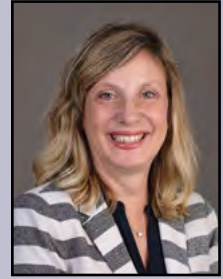
THANK YOU.

Of all of my duties as the Executive Director of the SCC Foundation, this is truly one of my favorites: expressing my sincere gratitude to our wonderful community of donors and alumni for another fantastic year.

We have so much to be thankful for and a lot more to be thankful for in 2023-2024. SCC will soon have student housing on the Lincoln Campus that will accommodate around 250 students and will open in early 2024. Thanks to the generous support of so many, more than 20 new endowed and annual funds were established this past year, and the Foundation was able to distribute nearly \$5 million in scholarship funds for SCC students. In addition, more than 550 donors believe in our mission and donated to the Foundation and College this past year, a 200% increase over the previous year.

As you turn the pages, you will see the names of numerous community members and alumni who have generously donated in support of our school's mission. Our students understand and appreciate how their SCC experience is enhanced by your investment. As their testimonies show in this report, **you** play an integral role in creating opportunities for them to achieve their dreams.

Your philanthropic investment provides access to a Southeast Community College education for students who may not have had the opportunity to attend college. On behalf of the SCC Educational Foundation and Board of Directors, thank you. If you haven't yet donated, please consider doing so. It's an investment in our local community and the future workforce of Nebraska.



Michelle Birkel

Michelle A. Birkel, Executive Director
SCC Educational Foundation



"I won't have to worry about how many hours I will have to work to pay off my schooling while balancing the time I have for my education," said scholarship recipient, Petrona Garcia. "It has been an honor to receive this scholarship and thanks to you I am one step closer to becoming an elementary school teacher. I will make a difference in other students' lives as you did to mine."



Donate securely online at
southeast.edu/sccd donate

Printable form available at
southeast.edu/sccd donation form

Donate Today!

More than
3,030
scholarship awards
at a value of more than

\$4,700,000

From the SCC President

On behalf of the Southeast Community College Board of Governors, administration, faculty, and staff, I want to thank the Southeast Community College Educational Foundation and all of its generous and thoughtful contributors. SCC is committed to its mission of providing accessible, dynamic and responsive pathways to career and technical, academic transfer and continuing education programs. SCC seeks to create futures through inquiry, knowledge and application. The SCC Educational Foundation plays a critical role in supporting this mission. This past year the Foundation awarded more than 3,000 scholarships at just under \$5 million.



SCC continues to pursue its vision to create destinations and the highest quality learning climates through permanent, innovative, modern, virtually linked, sustainable, and collaborative facilities and learning spaces. The College recently launched its Empower Capital Campaign in support of the following new facilities projects:

- Welding Technology Center – Lincoln Campus
- Sandhills Global Technology Center – Lincoln Campus
- Construction Technology Center – Milford Campus
- Agriculture Career Center – Beatrice Campus

These new learning spaces will be instrumental in expanding the College's capacity to directly address Nebraska's skilled workforce gap. SCC is committed to investing in its students, industry partners, and communities throughout southeast Nebraska.

I am very thankful for the contributors and supporters of the SCC Educational Foundation. Your commitment to SCC is truly a gift to not only our students but to the entire 15-county community we serve. Thank you for your generosity, commitment, and support of Southeast Community College.

Paul Illich, President
Southeast Community College

“My college experience has been such an amazing experience, and you are part of the reason I am here. Thank you for your generosity and choosing me for this scholarship. You have helped me get one step closer to my future success. – Addy Kalkwarf”

How You Can Help

YOUR Gift Matters!

Your gift to the SCC Educational Foundation helps create life-changing opportunities for thousands of students each year. Investing in SCC students is an investment in our community and the future workforce of our college area, the state of Nebraska and our nation.

Online Donation

Visit southeast.edu/sccdonate to make your donation to the Path to Possible Fund, new or existing scholarships, facilities, or greatest need (general Foundation Support for Operations).

By Mail

IT'S SO EASY.....

Checks made payable to the SCC Educational Foundation can be sent by mail to:

SCC Educational Foundation
301 S. 68th St. Place
Lincoln, NE 68510

Please direct your gift's use on the memo line (i.e. scholarships, facilities). Gifts without designation will be directed to the area of greatest need.

SCC12

Visit southeast.edu/sccdonate and click on "Monthly" under Type of Request and then "Recurring" under Number of Monthly Payments.

Endowments

This is a perpetual resource because the principal remains intact. Investment income can be used to provide student scholarships or to support SCC programs. A new endowment in your name or a loved one requires a minimum investment of \$10,000.

Gift of Securities

Gifts of appreciated stocks, bonds and mutual funds are a great way to support SCC and our students. Not only will your contribution entitle you to an income tax charitable deduction, you also may avoid capital gains taxes. Arrange a gift of securities by calling the SCC Foundation Office at 402-323-3411.

Individual Retirement Account (IRA)

At age 72, a traditional IRA holder (unlike a ROTH IRA holder) must begin taking a taxable Required Minimum Distribution (RMD) from their IRA. Instead of taking the RMD amount as income and paying income tax, the IRA holder may donate the entire RMD or a portion of it directly to a 501(c)(3) charity like the SCC Foundation and avoid paying tax on the amount up to \$100,000 per year or \$200,000 as a couple.

Matching Gifts

Many companies offer a matching gift program that will match an employee's charitable contribution. All matching gifts benefit the same fund as your original gift and allow you to double your gift to SCC. To submit a matching gift and double your impact:

- Obtain a matching gift form from your company's personnel office
- Complete the donor/employee portion of your company's form and send it with your contribution to the SCC Educational Foundation. (Many companies also have an easy online process.)

Once we receive your form or your company's online request, we will verify your gift so that your company can make the match.

For additional ways to help, visit:

southeast.edu/educationalfoundation

Annual Scholarship Funds

Donations were received by the SCC Educational Foundation for scholarships between July 1, 2021, and June 30, 2022.

3M Maps	Entrepreneurship	Learn to Dream – McCool Junction	Nebraska Golf Association	Schuerman Welding Inc.
4G Steel Fabrication	Everett, Sr., Don Memorial	Learn to Dream – Mead	Nebraska Open-Beatrice	Seward Motor Freight Inc.
Abel Foundation	Falls City Learning Center	Learn to Dream – Norris	Nebraska Open-Lincoln	Sillman Family, Ken
Advanced Nuclear Coalition *	Farm Credit Services of America	Learn to Dream – Palmyra	Nebraska Open-Milford	Single Parent
Ameritas Charitable Foundation	Fillipi Foundation, Jerry & Blanche	Learn to Dream – Pawnee City	Nebraska Pork Producers Association	Skilled & Technical Sciences Teaching
Arts & Sciences Division	Fiserv	Learn to Dream – Seward	Nelson Family Foundation*	Skills USA Classic Golf*
Assurity Life Insurance Company	Garner Industries	Learn to Dream – Shickley	Nifty Fifties Ford Club	Snyder/Wilcox Family
Auto Body Supply	Haas Foundation, Gene	Learn to Dream – Syracuse-Dunbar-Avoca	Noerrlinger, Donald J. Memorial	Society of Plastic Engineers Brent Montor Memorial
Automotive Tools*	Haleon (formerly GSK Consumer Health, Inc.)	Learn to Dream – Tri-County	Northeast Class of 1957	Society of Plastic Engineers-Ed Garner Memorial
Automotive Tools Academic*	Hamel, Barb Memorial	Learn to Dream – Wahoo	Northwestern Energy Community Works	Southeast Nebraska Land Surveyors Association
Beatrice Campus Annual	Hampton Family Foundation	Learn to Dream – Wahoo Bishop Neumann	Nursing Forty et Eight	Sowers Club - Bob Milton Memorial
Beatrice Golf / Basketball Fund	Home Builders Association of Lincoln/Remodelers Council	Learn to Dream – Weeping Water	Peak, Rhiannon Memorial	Speedway Motors *
Black Hills Energy	Hughes Brothers Inc.	Learn to Dream – Wilbur Claytonia	Pershing College Alumni	Stephens & Smith
Boydston, Doug Memorial	HVAC Technology	Learn to Dream – York	Pfister Foundation, Grace	Stewart, Mike Memorial*
Brase Electrical Charitable Foundation	Intro to Drink Water Treatment*	Li-Cor, Inc.	Physical Therapist Assistant	Strain, Jack & Edna Memorial
Breslow Foundation	Intro to Wastewater*	Lincoln Campus, Annual	Pierce, Douglas Memorial	Surgical Technology
Brolhorst, Marvin Memorial	Jindra, Alden J. Memorial	Longinaker Memorial, C.W.	Plattsmouth State Bank	Thomas Memorial, Frank
Career Academy (The) (TCA) – Abel Foundation	J K Custom Carpentry	Lyon, Jerome E.	Pretzer, Irene & Verne	Thomas Memorial, Frank M.
Career Academy (The) (TCA) Seacrest	John Deere	Mandery, Alvin L. Memorial	Professional Surveyors Association of Nebraska	TMCO
Career Academy Scholars – SCC Foundation	John Henry's Plumbing, Heating & Air Conditioning	MESO	Reinke Manufacturing Company, Inc.	TRIO SSS Program
Carriage House	Johnsen Emergency Needs	MetalQuest Unlimited	Reiss Memorial	True Potential
Cattle National Bank & Trust	K2 Construction*	Midwest Early Corvette Club	Robinson Charitable Trust, Edward & Lida	Tuttle, Inc.
Celerion Biotechnology*	Kamrath, Marcus B. Memorial	Milford Campus Annual	Robinson Electric Construction	Ward, Maxine
Coffin, Leigh M. Memorial	Kawasaki Motors Manufacturing Corp	Molex Incorporated	Rotary Club of Beatrice	Welding Technology (Annual)
Concordia University-NE Parade of Homes	Kersenbrock, Nursing, Jody	Motorcycle, ATV & Personal Watercraft	Sandhills Software and IT	Wessel, Elmer ('71) Memorial*
Continuing Education	Kiewit, Peter Foundation	Nebraska City Learning Center	SCC Foundation Scholars	Woollam Foundation, J.A.
Cooper Family, Gary & Nita	Knutson, Kara Memorial	Nebraska Developmental Education Consortium (NDEC)	Schlake Legacy Women's Basketball, Kaye	
Cornhusker Bank	KWBE/KUTT		Scholarships for Excellence	
Cornhusker Corvette Club	Lancaster County Farm Bureau			
Cornhusker Early Ford V8 Club	Lawson, Louis L.			
Country Club of Lincoln	Leadership & College Success Conference			
Crete Carrier Diesel Technology	Learn to Dream – Ashland-Greenwood			
Curtis, Reid Memorial	Learn to Dream – Beatrice			
Davis/Chambers	Learn to Dream – Diller-Odell			
Deere Construction & Forestry Equipment	Learn to Dream – Exeter-Milligan			
Dental Assisting	Learn to Dream – Fillmore Central			
Diode Technologies	Learn to Dream – Friend			
Early Childhood Education	Learn to Dream – Heartland			
East Beatrice Business Action Committee/Beatrice Area Chamber of Commerce	Learn to Dream – Johnson-Brock			
EducationQuest	Learn to Dream – Johnson County			
Ellis, Winifred Memorial	Learn to Dream – Lewiston			
Energy Generation Operations Outstanding Intern Award	Learn to Dream – Lincoln			

* new scholarship

Total Assets

2016	\$21,379,563	Assets include: Cash & Investments, Accrued Interest Receivable, Pledges, and Property.
2017	\$23,059,563	
2018	\$24,998,563	
2019	\$27,964,568	
2020	\$29,236,185	
2021	\$36,959,277	
2022	\$34,826,557	

Endowed Scholarship Funds

Ackerman, Paul Memorial
 Acklie Charitable Foundation
 Agriculture Management & Production
 Aksamit, Gary L. Memorial
 Andrews, Terry Memorial HVAC
 Armstrong, Joe & Martha Memorial
 Arth, Alfred A. Memorial
 Associated General Contractors of America
 Barry, Leroy
 Bartek, Joanne Rose Memorial
 Bay, Howard
 Beatrice Campus General
 Beatrice Distinguished Alumni
 Beatrice Scholars
 Beatrice Student Activity
 Becker, Richard & Patricia
 Bender, Bill & Virginia
 Bergmeyer, Harley & Marcia Family
 Berniklau, Jacqueline Educational
 Bernlinda Memorial
 Big John Sigerson
 Board of Governors
 Bock, Sara Memorial
 Boden, Jerry and Kathy
 Bowen, Robert L.
 Brinkmeyer, Wayne Memorial
 Brownlee, Michael & Diane
 Buman, Ann E.
 Career Academy Scholars – Wallace & Kathleen Hare
 Career Academy Scholars – Ostergard
 Cheever Construction
 Coffin Family (Leigh F. Coffin, Jane M. Coffin & Leigh M. Coffin)
 College & Community Service Organization (CCSO)
 Cook, Bill & Betty
 Cornerstone Bank
 Crete Carrier-Robert Eicher
 Crete Carrier-James Melcher
 Croft, Mike Memorial
 Dallman Family, Gary & Peggy
 Darnall, Garet Memorial*
 Duncan Aviation
 Dunlap, G. Alan Memorial
 Dunn Medical Laboratory Technology,

Georgia
 Eberhard, Harold W. & Alice G. (Kohtz) – Building Construction
 Eberhard, Harold W. & Alice G. (Kohtz) – Business/Office Professional
 Eberhard, Harold W. & Alice G. (Kohtz) – Diesel Technology/John Deere Technology
 Eberhard, Harold W. & Alice G. (Kohtz) – Health
 Eberspacher, Dave Memorial
 Eicher, Robert & Janice
 Erickson & Sederstrom
 Esau, Kent Memorial (Agriculture)
 Esau, Kent & Patricia (Nursing)
 Esch, William R. Memorial
 Eustis Body Shop-Dave Berke Auto Body Memorial*
 Everhart, Dan
 Evers, Henry & Judith
 Excellence in Nursing
 Fairbury General
 Farabee, Dale (Welding)
 Farmers & Merchants Outstanding Faculty & Staff Award
 Farnsworth Wittmann, Teresa
 Fritz, Madaleine
 Gage County Nurses
 Gasper, Bud Memorial
 Gatzemeyer, Dwight
 Gehrke Memorial
 Graff, Willard “Bill” Memorial
 Grovert, C.L. Red & Alice Memorial
 Hamilton Sundstrand
 Hanna, Sharon
 Harder, Eugene Memorial
 Houghton, Larry Memorial
 Havener, Elton “Al” Memorial
 Headrick, Dr. Dennis A. & Lorie S.
 Heinke, Jim
 Henney, Deloris Memorial
 Herman, Charlie & Bill / Stanley Sr. & Pauline Matzke
 Houser, Eleanora & Robert
 Huck Family
 Invest in the Best
 Isemann, Dr. Jim Travel (Formerly Global Ed Travel)*
 Jewell & Co., Marvin E.

Johnson, Lonnie Memorial
 Johnson, Ruth M. & Ralph D. Memorial
 Kamtz, Jerry (Surveying & Drafting)
 Kaspar, Larry Cerny
 Kawasaki Motors Manufacturing Corp.
 Kenkel, John & Lois
 Kenner, James & Janice & Family
 Kersenbrock, Jody (Nursing)
 Kness, Larry
 Kness, Roger Memorial
 Knoche Family, Everett
 Koenig, David L. & Douglas D.
 Kohout, Norman
 Kral Family
 Krause, Paul C. (Engineering)
 Kros, Gene Memorial
 Kubicek, Dave “Kuby”/Sid Dillon Auto Collision Repair Technology
 L & K Machine LLC
 L & K Machine LLC (Business)
 Landis, Frank & Mary Memorial*
 Larsen, Engvert & Darrol
 Lincoln Campus Endowment
 Lincoln Pulmonary Community Respiratory Care
 Lindley Agriculture Management & Production*
 Lindley Family
 Matzke, Stan Jr.
 Matzke, Stanley & Pauline
 Mehuron, Nancy Memorial
 Merchant, David E. & Connie L.*
 Metes, Telmang Memorial*
 Meyer, Larry
 Milford Campus Director
 Milford Campus General
 Milford Campus Transportation
 Molex/Delphi
 Montague, Elizabeth - DAR
 Muhleisen, Pat & Dean Memorial
 Nebraska Open-Area
 Networks, Inc.
 New Horizons
 Nippert, Joyce Memorial
 Noler, John Trucking Memorial
 Normil Foundation- Duane & Betty Starr*
 Odvody, Dennis Memorial
 Olson, Wilmer “Bill” Olson Memorial Opportunities
 Ourecky Family, Lloyd & Doris
 Parent, Tori Memorial
 Pepsi
 Peterson, Dennis J. Memorial
 Petsch, Ron
 Pick, Gary Memorial
 Pinnacle Bank
 Plummer, Gordon
 Pohlmann Family, Raymond & Marjorie

Pospisil, Laura B. & Frank J.
 Power, James C.
 Project Upbeat
 Reed, Lane A. (Precision Machining)
 Reeves, Mavis
 Rosenberg, Joe & Dot Memorial
 Rutledge, Corinne Memorial
 Saathoff, Ronald F. Memorial
 Sampson Construction
 Sass, Dr. Sharon & Charles
 Schlarb, Steve Memorial
 Schulte, Harold Memorial
 Shaw, Larry Memorial
 Sherman Family
 Shortridge, Harley Memorial*
 Sizer, Mike Land Surveying Memorial*
 Smejkal Jr., Robert Memorial
 Snyder, George & Lela Memorial
 Society of Manufacturing Engineers
 Soto, Marta C. /Gladys Olson Memorial
 Southard, J.R. Memorial
 SCC Faculty Association-Beatrice
 SCC Faculty Association-Lincoln
 SCC Faculty Association-Milford
 SCC Milford Veterans
 SCC Scholars
 Stark, Thomas J. Memorial
 Stauffer, Larry Memorial
 Stich, Ed Memorial*
 Suhr, Dorothea & Martin
 Swett Family HVAC
 Thimm, David M. Memorial
 Thunder Basin Coal Co.
 Tyrrell, Mike Memorial
 Vandeberg Family, Rodney P.
 Van Skiver, John Memorial (Design & Drafting)
 Venter, Don Memorial
 Vestal, Ralph & Rachel Memorial
 Volker Early Childhood Education
 Volker Food Service Hospitality
 Volker Financial Emergency
 Wach, Evan Memorial
 Wanek, Robert A. Memorial
 Watson, Alyce
 Watts & Hershberger PC
 Weaver, Lorraine L.
 Wekesser Family Fund
 Welding Technology-Lincoln
 Welsh, Lowell
 Wertz, William T. Memorial
 Wilsey, Frank & Edith
 Winger, Michael Memorial
 Wirthele, Carole & Arnold (Medical Science)
 Zabokrtsky Family

* new scholarship

“ I am very grateful and humbled. As a mom of five kids, I never thought I would be the one cheering over receiving a scholarship. Thank you for helping me take the next step of fulfilling a lifelong dream to become a nurse.
 – Amanda Fong ”

2021-2022 At A Glance

Fiscal Year 2021-2022 was another big year for the SCC Educational Foundation and for the College and students we serve. Twenty new endowed and annual scholarship funds were started in FY22.

Most importantly, the Foundation was able to distribute more than \$4,780,596 million in scholarships, a 135% increase over FY21!

198
Annual
Scholarships

202
Endowed
Scholarships

400
Total Scholarship
Funds as of
June 30, 2021

\$34.8
Million in
Net Assets

20
New Funds
Created This Year

More than
3,030
Scholarship Awards at a
value of more than
\$4.7
Million



New Scholarship: Kody Berner Scholarship



Kody Michael Berner was born May 1, 1999, in Ventura, California. The first of three spirited boys, Kody was born a compassionate leader and often forged his own path. He loved life and

lived it on his own terms.

Berner was a die-hard Husker fan, and played football, soccer and basketball while growing up. As he got



older, homework often took a back seat to playing with friends, doing school projects in the lab, or working outside. He was excellent with his hands, fabricating parts, helping his dad build their home, or fixing just about everything.

Kody didn't want to go to college after high school. He started his welding career immediately after graduation but found there were numerous trades he was interested in and worked in numerous vocations, including construction, auto and diesel repair, ranching, and highway maintenance/asphalt. Four years after graduating from high school, he decided to concentrate again on welding, and began the Welding Technology program at Southeast Community College in Lincoln.

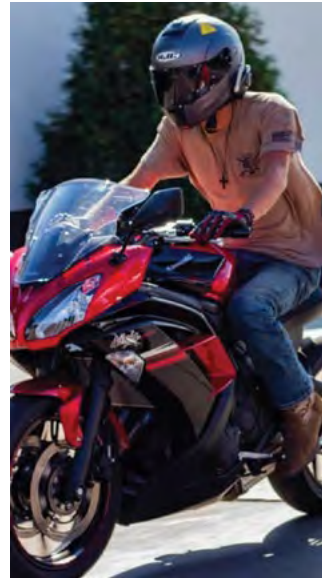
Kody lost his life in a motorcycle accident on Oct. 5, 2022. Since he was an organ donor, he was able to help others through his death. His Memorial Scholarship will help ensure his legacy will continue in a meaningful way.

Since he enjoyed his experiences in the welding program, this scholarship will be shared with other students like him.

Thank you Berner family for establishing this scholarship in memory of Kody and honoring his legacy.

For additional information on this scholarship or if you have questions on establishing an endowed fund or scholarship, contact the Foundation Office at 402-323-3411.

To donate, go to southeast.edu/sccdonate and select Scholarship Fund under Gift Designation.



Path to Possible Legacy Society Members— SCC is Part of Their Estate Plan

The Path to Possible Legacy Society was established in 2021 to recognize the generosity of individuals and families who have included Southeast Community College in their will or other forms of planned giving. As a member of the Path to Possible Legacy Society, donors are recognized in our Annual Report and invited to special events throughout the year. Membership to the Path to Possible Legacy Society is available to anyone who informs the SCC Foundation. These gifts help ensure our future and can provide significant benefits to donors.

- Anonymous (1)
- Sara Bock *
- Dale N. Brinkman *
- Vernon (Charlie) Hermann (Matzke Scholarship)
- John and Mary Kaldahl
- Norman Kohout *
- Elmer A. Kral *
- Frank and Polly Landis *
- Louis L. Lawson
- John Marsh
- Ronald & Chris Pearson
- Luther Manual Riblett *
- Neal A. Thomas *
- Jim Vyhidal

* Deceased

SELECTING A CHARITY FOR YOUR PLANNED GIVING

One of the best ways to increase the impact of your charitable giving while still providing for your loved ones is through planned giving. Below are some opportunities to consider when deciding to leave a legacy:

- A bequest in your will.
- Assignment of all or part of an investment account.
- Add/Change IRA or life insurance policy beneficiary.
- Divest of real property while maintaining a life interest.
- Gift Annuity which provides for charitable deduction and a fixed income stream while you're alive.

A financial advisor or legal counsel can help you set up a planned gift. If the Southeast Community College Educational Foundation is a good fit for you and your desire to make a lasting impact, contact the SCC Foundation at 402-323-3411.

Southeast Community College Foundation is registered with the IRS Department of the Treasury (EIN: 51-0168407) and is exempt from federal income tax under the provisions of Section 501(c)(3) of the Internal Revenue Code of 1954.

Exciting New Partnership: \$7.6 million Career Pathway Scholarship established at Southeast Community College-Milford

Scholarship recipients will be able to choose from the following SCC programs:

Construction:

- 🏠 Building Construction Technology
- 🏠 Concrete Construction Technician
- 🏠 Electrical & Electromechanical Technology
- 🏠 Heating, Ventilation, Air Conditioning & Refrigeration Technology
- 🏠 Land Surveying/GIS/Civil Engineering Technology
- 🏠 Plumbing Technology

Manufacturing:

- 🏠 Energy Generations Operations
- 🏠 Manufacturing Engineering Technology
- 🏠 Nondestructive Testing Technology
- 🏠 Precision Machining and Automation Technology

Transportation:

- 🏠 Auto Collision Repair Technology
- 🏠 Automotive Technology
- 🏠 Deere Construction & Forestry Equipment Technology
- 🏠 Diesel Technology-Truck
- 🏠 Diesel-Ag Equipment Service Technology
- 🏠 Ford ASSET
- 🏠 GM ASEP
- 🏠 John Deere Tech

Southeast Community College has been selected by the Walter Scott Family Foundation to establish a Walter Scott Jr. Career Pathway Scholarship at SCC-Milford. The foundation has made an initial commitment of more than \$7.6 million over the next decade for this one-of-a-kind, transformational program.

According to Calvin Sisson, President and CEO of the Walter Scott Family Foundation, "Walter Scott Jr. believed that investing in young people through scholarships is one of the finest investments we can make as a society. The Foundation is proud to partner with Southeast Community College on a life-changing scholarship opportunity that develops future leaders for our state's skilled and technical workforce."

The innovative program will annually provide up to 50 students in skilled technology programs with the opportunity for a full scholarship that covers tuition, fees and room and board for four consecutive semesters. Additional amenities include an on-campus living and learning environment and program enrichment activities throughout the year providing program-directed and student-selected experiences that will offer unique opportunities to enhance and extend learning and career exploration beyond the classroom and promote cohort engagement and retention.

Student support and career placement will be coordinated by a full-time Scott Pathway director dedicated to the program. In addition, the Walter Scott Family Foundation and SCC will provide shared support for a success counselor for all Milford Campus students.

Funding for a Summer Bridge program is also being implemented to provide an opportunity for Scott Pathway Scholars to demonstrate leadership on campus by providing direct support for camps and activities related to career and technical education awareness for high school students.

SPS recipients will have the option to apply for a scholarship for books and tools as well.

"Southeast Community College's new partnership with the Walter Scott Family Foundation is an incredible opportunity for our students, employers, and communities by creating a pathway for students to earn a credential in one of the College's many programs that directly align with high-demand, high-wage, and high-skill occupations," stated Dr. Paul Illich, President of Southeast Community College. "One of the key goals of this new partnership is to create a unique learning community that will foster the development of vital life skills. The Walter Scott Jr. Career Pathway Scholarship program aligns seamlessly with the College's vision to be a national leader in developing high-contact technical and academic experiences through personal and sincere relationships with engaged and invested faculty, staff and administrators. This new partnership will also be instrumental in helping SCC expand its capacity to produce a skilled workforce in southeast Nebraska. On behalf of Southeast Community College, I want to express my appreciation to the Walter Scott Family Foundation for its tremendous generosity and commitment to the life-changing benefits of higher education."

The expected outcomes of the program are that all students will:

- Participate in a paid sponsorship, internship, apprenticeship, or employment in a related field.
- Secure full-time employment within six months of completing their credentials in an H3 job that aligns with their program of study.
- Complete their education with minimal to no student debt.

"This partnership is a great opportunity for students to receive a quality education in high-demand careers and graduate with little to no debt," said Ed Koster, Milford Campus Executive Director.

The first selection of 25 students will occur by the fall of 2023 with an additional 25 new students each consecutive year for a total cohort of 50 Scholars total per year in years 2-9.



Save Nebraska Hall Update



“Nebraska Hall has always been central to the students’ experience on the Milford Campus, and we want to keep that for the next generation of students who will attend.” – Ed Koster, Milford Campus Executive Director/Vice President Research, Planning and Technology.

1920s

Nebraska Hall was originally constructed in 1920-1921. It is currently the oldest existing building on the Milford Campus of Southeast Community College. At the time it was built it was named the Roosevelt Building and served as the hospital for the Soldiers and Sailors Home in Milford, Nebraska. The building was originally designed by Ellery Davis Architects.

1940s

In 1941, during the 55th session of the Nebraska legislature, Senator Stanley Matzke introduced Legislative Bill No. 148 to create the Nebraska State Trade School on the campus where the former Soldiers and Sailors Home once existed. Roosevelt Hall (Nebraska Hall) was converted into a dormitory and cafeteria for the male students of the school. It was later renamed Nebraska Hall. From 1941 until June 2019, it served generations

of students who attended the College.

Today

Nebraska Hall has always been central to serving students on the Milford Campus. Representing the rich legacy and success of the campus by once serving as a residence hall, this \$8 million project allows us to repurpose this iconic historic building from a residence hall to a centralized student hub while also utilizing its presence as the first impression for new and prospective students.

The success of our students depends on our ability to reduce barriers to their education. Nebraska Hall helps us achieve this goal by consolidating all major student services and creating a gathering place for students to collaborate together.



The second floor will function as a space with all the services prospective students need to become enrolled students including Admissions, Registration, Financial Aid, and the Business Office. The third floor is devoted to ensuring students are successful including the full array of student success functions including Advising, TRIO, Counseling Services, Accommodations, Testing and Career Services.

With the historic nature of the building, there are some ADA issues that will be addressed through the project. The current building does not have an elevator. In order to be cost effective and disturb the existing structure as little as possible, the plan is to extend the building to the north to create space for an elevator to be added. This also allows for the creation of a new “front door” to the campus.

Construction will commence in the spring of '23.



The first floor will serve as a student union. Research has shown that students learn a great deal about being successful outside of class interacting with their peers in addition to the formal instruction they receive. This student union will provide students space to work on group projects, study in a quiet environment, and have access to the technology they need during the evening.



Lincoln Campus Residence Hall



Currently, both the Milford and Beatrice campuses have residence halls. The first residence hall on the Lincoln Campus is scheduled to open January 2024. The building will be a three-story, 245-bed, state-of-the-art residence hall facility that includes a convenience store, laundry facility and a workout center. Common area lounges for residents with couches, televisions, pool and ping pong tables and a gathering kitchen will be available. Spaces were planned to establish living and learning communities, creating a sense of community and collaboration and enhancing retention, helping students achieve their academic goals. Until then, SCC has partnered with Nebraska Wesleyan to provide campus housing for SCC students.



Thank you, 2021-2022 Donors

Publishing the Annual Report each year is a small way the SCC Educational Foundation can publicly recognize those who made financial gifts. This list includes gifts made from July 1, 2021, to June 30, 2022. Every year, the list of benefactors grows with new friends to both the SCC Foundation and the College. We appreciate each and every one of these donations. Thank you!

Anonymous (10)		Brunkow, Alan & Debbie	Western, NE	Dickenson, Hildy	Lincoln, NE
Aalberg, Michael	Lincoln, NE	Bunner, Barbara	Boise, ID	Dinsmore, Steve	Lincoln, NE
Aguirre, Kathryn & Raymond	Lincoln, NE	Burt, Rebecca	Beatrice, NE	Doan, Houston & Sarah	Roca, NE
Aguirre, Sarah	Lincoln, NE	Burvainis, Peggy L.	Lincoln, NE	Dostal, Gary	Omaha, NE
Aksamit, Julie	Lincoln, NE	Byers, Chuck	McCool Junction, NE	Douglas, Barbara	Fort Collins, CO
Allen, Allan	Lincoln, NE	Byrn, Robert	Kearney, NE	Douglass, Rich & Susie	Cortland, NE
Baron, Dr. Amanda	Lincoln, NE	Campbell, Carrie A.	Lincoln, NE	Dowling, Bryan & Jean	Lincoln, NE
Andersen, Robert	Lincoln, NE	Campbell, Robert	Lincoln, NE	Dubs, Jay	Alliance, NE
Anderson, Wade	Centennial, CO	Cardwell, Thomas	Lincoln, NE	Duhon-Cormier, Aneka	New Iberia, LA
Andrews, Don	North Bend, NE	Carlson, Nancy	Lincoln, NE	Dunham, Sally	Lincoln, NE
Andrews, Jason & Roxanne Darnall	Lincoln, NE	Chapin, Debra	Marco Island, FL	Dunlap, Jay & Shirley	Milford, NE
Arfmann, William	Malcolm, NE	Chesley, Amy	Lincoln, NE	Eberspacher, Coral	Milford, NE
Arnold, Mari	Mesa, AZ	Chrastil, Susan	Crete, NE	Eberspacher, Marilyn	Milford, NE
Ashmun, Raymond & Mary	Portland, OR	Christensen-Nader, Lyndie	Lincoln, NE	Eicher, Judy	Lincoln, NE
Axlund, Dianne	Lincoln, NE	Christo, James & Vicki	Lincoln, NE	Eickhoff, Karl	Milford, NE
Bachmann, Joe & Penny	Lincoln, NE	Claassen, Janet & Elizabeth	Coralville, IA	Eitzman, Kathy	Lincoln, NE
Bady, Larry & Liz	Lincoln, NE	Clare, Dennis & Joan	Lincoln, NE	Elder, Judy	Beatrice, NE
Baillie, Jack & Alicia	Lincoln, NE	Clark, Bridget	Lincoln, NE	Elrod, Roger & Virginia	Lincoln, NE
Baldus, Mary	Lincoln, NE	Clark, Robert & Elizabeth	Wilber, NE	Endacott, Kent & Dorothy	Lincoln, NE
Balters, Michael & Monica	Lincoln, NE	Clifford, Charles III & Connie	Lincoln, NE	Erdkamp, Rebecca & Paul	Exeter, NE
Bartel, L. Jay	Lincoln, NE	Coffin, Marilyn	Beatrice, NE	Evans, Richard & Jocelyn	Lincoln, NE
Bartels-Eiland, Kaye	Lincoln, NE	Coffin, Mitchell & Vicki	Lincoln, NE	Evans, William	Lincoln, NE
Beckenhauer, Tom & Kari	Lincoln, NE	Cole, Debbie & Rick	Lincoln, NE	Everhart, Gloria	Fairbury, NE
Bell, Mark & Cheryl	Lincoln, NE	Cole, Ryan & Veronica	Omaha, NE	Exstrom, Bruce	Lincoln, NE
Berg, Michael	Pleasant Dale, NE	Colton, Ross & Julie	Lincoln, NE	Feit, Robert	Lincoln, NE
Betts, Sharon	Fremont, NE	Conrad, Jason	Lincoln, NE	Fenster, Lowell & Willa	North Platte, NE
Betts, Tony & Susan	Omaha, NE	Cook, James & Judith	Lincoln, NE	Feyerherm, Margarita	Lincoln, NE
Biernbaum, Wendy	Omaha, NE	Corbin, Charles & Mary	Lincoln, NE	Fogell, Daniel	Lincoln, NE
Biggs, William & Elaine	Lincoln, NE	Corey, Tyler	Lincoln, NE	Foote, Lori & Craig	Lincoln, NE
Billesbach, Mark	Odell, NE	Crook, Connie	Lincoln, NE	Foreman, Jon	Lincoln, NE
Birkel, Paul & Michelle	Lincoln, NE	Crosby, Robert	Traverse City, MI	Franke, Daniel	Blair, NE
Bishop, James & Carol	Lincoln, NE	Cullinane, Matt	Lincoln, NE	Fritz, Jon & Lynne	Lincoln, NE
Blessen, Rick	Crete, NE	Culwell, Terrell & Constance	Lincoln, NE	Fullerton, Sara	Lincoln, NE
Blok, Sheri	Lincoln, NE	Cummins, Bev	Lincoln, NE	Garetson, Jay & Jill	Wamego, KS
Bock, Jane	Crete, NE	Cusick, Nick & Ann	Lincoln, NE	Garrigan, Timothy & Robley	The Villages, FL
Boden, Jerry & Kathy	Milford, NE	Cyza, Greg	Columbus, NE	Garver, Jim & Rachel	Lincoln, NE
Boellstorff, Mark & Kathy	Johnson, NE	Damrow, Bonita	Bennet, NE	Gaul, Robert	Lincoln, NE
Boschult, Mary	Lincoln, NE	Danaher, Thomas	Lincoln, NE	Gerald, Bonnie	Hattiesburg, MS
Boyce, Ann E. & H.E.	Marco Island, FL	Daubert, John & Alexandria	Lincoln, NE	Gerrard, John & Nancy	Lincoln, NE
Boydston, Rick & Leslie	Grandview, WA	Davis, Barbara	Lincoln, NE	Getzschman, Scott	Ames, NE
Brandt, Kurt	Pleasant Dale, NE	Dawson, Thomas & Helen	Lincoln, NE	Gibbons, Patrick & Cynthia	Lincoln, NE
Brenneis, Ed & Sandy	Tekamah, NE	Dean, Angeliq	Plattsmouth, NE	Glathar, Kurt	Lincoln, NE
Brenneis, Kevin	Tekamah, NE	Dean, Nick & Sally	Lincoln, NE	Goldsmith, Randy	Lincoln, NE
Bromm, Curt & Vicki	Wahoo, NE	Decker, Rosi	Lincoln, NE	Gonzolas, Diane	Lincoln, NE
Brown, John & Luanne	Goodyear, AZ	Demaray, Breanna	Lincoln, NE	Goochey, Steven	Burwell, NE
Brown, Melinda	Lincoln, NE	Dibbern, Chris	Lincoln, NE	Goodrich, Stephen	Lincoln, NE
		Dickinson, Babette	Lincoln, NE	Gormley, Dennis	Amana, IA

Thank you, 2021-2022 Donors

Graf, Tom & Katie	Lincoln, NE	Johnson, Kathie	Lincoln, NE	Limbach, Catie & John	Lincoln, NE
Grauerholz, Randolph	Ashland, NE	Johnson, Kirsten	Phoenix, AZ	Lind, Carol	Polk, NE
Green, Barton	Lincoln, NE	Johnson, Paul & Sherri	Lincoln, NE	Lindley, Doris	Caldwell, ID
Grimminger, Lisa & Marc	Ceresco, NE	Johnson, Susanne & Ronald	Georgetown, TX	Liska, Brian	Seward, NE
Gross, Jon & Melanie	Lincoln, NE	Johnson, Wendy & Todd	Elba, NE	Lockmon, Glenn	Littleton, CO
Gustafson, Christopher	Lincoln, NE	Johnston, Michelle	Omaha, NE	Lorenzen, Carl & Diane	Blair, NE
Guthery, Diane	Lincoln, NE	Jones, Randall & Melina	Lincoln, NE	Louda, Dr. Svata & Rodney Otley	Salida, CO
Gutschenritter, Michael & Jennifer	Lincoln, NE	Kash-Brown, Susan	Lincoln, NE	Love, Gregory	Lincoln, NE
Haase, Jeffrey & Virginia	Lincoln, NE	Kaspar, Larry	Dorchester, NE	Lytle, Paul	Lincoln, NE
Hall, Jennifer	Lincoln, NE	Keene, Scott & Sara	Lincoln, NE	Mach, Steve	Roca, NE
Hall, Lori & Mitch	Ann Arbor, MI	Keith, Merikay	Lincoln, NE	Malcom, Anthony	Cozad, NE
Hall, Steve	Bennet, NE	Kenkel, John & Lois	Rochester, MN	Maliha, Sheryl	Howells, NE
Hamilton, Jim	Milford, NE	Kerssenbrock, Jody	Wilber, NE	Marsh, Danny & Laurel	Lincoln, NE
Hammons, Keith	Weeping Water, NE	Killman, Erin	Lincoln, NE	Marsh, Gayle	Doniphan, NE
Hanna Hall, Lori & Mitch	Ann Arbor, MI	Kilpatrick, George & Sherril	Lincoln, NE	Martinson, Melinda	Lincoln, NE
Hansen, Twyla	Lincoln, NE	Kilzer, Laurie	Lincoln, NE	Mason, Mark	Lincoln, NE
Hare, Tanya	Lincoln, NE	Kinley, Deb	Henderson, NV	Mason, Rachel	Weeping Water, NE
Harms, Mary Ann	Crab Orchard, NE	Kirby, Gerrine S.	Lincoln, NE	Matzke, Dorothy	Lincoln, NE
Harrifeld, Stacey	Lincoln, NE	Kirchner, Janet	Lincoln, NE	Matzke, Gerald & Lee-Ellen	Sidney, NE
Harrison, Robert & Debra	Lincoln, NE	Kisby, Zachary	Meadow Grove, NE	McConnell, Steve	Lincoln, NE
Hartman, Brad & Beth	Lincoln, NE	Klein, Marguerite	Lincoln, NE	McCord, Penny	Omaha, NE
Hartman, Linda	Lincoln, NE	Kleine, Jerry & Sandi	Grand Island, NE	McCord, Susan & Chad	Leander, TX
Harvey, Joshua	Lincoln, NE	Klimes, Ashton	Bellevue, NE	McFall, Christie	Mission Woods, KS
Heine, Steve	Lincoln, NE	Kness, Shirley	Milford, NE	Meier, Brian	Seneca, NE
Helmick, Ken	Omaha, NE	Knievel, Bob	Frederick, MD	Meisinger, Charles	Lincoln, NE
Helms, Susanne	Council Bluffs, IA	Knispel, Todd	Chanute, KS	Melson, Bill & Marise	San Antonio, TX
Hermann, Vernon "Charlie"	Lincoln, NE	Koch, Karen	Seward, NE	Merchant, Dave & Connie	Lincoln, NE
Herrera, Raquel	Lincoln, NE	Kostal, Frank	Loveland, CO	Metes, Isau	Elmwood, NE
Higuchi, Deb & Tad Fraizer	Lincoln, NE	Kostal, Donna	Papillion, NE	Miller, David & Cathie	Lincoln, NE
Ho, Nguyen	Lincoln, NE	Koster, Ed	Seward, NE	Miller, Joann	Lincoln, NE
Hoffart, David	Lincoln, NE	Kros, Millie	Weston, NE	Mitchell, Carollyn	Hickman, NE
Hohman, Thomas	Eagle, NE	Krumm, Kathleen & David	Lincoln, NE	Moeller, Galyn	Columbus, NE
Holley, Linda	Council Bluffs, IA	Kruse, Dale & Nancy	Beatrice, NE	Moore, Robin	Lincoln, NE
Holman, Nancy	Lincoln, NE	Kruse, Lyle	Omaha, NE	Morgan, Kelly	Beatrice, NE
Hoover, Jill	Lincoln, NE	Kube, Nancy	Lincoln, NE	Morledge, Jason & Lisa	Grand Island, NE
Hove, Ella	Lincoln, NE	Labenz, Richard & Janet	Lincoln, NE	Morris, Mark	Omaha, NE
Hovendick, K. & L.	Hickman, NE	Lackey, Brian	Kansas City, MO	Morrow, Robert & Sara	Lincoln, NE
Huck, Jack & Lynelle	Lincoln, NE	Lahman, Kathleen	Lincoln, NE	Morton, Rochelle	Lincoln, NE
Hurrell, Brad & Peg	Charlotte, NC	Landenberger, Toni	Diller, NE	Murdock, Lindsay	Hendersonville, NC
Dennis Hutsell Living Trust	Parker, CO	Landis, David	Lincoln, NE	Murphy, James	Lincoln, NE
Hynek, Debra	Lincoln, NE	Landis, Frank	Lincoln, NE	Murphy, Jim & Cheri	Lincoln, NE
Ito, Takeru	Greensboro, NC	Lang, Tammie	Lincoln, NE	Murphy, Timothy & Mary Louise	Lincoln, NE
Jacobson, Barbara	Lincoln, NE	Latimer, Janet	Lincoln, NE	Nelson, Jodi	Lincoln, NE
Janike, William & Nancy	Lincoln, NE	Lauerman, Jim & Margaret	Lincoln, NE	Nichols, Gene & Marilyn	Fairmont, NE
Jauken, Barbara	Lincoln, NE	Lawver, Dale	Friend, NE	Nimic, Dana	Lincoln, NE
Jedlicka, Rodney	Schuyler, NE	Lee, Janice	Lincoln, NE	Oglesby, Diana	Lincoln, NE
Johnson, Chad	Lincoln, NE	Leifert, Sally	Lincoln, NE	Oltman, Larry	Cortland, NE
Johnson, Dalton & Melo	Lincoln, NE	Lenhoff, Brooke	Lincoln, NE	Osborne, Mike	Olathe, KS
Johnson, Dayna	Lincoln, NE	Lentfer, Michael	Independence, MO	Ostergard, Audra	Lincoln, NE
		Lidmila, Michael	Loveland, CO		

Thank you, 2021-2022 Donors

Ostergard, Holly & Tonn	Lincoln, NE	Schwarz, Ray & Ruth	Lincoln, NE	Thomssen, Darrel	Kansas City, MO
Osterhoudt, Donna	Tecumseh, NE	Scott, Chad	Lincoln, NE	Tipton, Carolyn	Palmyra, NE
Osterthun, Stu & Stephanie	Roca, NE	Sedlacek, Pam	Lincoln, NE	Tolle, Scott & Shelly	Milford, NE
Owen, Robert	Port Orange, FL	Seim, Nancy & Dennis	Lincoln, NE	Townsend, Josh	Table Rock, NE
Pack, Mary	Lincoln, NE	Shafer, Roselyn	Beatrice, NE	Troyer, Melissa	Milford, NE
Pallas-Duncan, Susan	Lincoln, NE	Shald, Jerry	Milford, NE	Tvrdy, Paul	Milford, NE
Pearson, Ronald & Chris	Fremont, NE	Shaw, Scott & Marla	Lincoln, NE	Uhrmacher, Arlyn & Kathleen	Lincoln, NE
Pekarek, Jeff	Columbus, NE	Scheil, Renee	Lincoln, NE	Van Wagenen, Richard	Omaha, NE
Peterson, Erwina	Yakima, WA	Sherwood, James	Lincoln, NE	Vap, Gerald & Sherry	Lincoln, NE
Pitts, Michael & Jennifer	Zionsville, IN	Shores, Charles	Wymore, NE	Vavra, Duane	Columbus, NE
Pope, Doug	Lincoln, NE	Shortridge, Rick & Kim	Lincoln, NE	Virts, Dustin	Englewood, CO
Portsche, Robert	Arlington, VA/Lincoln, NE	Shortridge, Robby	Lincoln, NE	Vollenweider, Kent	Lincoln, NE
Portz, Debra & Mark	Lincoln, NE	Shortridge, Ronald & Mary	Bennet, NE	Vosta, Lisa	Raymond, NE
Powell, Elijah	La Vista, NE	Shortridge, Rosalie	Lincoln, NE	Wagner, Jim & Marlene	Lincoln, NE
Poyner, Eloise & Perry	Omaha, NE	Shreve, Donna	Tucson, AZ	Walburn, Jeffrey	Lincoln, NE
Prochaska, Frank	Linwood, NE	Siekman, Ray	Lincoln, NE	Walker, John	Cranbury, NJ
Pullman, Marcine & Richard	Hallam, NE	Sievert, Craig	Lincoln, NE	Wall, Orvis & Sheila	Lincoln, NE
Radil, Gary	Omaha, NE	Small, Bill & Kathy	Hutchinson, KS	Walla, Mark	Valparaiso, NE
Rainforth, David	Lincoln, NE	Smith, Duane	Beatrice, NE	Ward, Janeen	Lincoln, NE
Ravndal, Rob	Lincoln, NE	Smith, Ron & Peg	Lincoln, NE	Wasson, Ranee	Douglas, KS
Raybould, Pat	Lincoln, NE	Snodgrass, Lyda	Lincoln, NE	Waswick, Kimberly	Lincoln, NE
Rea, Lonald	Lincoln, NE	Snyder, James & Sally	Chagrin Falls, OH	Watermeier, Daniel & Jean Ann	Syracuse, NE
Reifschneider, Henry	Wentzville, MO	Snyder, Jennifer	Lincoln, NE	Watson, Alyce	Lincoln, NE
Renteria, Jon	Lincoln, NE	Soto, Jose	Lincoln, NE	Weber, Debba	Hastings, NE
Reynoldson, Robert & Cheryl	Lincoln, NE	Speedlin, John & Claire	Lincoln, NE	Webster, Theresa & Scott	Lincoln, NE
Riley, Stacy	Seward, NE	Spilker, Lee	Pickrell, NE	Wehrbein, Gerhart	Elkhorn, NE
Ringsmuth, John & Susan	Lincoln, NE	Sporven, Phyllis	Lincoln, NE	Weiss, Marlon & Cindi	Lincoln, NE
Robinson, Robby & Sue	Lincoln, NE	Stara, Dennis & Nancy	Lincoln, NE	Wessel, Pamela	Lincoln, NE
Rodgers, Mac & Pamela	Lincoln, NE	Stara, Loran	Lincoln, NE	Whitmer, Kristi & John	Lincoln, NE
Rood, Kenneth	Omaha, NE	Stauffer, Betty	Lincoln, NE	Wightman, Jill	Lincoln, NE
Ross, Phip	Lincoln, NE	Steffen, Carole	Lincoln, NE	Wiley, Bill	Milford, NE
Rost, Marci	Lincoln, NE	Stenberg, Neal & Janet	Lincoln, NE	Wilke, Brett & Lisa	Stanton, NE
Roth, Duane	Rio Rancho, NM	Stevens, Georgia	Lincoln, NE	Willey, Lynn	Lincoln, NE
Russell, Ivan & Elizabeth	Country Club, MO	Stewart, Mary	Irvine, CA	Williams, Eric	Lincoln, NE
Ryan, James	Blair, NE	Stich, Linda	Waverly, NE	Williams, Randall	Milford, NE
Saffer, Lynn	Lincoln, NE	Stofer, Kathryn	Hastings, NE	Williams, Steve	Lincoln, NE
Schall, Chad	Broken Bow, NE	Stoupa, Paul	Omaha, NE	Willman, Patrick	Winter Park, CO
Schenk, Susan	Lincoln, NE	Stoural, Tammi	Battle Creek, NE	Wilson, Warren	Lincoln, NE
Schluckebier, Lynn	Seward, NE	Stutzman, Jolene	Lincoln, NE	Wittstruck, Courtney	Lincoln, NE
Schneckloth, Trudy	Mesa, AZ	Sutton, Donna	Lincoln, NE	Wollberg, Julie	Lincoln, NE
Schneider, Kevin & Tricia	Raymond, NE	Swanson, Marcia	Lincoln, NE	Wunderlich, Kay	Roca, NE
Schnieder, Renee	Davey, NE	Swanson, Terri	Lincoln, NE	Wurdeman, Richard & Jolene	Bennington, NE
Schoenbeck, Gregg	Lincoln, NE	Taubenheim, Jeremy & Sarah	Riverdale, NE	Yoakum, Christa	Lincoln, NE
Schroeter, Oscar & Kay	Chandler, AZ	Taylor, Kirby	Milford, NE	Zabel, Dennis	Daykin, NE
Schultz, Jack & Kathy	Lincoln, NE	Teetor, Eugene	Amarillo, TX	Zetocha, Robert	Lincoln, NE
Schultze, Rex & Sharla	Mesa, AZ	Theilen, David	Overland Park, KS	Zimmer, Richard & Deanna	Lincoln, NE
Schuster, Jo	Lincoln, NE	Thompson, Ian	Lincoln, NE		
Schwab, Ron & Beverly	Fairbury, NE	Thompson, Stephanie	Columbia, MO		
Schwartzkopf, Steven	Lincoln, NE	Thomsen, Cynthia	Fairmont, NE		

Southeast Community College Educational Foundation Community Partners

We are grateful to our Community and Industry Partners who have supported the SCC Educational Foundation and/or Southeast Community College between July 1, 2021, and June 30, 2022, made via general donations, matching gifts, grants, the Annual Pathway to Possible Fund and events. Thank you!

3M Company	St. Paul, MN	Grace S. Pfister Foundation Trust	Lincoln, NE	NorthWestern Energy	Butte, MT
4G Steel Fabrication	Lincoln, NE	GSK Consumer Healthcare	Lincoln, NE	NPPD Community College Scholarship Fund	Columbus, NE
Abel Foundation	Lincoln, NE	Hampton Family Foundation	Lincoln, NE	Pawnee City School Foundation	Pawnee City, NE
Acklie Charitable Foundation	Lincoln, NE	Harley's Heating & Air Conditioning, Inc	Lincoln, NE	Perry, Guthery, Haase & Gessford P.C., LLO	Lincoln, NE
Ameritas Life Insurance Corp.	Lincoln, NE	Hughes Brothers Inc.	Seward, NE	Peter Kiewit Foundation	Omaha, NE
Ashland-Greenwood Public Schools Foundation	Ashland, NE	Industrial Maid, LLC	Cortland, NE	Physical Therapy Assistant Student Organization	Lincoln, NE
Black & Veatch Corporation	Overland Park, KS	J. A. Woollam Foundation	Lincoln, NE	Pretzer Family via Nebraska Community Foundation	Lincoln, NE
Black Hills Energy	Lincoln, NE	John Deere Ag Marketing Center	Olathe, KS	Professional Surveyors Association of Nebraska	Lincoln, NE
Brandt, Horan, Hallstrom & Stilmock	Syracuse, NE	John Deere Construction & Forestry	Davenport, IA	Radcliffe Gilbertson & Brady	Lincoln, NE
C.W. Longinaker Family Trust (Jay Longinaker)	Randolph, IA	John Henry's Plumbing, Heating & Air Conditioning	Lincoln, NE	Redshaw Paint Supply, Inc.	Omaha, NE
CCSO (College & Community Service Organization)	Milford, NE	Johnny Baxter Carriage House Foundation	Lincoln, NE	Ridder Hereford Ranch	Callaway, NE
Celerion	Lincoln, NE	Johnson County Central Public Schools	Tecumseh, NE	Sandhills Global, Inc	Lincoln, NE
Certified Transmission	Omaha, NE	Johnson-Brock Public Schools Foundation	Johnson, NE	SE Nebraska Land Surveyors Association	Lincoln, NE
Chevrolet Class Club of Omaha & Council Bluffs (George Kralik)	Omaha, NE	Karl H. and Wealtha H. Nelson Family Foundation	Nebraska City, NE	Security First Bank	Lincoln, NE
Children's Hospital	Omaha, NE	Lancaster County Farm Bureau	Waverly, NE	Seiler Geospatial	Omaha, NE
Coffin Foundation	Beatrice, NE	Lancaster County Treasurer's Office Staff	Lincoln, NE	Seward Motor Freight, Inc.	Seward, NE
Cornerstone Bank	York, NE	Lewis L. Lawson Fund via Indian River Community Foundation	Vero Beach, FL	Silver Ridge Condominium Association	Lincoln, NE
Cornhusker Bank	Lincoln, NE	Lincoln Community Foundation	Lincoln, NE	SourceOne	Lincoln, NE
Cornhusker Corvette Club LTD	Boys Town, NE	Lincoln Home Builders Care Foundation	Lincoln, NE	Southeast Community College	Lincoln, NE
D A Davidson Trust Company	Medford, OR	Mark T. and Margaret L. Seacrest Family Charitable Foundation	Lincoln, NE	Sowers Club of Nebraska Foundation	Lincoln, NE
Dana F. Cole & Company, LLP	Lincoln, NE	Matters On Tomorrow	Lincoln, NE	SP Group P.C.	Lincoln, NE
Davis Design Inc.	Lincoln, NE	MetalQuest Unlimited, Inc.	Hebron, NE	St. Thomas Episcopal Church	Falls City, NE
Dennis Hutsell Living Trust	Parker, CO	Midwest Early Corvette Club	Elkhorn, NE	State Bank of Odell	Odell, NE
E.A. Kral Estate	Lincoln, NE	Molex, Inc. (Koch Industries)	Lincoln, NE	State Farm Companies Foundation	Bloomington, IL
EducationQuest Foundation, Inc.	Lincoln, NE	Nebraska Advanced Nuclear Forum	Milford, NE	Thayer County Bank	Hebron, NE
Edward and Lida Robinson Charitable Trust	Omaha, NE	Nebraska Association of County Treasurers	Lincoln, NE	Topil Enterprise Farm & Electronics	Rising City, NE
Eustis Body Shop	Eustis, NE	Nebraska Military Retiree Council	Lincoln, NE	Truck Center Companies	Omaha, NE
Exmark Manufacturing Company, Inc	Beatrice, NE	Nebraska Section - AWWA	Omaha, NE	Union Bank & Trust Co.	Lincoln, NE
Farm Credit Services of America	Omaha, NE	Nebraska Water Environment Association	Valparaiso, NE	University of Nebraska Foundation	Lincoln, NE
Farmers & Merchants Bank	Milford, NE	Nedelco	Aurora, NE	Wahoo Public Schools Foundation	Wahoo, NE
Farmers & Merchants Investment, Inc.	Lincoln, NE	NMC Cat	Omaha, NE	Wake Charitable Foundation	Seward, NE
First Interstate Bank	Billings, MT	Normil Foundation (Duane & Betty Starr)	Lincoln, NE	Weeping Water Public School Foundation	Weeping Water, NE
Frontier Bank	Falls City, NE			Woods Aitken LLP	Lincoln, NE
Fulton Construction	Lincoln, NE				
Gene Haas Foundation	Oxnard, CA				
Geneva Welding & Supply, Inc.	Geneva, NE				

Scholarship Spotlight: Eustis Body Shop – Dave Berke Memorial Scholarship



A new scholarship in memory of Dave Berke, a 1980 Auto Body Repair graduate from SCC's Milford Campus, has been created that will give lasting support to SCC students enrolled in the Auto Collision Repair Technology program.

From a very young age, Berke had a passion for cars and the auto industry. After graduating from Lexington High School in 1978, he attended SCC's Milford Campus and enrolled in the Auto Body Repair program. After graduating in 1980, he worked a few different jobs before becoming the second employee at Eustis Body Shop alongside longtime business partner, Doug Keller. He believed in EBS so much that in the early years he would delay cashing his paychecks to help the company with cash flow. He was a body and paint technician, shareholder, vice president and manager of the Lexington location for more than 30 years. Most recently, he served as the western regional manager, overseeing the Kearney, Lexington, Cozad, and Eustis locations.

When EBS had an opportunity to expand into Lexington, Berke took the challenge head-on and created a successful operation, building a new facility just a couple years after starting in a rented shop. Eustis Body Shop is now located in Eustis, Lexington, Cozad,

Kearney, Grand Island and Lincoln.

In June of 2021, Berke was diagnosed with a rare and aggressive form of pancreatic cancer that metastasized to his spine. Since his cancer was rare, the prognosis was uncertain. That didn't matter to him, he remained laser-focused on beating the cancer and getting back to the shop, his family and his life. Dave began chemotherapy treatments, and after five months, his pancreas numbers nearly normalized and his bone tissue was repairing itself.

That fall, Berke was able to go back to work, live independently, celebrate the holidays, spend time with family and friends and enjoy his life to the fullest for two months. In December, the cancer had spread to his brain and he died Jan. 7, 2022, after a courageous journey.

Dave earned himself Eustis Body Shop's 40 Year Award in December before his passing. His job at the shop was his purpose and passion. Even during chemo treatments, his main goal was to feel well enough to go back to work. He cared deeply for his customers, co-workers and vendors.

Berke also served on the Lexington Volunteer Fire Department for more than

30 years, where he was a mentor to many of the younger firemen.

Dave also enjoyed spending time with his children and grandchildren, firing off his private firework display at Johnson Lake over the Fourth of July, fishing, and going for boat floats around the lake. He will always be remembered for his big smile, lots of laughs, and great stories.

He lived his life with service to his customers, his community, his job, and his family. Dave's children, Sarah, Ted, and Madison, together with Doug Keller from Eustis Body Shop, wanted to keep Dave's passion for the auto industry alive by helping students with their education to follow the same path.

Those who support the new scholarship will honor Berke's memory, while giving lasting support to SCC students enrolled in the Auto Collision Repair Technology Program.

To learn more about this scholarship or establish a new annual or endowed fund, contact the Foundation Office at 402-323-3411.

Lincoln Student Academic Support Renovation

The renovation and addition of the Student Academic Support addition on the Lincoln Campus is scheduled to be completed at the end of February 2023. While the project addresses the vital needs of fire and life safety updates, it also modernizes, expands and organizes support spaces to improve access for students. Departments impacted by this renovation and addition include an Academic Support Center, Advising Center, Adult Education, Virtual Learning, Information Technology, Library, Safety/Security/Campus Office, Student Accounts, Student Activities Center, Student Enrollment Services, Student Success Center, Testing Center, and Veteran's Center.





Learn to Dream Update



The Learn to Dream Scholarship is now in its 15th year at Southeast Community College. This scholarship is generously funded by Union Bank & Trust, Nelnet and the Acklie Charitable Foundation and pays for tuition and fees up to 60 semester credit hours. In the 2021-2022 academic year, SCC had 1,210 scholarship recipients enrolled in at least one class. In partnership with Lincoln Public Schools, SCC is looking forward to inviting current high school students who qualify for the scholarship to campus for tours, Q & A sessions and fun. In order to apply, students must qualify for the free lunch program at LPS.

From Chelsea Koehn, Southeast Community College Advisor:

“The Learn to Dream Scholarship helped open the door to several opportunities. After I graduated from SCC, I was able to secure my first full-time professional job. I was able to later on complete my bachelor’s degree from Doane University, and I am now working on my master’s degree. I also currently have two younger sisters who are utilizing the Learn to Dream Scholarship.”

Looking back now so many years after being a Learn to Dream scholar, I am confident that the LTD Scholarship completely changed the trajectory of my life and elevated me that much closer to achieving my goals. I deeply understand the value and impact this scholarship holds, and I will always be so grateful for it.”

Learn to Dream Scholarship Data Summary 2021-2022

Enrolled cohorts are based on the academic year in which Learn to Dream-Lincoln (LTD) students enrolled in their first non-dual-credit term at SCC:

Lifetime Number of Awards	Number of Awards in 2021-2022	Lifetime Number Enrolled	Number Enrolled in 2021-2022	Number Enrolled for the First Time in 2021-2022
7,613	594	5,757	1,210	396
2021-2022 awardees enrolled		Enrolled for the first time in 2021-2022		
Enrolled Not Enrolled		Enrolled Dual Credit		
405 68 %		171 43 %		225 57 %

Haas Foundation Donates Money to SCC’s Precision Machining program

Southeast Community College’s Precision Machining and Automation Technology program recently received a \$15,000 donation from the Gene Haas Foundation. The money will be used for scholarships and for students to enter and travel to skills competitions such as SkillsUSA.

“The generosity of Gene Haas and his foundation is very much appreciated,” said Kirby Taylor, program chair. “This helps offset the financial burden of school. The No. 1 priority should be learning, not figuring out how to pay for it.”

The Gene Haas Foundation was formed to fund the needs of communities around the California area. It has since expanded to prepare students with a career in manufacturing. Haas is the owner of Haas Automation Inc., America’s leading builder of Computer Numeric Control machines, which he started in 1983. Haas also owns multiple NASCAR teams.



“Your contribution to my education is so generous and will allow me to continue to focus on my studies so that I will be able to receive my Business degree this year. I will now be able to reach my goal of becoming a real estate agent thanks to you.”
 – McKenna Bailiff



The mission of the Southeast Community College Educational Foundation is to support the vitality and growth of SCC and to benefit the students, staff and communities it serves through the development and wise use of financial resources.

2021-2022 Foundation Board



Ben Kiser,
President
Nelnet
Lincoln, NE



Doris Robertson
Vice President
Union Bank & Trust
Lincoln, NE



Holly Ostergard
Secretary
Board of Directors,
Crete Carrier
Lincoln, NE



Jack Huck
Southeast
Community
College
Foundation
Lincoln, NE



Michael Casey
First National
Bank
Johnson, NE



Jay Dunlap,
Union Bank & Trust
Lincoln, NE



Dan Muhleisen
D & M
Development,
L.L.C.
Lincoln, NE

Michelle Birkel
Executive Director
mbirkel@southeast.edu
402-323-3411

Amy Jorgens
Treasurer
Southeast Community College,
Vice President of
Administrative Services

Paul Illich
SCC President

SCC Locations

Beatrice Campus

4771 W. Scott Road
Beatrice, NE 68310-7042
402-228-3468 | 800-233-5027

Lincoln Campus

8800 O St.
Lincoln, NE 68520-1299
402-471-3333 | 800-642-4075

Milford Campus

600 State St.
Milford, NE 68405-8498
402-761-2131 | 800-933-7223

Education Square (ESQ)

1111 O St., Suite 112
Lincoln, NE 68508-3614
402-323-3441 | 800-642-4075

Jack J. Huck Continuing Education Center

301 S. 68th St. Place
Lincoln, NE 68510-2449
402-437-2700 | 800-828-0072

SCC-Area Office
301 S. 68th St. Place, 5th floor
Lincoln, NE 68510-2449
402-323-3400 | 800-642-4075

Deaf TDD: 402-437-2702 | southeast.edu

Learning Center at Falls City

3200 Bill Schock Blvd.
Falls City, NE 68355-2420
402-323-3396 | 800-828-0072
southeast.edu/FallsCityLC

Learning Center at Hebron

610 Jefferson Ave.
Hebron, NE 68370-1942
402-323-5591 | 800-828-0072
southeast.edu/HebronLC

Learning Center at Nebraska City

1406 Central Ave.
Nebraska City, NE 68410-2224
402-323-3636 | 800-828-0072
southeast.edu/NebraskaCityLC

Learning Center at Plattsmouth

537 Main St.
Plattsmouth, NE 68048-1963
402-437-2298 | 800-828-0072
southeast.edu/PlattsmouthLC

Learning Center at Wahoo

536 N. Broadway St.
Wahoo, NE 68066-1653
402-323-5581 | 800-828-0072
southeast.edu/WahooLC

Learning Center at York

401 N. Lincoln Ave.
York, NE 68467-3571
402-323-3635 | 800-828-0072
southeast.edu/YorkLC

Southeast Community College Educational Foundation is a 501(c)3 not-for-profit corporation operated for charitable, scientific and educational purposes in support of Southeast Community College.

Southeast Community College Educational Foundation
301 S. 68th St. Place, Lincoln, NE 68510-2449 | 402-323-3411

southeast.edu/educationalfoundation