

SENCAP

SOUTHEAST NEBRASKA CAREER ACADEMY PARTNERSHIPS

2011-2012
CAREER ACADEMY
INFORMATION GUIDE

PARTNERSHIPS = OPPORTUNITIES

CC *South*
east
community college

www.southeast.edu

Participating School Districts

Ashland-Greenwood
Beatrice
Bruning-Davenport
Cedar Bluffs
Centennial
Crete
Deshler
Diller-Odell
Dorchester
Exeter-Milligan
Fairbury
Fillmore Central
Freeman
Friend
Heartland
Malcolm
McCool Junction
Mead
Meridian
Milford
Norris
Raymond Central
Seward
Shickley
Southern
Thayer Central
Tri County
Wahoo
Waverly
Wilber-Clatonia
York

SENCAP Offices

ESU 5 Area:
(402) 323-3429
800-828-0072 ext. 3429
ESU 2 and 6 Areas:
(402) 761-3341



TABLE OF CONTENTS

1 Welcome
A brief statement about Southeast Community College's Career Academies

2 Frequently Asked Questions

3-4 General Information

5-18 Career Academy Information

5 Agriculture Career Academy
Course Sequence, Transfer Information, Course Descriptions

6 Business, Marketing and Management Career Academy
Course Sequence, Transfer Information

7 Business, Marketing and Management Career Academy
Course Descriptions

8 Education Career Academy
Course Sequence, Transfer Information, Course Descriptions

9 Education Career Academy
Course Descriptions

10 Health Sciences Career Academy
Course Sequence, Transfer Information

10 Nursing Assistant Career Academy
Course Sequence

11 Health Sciences Career Academy
Course Descriptions

12 Industrial, Manufacturing & Engineering Systems Career Academy
Course Sequence, Course Descriptions

12 Prerequisites for SCC Information Technology Career Academy Courses

13 Information Technology Career Academy
Course Sequence, Transfer Information

14 Information Technology Career Academy
Course Descriptions



15 Welding Career Academy
Course Sequence, Course Descriptions

16-19 Career Academy Application Form
Student/Parent Information, School Contact Information, Student Essay, Honor Statement/FERPA Agreement (must be signed)

19 Teacher/Counselor Recommendation Form (place in sealed envelope)
High school transcripts (unofficial)

20 SENCAP Contact Information
There are several ways to contact us



Note: The Career Clusters icons are being used with permission of the States' Career Clusters Initiative, 2010 - www.careerclusters.org

Welcome to Southeast Community College's Career Academies

Are you interested in exploring a career field and earning college credit while still in high school? If so, a career academy is an excellent option to consider.

In your career academy, you will . . .

- Take college-level courses
- Get a head start on your degree
- Visit various worksites
- Job-shadow different career areas
- Learn skills that will help you be successful

You will have the opportunity to meet and interact with other students, college instructors, businessmen and women, and/or a wide variety of health care providers from the three-county region and beyond.

The Southeast Nebraska Career Academy Partnerships are between Southeast Community College, ESU 2, 3, 5, and 6, area school districts, health care providers, and business and industry in nine counties in southeast

Nebraska.

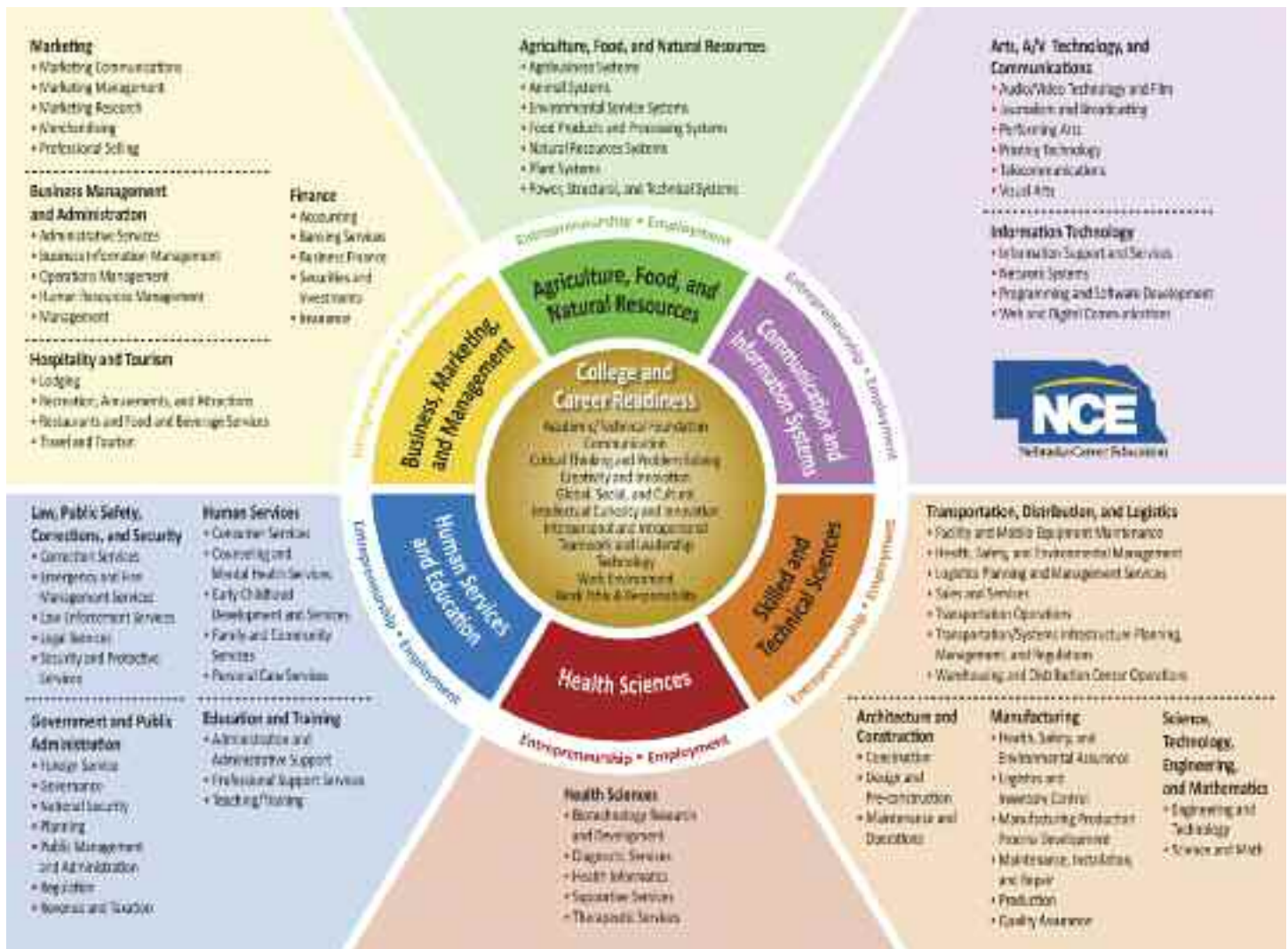
Career Academies provide opportunities for all high school juniors and seniors to be college- and career-ready for 21st-century high-wage, high-skill, and high-growth occupational areas.

Career Academies provide . . .

- Real-World Learning Experiences
- Dual Credit Classes (college and high school credit)
- Participation in Student Organizations
- Comprehensive Programs of Study

Southeast Community College's Career Academies support the Nebraska Department of Education's Career Education Model. For more information on careers in Nebraska, go to www.nebraskacareerconnections.org.

Thank you for considering a Career Academy!



FREQUENTLY ASKED QUESTIONS

WHAT is a Career Academy?

It is an opportunity for students to be both college- and career-ready. This means that . . .

High school juniors and seniors will take college classes while in high school, classes that are “dual credit,” meaning they will count toward high school graduation and college credit. Students will explore a career field and get a first-hand look at what goes on in the “real world.” Students will conduct tours and job shadows, hear speakers and experience other career exploration activities, many of them in their own communities.

WHAT academies will be offered?

In fall 2011, the following Career Academies will be offered: Agriculture; Business, Marketing and Management; Education; Health Sciences; Industrial Manufacturing & Engineering; Information Technology; Nursing Assistant; and Welding. **Note: Not all Career Academies will be offered in all areas. Please check with your counselor to see if the Academy in which you are interested is being offered in your area.**

WHAT will it cost me?

Southeast Community College tuition and fees are \$49 per quarter credit hour (2010-2011 school year). Check with your school counselor or administrator regarding possible tuition assistance. Textbooks for academy classes will be the responsibility of the student.

WHAT classes will I take?

Each semester, students will take at least one career academy class. Each high school will have a complete listing of classes and course descriptions.

WHERE/WHEN will I take classes?

Classes will be offered in a variety of ways. Some may be face-to-face at a central location. Some may be in a student’s own school, either face-to-face, through distance learning or an online class. Career Academy classes will be offered during the regular school day. They will be scheduled like normal high school classes.

WILL these classes transfer?

Almost all of the courses will count toward a degree at Southeast Community College, and many of them will transfer to a four-year institution.

HOW will I register?

Students will complete an Academy application, which may or may not include an essay, and register through their local school’s spring registration process. School counselors will assist students in registering for academy classes. Check with your counselor to see if an essay is required.

WHERE will I learn more about jobs and the career in which I am interested?

As part of the academy experience, part of the time will be spent “on-site” at a local business or health care provider. These activities will be coordinated by the school district and the career academy office.

WHY should I consider a Career Academy?

Career Academy programs are geared to prepare students for high-wage and high-demand careers. In order to compete for jobs in today’s world, students will need to be both college- and career-ready. An academy will combine rigorous classes with relevant experiences that will make that possible.

General Information

Eligibility Requirements

- Must be a high school junior or senior when Academy classes start.
- Must be at least 16 years old.
- Must have transportation to and from classes and the work-based learning experiences.
- Must complete an application, including a student and a parent essay, and be selected.

Curriculum

Specific courses are determined by SCC faculty, secondary school officials and business partners. Based on classes taken, students may complete between 5-20 credit hours of college-level coursework per year.

Calendar

Students are expected to abide by the Career Academy calendar. (If class is not in session at the high school, students are still expected to attend SCC classes.)

Course Capacity

Course capacities range from eight to 25 students per class. Space may be limited due to the number of workstations, room size and equipment available.

Registration

Students will begin registering for academy classes at their local high school during the school's normal registration process. Students selected for the Career Academy will receive an acceptance letter and information about registration and payment procedures.

College and High School Credit

Southeast Community College credit is granted for the college courses students take in the Career Academy. Each high school/district determines whether high school credit also is awarded for the Career Academy course work. For information about transferring course credit to other higher education institutions (such as four-year colleges), it is best to contact the institution that will be receiving the credit. For local area transfer agreements, please go to www.southeast.edu, click on Programs of Study, Transferring Credits, then Transfer Guides.

Grades

Grades for each college course are derived using the criteria identified in the course syllabus developed by the faculty. Students receive a course syllabus at the beginning of each class. Grades for the high school credit portion of the class will be the responsibility of the home school district.

FERPA

Signature of both the Student and the Parent are required on the Application if the student is under 18 years of age. Student information such as academic progress and attendance may be released to the student's parent(s)/guardian(s) and to the high school (see Page 18 for complete Family Educational Rights and Privacy Act statement). **NOTE:** Students under the age of 18 who submit a form without parent/guardian signature will NOT be registered.

Inclement Weather

If SCC is closed, Career Academy classes and activities will be cancelled. If your school district is closed, you DO NOT have to attend academy classes or activities for that day. Check the Southeast Community College Web site (www.southeast.edu) or call the Career Academy office (800-828-0072, ext. 3429) or (402) 640-9226 for cancellation updates.

Instructor Absences

In the event of an instructor's absence, SCC will attempt to hire a substitute instructor. If a substitute instructor is not available, then class will be cancelled. An attempt will be made to notify each individual student, either through the school or home, advising of the class cancellation.

Work-Based Learning Component

A key part of the Career Academy program will be work-based learning experiences. The Career Academy Office will establish contacts in the business community, and will help to set up job shadowing experiences, tours, field trips, speakers, and Big Event Days (special programs held once a semester).

Students will complete a portfolio of their work-based learning experiences. This will be graded and will include summaries of the experiences as well as resumes, assignments and career and college research activities. Students in the Career Academy program are required to complete the career research activities and the career portfolio in order to receive high school credit.

Student Responsibilities

Attendance - Class attendance is taken. All absences or tardies are reported to the student's home school. Class attendance is mandatory.

Confidentiality - A level of privacy exists in each career field. What students see in a place of business or health care facility should remain confidential. HIPAA regulations in local hospitals and other health care providers will be strictly enforced.

Dress Code - Students must follow the dress code as stated by the instructor as well as what is dictated by professional safety standards. Individual classes and/or business sites may have dress codes by which students must abide.

Transportation - Transportation to the appropriate SCC campus/center and/or internship/apprenticeship site is the responsibility of either the student or the local school district.

To Apply - An application is available in the back of this guide or from your high school guidance counselor. Please submit the application to your high school counselor.

Application Deadline: March 25, 2011

Questions - If you have questions about SCC's Career Academy, please contact your high school guidance counselor.

Agriculture Career Academy Course Sequence

Year One:

Semester 1: AGRI 1000 Intro to Agriculture and Horticulture Technologies (4.5 credits)



Semester 2: AGRI 1257 Live Animal Selection & Carcass Evaluation (4.5 credits)

Year Two:

Semester 1: AGRI 1131 Crop & Food Science (4.5 credits)

NOTE:
Check with your counselor to see if this Academy is available in your area.

Semester 2: AGRI 1123 Agribusiness Careers (4.5 credits)

Agriculture Career Academy Transfer Information

SCC Academy Course	UNL Course	Transfers to these UNL Colleges	Tuition Savings
AGRI 1123 Agribusiness Careers (4.5 cr.)	AGRO 201 Prep Agron Career (1 cr.) and GNCR*** (2 cr.)	College of Agriculture (Note: GNCR means the course transfers as UNL general hours)	\$216-\$561
AGRI 1131 Crop & Food Science (4.5 cr.)	AGRO 131 Plant Science (3 cr.)	College of Agriculture	\$216-\$561
AGRI 1257 Live Animal Selection & Carcass Eval. (4.5 cr.)	ASCI 200 Animal & Carcass Evaluation (3 cr.)	College of Agriculture	\$216-\$561

Agriculture Career Academy Course Descriptions

AGRI 1000 - Introduction to Agriculture and Horticulture Technologies (4.5 credits) The purpose of this class is to introduce students to the fundamental skills and knowledge base necessary to succeed in the Crops, Livestock, Horticulture and Business sectors of the agriculture industry.

AGRI 1123 - Agribusiness Careers (4.5 credits)

Overviews of occupations in the field of agribusiness. In-depth exploration of several broad occupational areas and personal interview of at least two agribusiness management level employers.

AGRI 1131 - Crop & Food Science (4.5 credits)

Principles and practices of production of the major agronomic crops of the high plains.

AGRI 1257 - Live Animal Selection & Carcass Evaluation (4.5 credits)

Methods of selection and evaluation of live animals and carcasses. Training in selection of replacement breeding animals of economic importance. Purchasing slaughter animals and carcasses for primal cuts within the meat industry.

Business, Marketing and Management Career Academy Course Sequence

Year One:

Semester 1: BSAD 1050 Introduction to Business
(4.5 credits)

Semester 2: ENTR 1050 Introduction to Entrepreneurship
(4.5 credits)



Year Two:

Semester 1: ACCT 1200 Principles of Accounting (4.5 credits)
OR
BSAD 2520 Principles of Marketing (4.5 credits)

Semester 2: BSAD 2540 Principles of Management (4.5 credits)

NOTE:
Check with your counselor
to see if this Academy
is available in your area.

Business, Marketing and Management Career Academy Transfer Information

SCC Academy Course	UNL Course	Transfers to these UNL Colleges	Tuition Savings
BSAD 1050 Intro. to Business (4.5 cr.)	100 Level Business Elective	College of Business	\$216-\$561
BSAD 2520 Principles of Marketing (4.5 cr.)	MRKT 341 Marketing	College of Business	\$216-\$561
BSAD 2540 Principles of Management (4.5 cr.)	MNGT 320 Principles of Management	Agricultural Sciences (Animal Science), Business, Education, Engineering (General Business Minor)	\$216-\$561
ACCT 1200 Principles of Accounting I (4.5 cr.)	ACCT 201 Introductory Accounting I	Agricultural Sciences (including Agribusiness, Ag Economics, Agronomy, Animal Science), Business, Education, Engineering (General Business Minor)	\$216-\$561
ENTR 1050 Introduction to Entrepreneurship (4.5 cr.)	ENTR 121 Introduction to Entrepreneurial Management	College of Business	\$216-\$561

Business, Marketing and Management Career Academy Course Descriptions

ACCT 1200 - Principles of Accounting I (4.5 credits)

Prerequisite: Accounting competency recommended. Example: One year of high school accounting. This course is designed to provide introductory knowledge of accounting principles, concepts and practices. Included topics are the balance sheet, the income statement, the statement of owner's equity, the statement of cash flows, worksheets, journals, ledgers, accruals, adjusting and closing entries, internal controls, inventories, fixed and intangible assets, liabilities, equity, and financial statement analysis. This course provides a foundation for more advanced work in the fields of accounting and business.

BSAD 1050 - Introduction to Business (4.5 credits)

An introductory study and overview of the role of business in society as well as a discussion of the various disciplines of business, including an overview of business organization, management, marketing, human resource management, and finance. Also, a study and discussion of various strategies for success of specific public and private firms as well as small business. Business vocabulary used to understand and interpret business news and information.

BSAD 2520 - Principles of Marketing (4.5 credits)

A study of the development of an effective marketing program, including consumer behavior, product, pricing, distribution, and promotional strategies.

BSAD 2540 - Principles of Management (4.5 credits)

Introduction to management theory and practice for supervisors of employees or managers of organizations. Functions of planning, organizing, directing, controlling and supervising. New and rapidly developing areas of management.

ENTR 1050 - Introduction to Entrepreneurship (4.5 credits)

The student will evaluate the business skills and commitment necessary to successfully operate an entrepreneurial venture and review the challenges and rewards of entrepreneurship. The student will understand the role of entrepreneurial businesses in the United States and the impact on our national and global economy.



Education Career Academy Course Sequence

Year One:

Semester 1: EDUC 1310 Introduction to Education (4.5 credits)
 OR
 ECED 1150 Introduction to Early Childhood Education (4.5 credits) - ONLINE

Semester 2: SOCI 1010 Introduction to Sociology (4.5 credits)

Year Two:

Semester 1: PSYC 2960 Life-Span Human Development (4.5 credits)

Semester 2: EDUC 2590 Instructional Technology (4.5 credits)
 OR
 ECED 1120 Preschool Child Development (4.5 credits)



NOTE:
 Check with your counselor to see if this Academy is available in your area.

Education Career Academy Transfer Information

SCC Academy Course	Four-Year Institutions
EDUC 1310 Introduction to Education	College of St. Mary, Concordia University, Doane College, Midland University, Peru State College, University of Nebraska-Kearney, University of Nebraska-Lincoln (elective), Wayne State College (& EDUC 1080)
EDUC 2590 Instructional Technology	Doane College, University of Nebraska-Kearney, University of Nebraska-Lincoln
ECED 1150 Introduction to Early Childhood Education (online only)	Chadron State College (elective), College of St. Mary, Midland University, University of Nebraska-Kearney, University of Nebraska-Lincoln, Peru State College
ECED 1120 & ECED 1240	University of Nebraska-Lincoln (CYAF 271 and 271L), Chadron State College (w/ECED 1230), Peru State College (elective)
PSYC 2960 Life-Span Human Development	University of Nebraska-Lincoln: PSYC Developmental Psychology (3.0 cr.)
SOCI 1010 Introduction to Sociology	Transferable course to most four-year institutions

Education Career Academy Course Descriptions

EDUC 1310 - Introduction to Education (4.5 credits)

Overview of the foundations and the future of the field of education. Encourages critical thought regarding the role of education in society, the role of the teacher and educational practices in schools.

EDUC 2590 - Instructional Technology (4.5 credits)

Prerequisite: EDUC1310

Introduction to the approaches, methods, and procedures for meaningful incorporation of computers, media, and other technologies into teaching and learning in the K-12 classroom.

Education Career Academy Course Descriptions

ECED 1120 - Preschool Child Development (3.0 credits)

This course focuses on typical/atypical development of the child ages 3 through 5 years, in the domains of physical growth and motor skills, cognition and language, and social/emotional development. Grade of "C" or higher required for ECED2065 (Child Care Head Teacher Practicum). (This course required for Early Childhood degree at SCC.)

ECED 1150 - Introduction to Early Childhood Education (4.5 credits)

An overview of early childhood education. History, trends, the philosophies of various programs, diversity, inclusion, licensing standards, current legislation, professionalism, and advocacy are examined. (This course required for Early Childhood Degree at SCC.)

SOCI 1010 - Introduction to Sociology (4.5 credits)

Introduction to the basic principles of sociology, including the study of culture, socialization, social structure, social institutions, investigative behavior, deviance, inequalities, and theoretical perspectives.

PSYC 2960 - Life-Span Human Development (4.5 credits)

Prerequisite: PSYC1810 or SOCI1010

Integration of the basic concepts and principles of physical, cognitive and psychosocial development at each major stage of life. Provides an essential background for students in psychology, nursing, education, social welfare, and home economics; for workers in community service; and for parents and prospective parents.



Health Sciences Career Academy Course Sequence

Year One:

Semester 1: NONCR Introduction to Health Careers
AND
MEDA 1101 Medical Terminology I (2.0 credits)

Semester 2: SOCI 1010 Introduction to Sociology (4.5 credits)

Year Two:

Semester 1: PSYC 2960 Life-Span Human Development
(4.5 credits)

Semester 2: FSDT 1350 Basic Nutrition (4.5 credits)



NOTE:
Check with your counselor
to see if this Academy
is available in your area.

Nursing Assistant Career Academy Course Sequence

Year One:

Semester 1: NURA 1401 Nursing Assistant (6.5 credits)

Semester 2: SOCI 1010 Introduction to Sociology (4.5 credits)

Year Two:

Semester 1: BIOS 1210 Human Anatomy & Physiology I (6.0 credits)

Semester 2: BIOS 1220 Human Anatomy & Physiology II (6.0 credits)
OR

Year Two:

Semester 1: PSYC 2960 Life-Span Human Development (4.5 credits)

Semester 2: FSDT 1350 Basic Nutrition (4.5 credits)

Health Sciences Career Academy Transfer Information

SCC Academy Course	UNL Course	Transfers to these UNL Colleges	Tuition Savings
BIOS 1210 Human Anatomy & Physiology I	Note: This class is a 6.0-credit class at SCC.	BIOS***(4 credits) Note: Meets UNL College of Nursing and College of Public Affairs (Criminal Justice) requirement for science	\$178-\$719
BIOS 1220 Human Anatomy & Physiology II	Note: This class is a 6.0-credit class at SCC.	BIOS***(4 credits) Note: Meets UNL College of Nursing and College of Public Affairs (Criminal Justice) requirement for science	\$178-\$719
FSDT 1350 Basic Nutrition (4.5 credits)	FSDT 131 Science of Food (3.0 cr.)	Note: This class fulfills Essential Studies (ES) requirements at UNL	\$540
SOCI 1010 Introduction to Sociology	SOCI 101 Introduction to Sociology (3.0 cr.)	Note: This class transfers to most four-year institutions	Varies
MEDA 1101 Medical Terminology I	MEDA 1201 Medical Terminology II	CLAS 116 (2 credits), Scientific Greek & Latin, GNCR*** (course transfers as UNL general hours). Note: Must take Medical Terminology I AND Medical Terminology II	\$119.50- \$359.50

Health Sciences Career Academy Course Descriptions

NONCR - Introduction to Health Careers

This class will be offered for high school credit only. The purpose of the class is to introduce students to the broad range of career opportunities in the health care field.

BIOS1210 - Human Anatomy & Physiology I (6.0 credits)

Introduction to anatomy and physiology for students in biological, medical and health-related programs. Relationships between structure and function. Chemical, cellular and tissue levels of organization. Introduction to principle systems of the human body. Structure and function of the integumentary skeletal, muscular and nervous systems of the body. Important physiology experiments and structural identification experiments.

BIOS1220 - Human Anatomy & Physiology II (6.0 credits)

Prerequisite: BIOS1210

Continuation of the study of BIOS1210. Relationships between structure and function. Detailed study of the major systems of the human body, including cardiovascular, respiratory, digestive, urinary, reproductive, endocrine, and lymphatic. Special senses, immunity, fluid, electrolyte and acid-base dynamics. Important physiology experiments and structural identification experiments.

FSDT1350 - Basic Nutrition (4.5 credits)

The study of nutrients, digestion, absorption, metabolism, fitness, consumer concerns, food safety, nutrition throughout the life cycle, including cultural influences on food selection. The relation of nutrition to disease is explored.

MEDA1101 - Medical Terminology I (2.0 credits)

Introduction to medical terms. System for building a basic structure of medical terms. Pronouncing, spelling, defining terms and common medical abbreviations included.

NURA1401 - Basic Nursing Assistant (6.5 credits)

Completion of the class meets the Nebraska Department of Health requirements for employment as a Nursing Assistant. The course includes classroom, nursing lab and clinical experience in a health care facility. (NOTE: This class will now be offered in one semester, either online or face-to-face.)

SOCI 1010 - Introduction to Sociology (4.5 credits)

Introduction to the basic principles of sociology, including the study of culture, socialization, social structure, social institutions, investigative behavior, deviance, inequalities, and theoretical perspectives.

PSYC 2960 - Life-Span Human Development (4.5 credits)

Prerequisite: PSYC1810 or SOCI1010

Integration of the basic concepts and principles of physical, cognitive and psychosocial development at each major stage of life. Provides an essential background for students in psychology, nursing, education, social welfare, and home economics; for workers in community service; and for parents and prospective parents.

Industrial, Manufacturing & Engineering Systems Career Academy Course Sequence

Year One:

Semester 1: ENER 1100 Introduction to Energy Generation and Distribution (4.5 credits)

Semester 2: AUTT 1000 Shop Procedures (2.0 credits)
AND
AUTT 1100 Shop Safety and Repair (2.5 credits)

NOTE:
Check with your counselor to see if this Academy is available in your area.

Year Two:

Semester 1: To be determined

Semester 2: To be determined

Industrial, Manufacturing & Engineering Systems Career Academy Course Descriptions

Note: These courses do not transfer to four-year schools at this time.

ENER1100 - Introduction to Energy Generation and Distribution (4.5 credits)

Introduction to the history of electric and fluid power in the U.S., including deregulation. Private and public utilities are discussed. Methods of commercial power generation, including fossil fuels, nuclear power and renewable energy generation. Includes overview of electrical transmission and distribution systems. System reliability and governance are covered.

AUTT1000 - Shop Procedures (2.0 credits) AUTT1100 - Shop Safety and Repairs (2.5 credits)

These two courses are foundational classes that all students going into automotive, construction and engineering need as part of their Program of Study. The courses deal with the many basic elements of automotive repair, the proper use of hand tools, basic shop safety, OSHA hazard communication standards, thread repair, tube flaring, fasteners, micrometers, and other equipment used by the professional automotive technician.

Prerequisites for SCC Information Technology Career Academy Courses

SCC Academy Course

Prerequisite

ELEC 2760 Networking Infrastructure	None
INFO 1111 Logic & Design	None
INFO 1151 Computer Fundamentals	Prior computer experience
INFO 1314 Java	INFO 1111
INFO 1381 Data Comm. & Networking	INFO 1121, 1151, and 1161 (Note: HS classes may count)
INFO 1325 Internet Scripting	INFO 1111 and 1431
INFO 1431 Web Page Fundamentals	INFO 1151 and 1161 (Lincoln Campus); 1117 (Milford)
INFO 2564 Visual Basic	INFO 1214
INFO 2620 Networking Concepts	INFO 1151

Information Technology Career Academy Course Sequence

Year One:

Semester 1: INFO 1151 Computer Fundamentals (4.5 credits)

Semester 2: INFO 1111 Logic and Design (4.5 credits)

Year Two:

For the second year, students will select from the following program areas (one class per semester):

- Programming:** INFO 1314 Java (4.5 credits) **OR** INFO 2564 Visual Basic (4.5 credits)
- Networking:** ELEC 2760 Networking Infrastructure (4.5 credits) **OR** INFO 1381 Data Communication and Networking (4.5 credits) **OR** INFO 2620 Networking Concepts (3 credits)

NOTE:
Check with your counselor to see if this Academy is available in your area.

Web Page Development:

(If students select this option, they would have two classes in one semester.)
INFO 1431 Web Page Fundamentals (3 cr.) **AND** INFO 1325 Internet Scripting (3 cr.)

Note: 4.5 quarter credit hours at SCC equals 3.0 semester hours at a four-year institution

Information Technology Career Academy Transfer Information

SCC Academy Course	UNL Course	Transfers to these UNL Colleges	Tuition Savings
INFO 1151 Computer Fundamentals (4.5 cr.)	VCRD	VCRD: Vocational Skill Development Course. Limited application to UNL degree.	None
INFO 1381 Data Communications and Networking (4.5 cr.)	VCRD	VCRD: Vocational Skill Development Course. Limited application to UNL degree.	None
INFO 2564 Visual Basic (4.5 cr.)	GNCR (3.0 cr.)	GNCR: Course transfers as UNL general hours.	\$288-\$748



Information Technology Career Academy Course Descriptions

ELEC 2760 - Networking Infrastructure (4.5 credits)

Introductory course on networking infrastructure which includes switches, hubs, and routers. CCNA Exploration-Network Fundamentals course materials are utilized.

INFO 1111 - Logic and Design (5.0 credits)

An introduction to programming logic and structured program design using object-oriented principles.

INFO 1151 - Computer Fundamentals (4.5 credits)

Prerequisite: Prior computer coursework or experience.

Fundamentals of computer concepts and terminology. Topics include hardware components, software overview, business and social aspects of computers, and computer Internet researching.

INFO1314 - Java (4.5 credits)

prerequisite: INFO1111 or INFO1214

Introduction to programming using Java.

INFO1325 - Internet Scripting (3.0 credits)

Prerequisites: INFO1214 or INFO1111, and INFO 1431.

Introduction to the use of Javascript in Web page development.

INFO1381 - Data Communications & Networking (4.5 credits)

Prerequisites: INFO1121,1151, and 1161

Introduction to data communications and network terminology. Concepts related to network services, data transmission, and protocols.

INFO1431 - Web Page Fundamentals (3.0 credits)

Prerequisites: INFO1151and 1161(Lincoln); INFO1117 (Milford)

Overview of basic Web page design. Create and edit Web pages, including text, images, hyperlinks, tables, forms, and cascading style sheets.

INFO2564 - Visual Basic (4.5 credits)

Prerequisite: INFO1214

Program coding in Visual Basic. NET using a graphical interface.

INFO2620 - Networking Concepts (3.0 credits)

Prerequisite: INFO1151

Introduction to network concepts and terminology as it relates to the various types of networks, protocols, topologies and security issues.

Welding Career Academy Course Sequence

NOTE: The sequence of classes will be determined by the host site in which the student is enrolled.

Year One:

WELD 1117 Oxy Theory (2 credits, 20 class hours) AND
WELD 1119 Oxy Welding & Cutting (3 credits, 10 class hours, 60 lab hours)

AND/OR:

WELD 1122 GMAW Theory (3 credits, 30 class hours) AND
WELD 1124 GMAW Lab I (3 credits, 10 class hours, 60 lab hours)

Year TWO:

WELD 1110 SMAW Theory (2 credits, 20 class hours) AND
WELD 1112 SMAW Lab I (4 credits, 20 class hours, 60 lab hours)

AND/OR:

WELD 1128 Blueprint Reading & Weld Symbols (5 credits)



NOTE:

Check with your counselor to see if this Academy is available in your area.

SCC Welding Technology Program

Academy courses required for SCC's program: **WELD 1110, WELD 1112, WELD 1117, WELD 1119, WELD 1122, WELD 1124, WELD 1128**

Note: Other SCC programs (such as Automotive Technology; Building Construction Technology; Electronic Systems Technology; and Heating, Ventilation, Air Conditioning & Refrigeration Technology) may substitute the above courses for their program requirements for welding.

Welding Career Academy Course Descriptions

WELD 1110 - SMAW Theory (2.0 credits)

Study of Shielded Metal Arc Welding theory, safety, applications, procedures, and welding practices. Study and selection of power sources and electrodes.

WELD 1112 - SMAW Lab I (4.0 credits)

Prerequisite: WELD1110

Beginning welding of carbon steel with the Shielded Metal Arc Welding process on various joint configurations and with various electrodes.

WELD 1117 - Oxy Theory (2.0 credits)

Study of the theory, safety, equipment and applications of the Oxyacetylene Welding process.

WELD 1119 - Oxy Welding & Cutting (3.0 credits)

Prerequisite: WELD1117

Laboratory exercises with the Oxyacetylene Welding, Braze Welding, Oxyacetylene Cutting and related processes.

WELD 1122 - GMAW Theory (3.0 credits)

Study of Gas Metal Arc Welding theory, safety, applications, manipulative skills, welding principles, and procedures. Study and use of various filler wires and shielding gases and welding power source set-up.

WELD 1124 - GMAW Lab I (3.0 credits)

Prerequisite: WELD1122

Beginning welding of carbon steel with the Gas Metal Arc Welding process on various joint configurations.

NOTE: All of the Welding Academy courses listed above are required for an SCC associate degree in Welding Technology.

Career Academy Application

Southeast Nebraska Career Academy Partnership

Thank you for your interest in SENCAP. There are opportunities for students to be both college- and career-ready. Students will participate in tours and job shadows, hear speakers and experience other career exploration activities, many of them in their own communities.

Participating School Districts			
Ashland-Greenwood	Dorchester	McCool Junction	Southern
Beatrice	Exeter-Milligan	Mead	Thayer Central
Bruning-Davenport	Fairbury	Meridian	Tri County
Cedar Bluffs	Fillmore Central	Milford	Wahoo
Centennial	Freeman	Norris	Waverly
Crete	Friend	Raymond Central	Wilber-Clatonia
Deshler	Heartland	Seward	York
Diller-Odell	Malcolm	Shickley	

IN WHICH ACADEMY ARE YOU INTERESTED? Remember to check with your counselor to see if the Academy you are interested is available in your area. (check one) Agriculture Business Education Health Industrial/Manufacturing Information Technology Nursing Assistant Welding

WHAT GRADE WILL YOU BE IN FALL 2011? (check one) Junior Senior

TUITION: Tuition for all participating students will be paid for through a partnership between SCC and the K-12 schools.

INSTRUCTIONS:

Please complete and sign the following pages:

- Student/Parent Information
- School Contact Information
- Honor Statement (**must be signed**)

QUESTIONS ABOUT THE PROGRAM AND/OR THIS APPLICATION: Contact your high school counselor.

*Return this completed and signed four-page application form to your high school counselor by **March 25, 2011***

STUDENT/PARENT INFORMATION

(Please type or print neatly in black ink)

Name _____ Address/City/Zip _____

Phone# _____ E-mail _____ Birth Date _____

SSN# _____ High School _____ Current Year in School _____

Name(s) of parent/guardian the student lives with: _____

Guardian/Father's Name: _____ Daytime Phone: _____

Cell Phone: _____ E-mail _____

Guardian/Mother's Name: _____ Daytime Phone: _____

Cell Phone: _____ E-mail _____

STUDENT/PARENT CERTIFICATION:

I certify that the facts contained in this application are true and complete to the best of my knowledge. I understand that if selected for the SCC Career Academy, falsified statements may be grounds for dismissal. I understand that as part of the Career Academy, employers may require a drug test, insurance approval, and/or background checks. I have read the attached Honor Statement and understand the level of commitment required, if selected.

Student Signature _____ Parent Signature _____

SCHOOL CONTACT INFORMATION

Please provide the name of your high school administrator or counselor who will serve as contact for issues such as grading and attendance.

Name _____

Title _____ Phone _____ E-mail _____

STUDENT ESSAY

Note: School districts have the option of requiring students to complete the essay below. Check with your school counselor if you are required to submit an essay as part of your application.

(On a separate piece of paper along with your name and school name)

Please answer the following questions. Typed essays are preferred (neatly printed in black ink is acceptable). Remember to use your best grammar and punctuation skills.

- 1. GOALS:** Briefly describe your future career and educational goals. Also, explain how the Career Academy Program will help you achieve your goals.

- 2. ATTENDANCE:** Attendance in Career Academy classes is mandatory. All absences and tardies will be reported to your high school. Describe your school attendance/tardies record for the last two (2) years. If you have had more than three (3) absences per semester, give a brief explanation of why those absences occurred. (Example: illness or injury.)

- 3. WHY:** Briefly explain why you feel you should be selected to participate in the SCC Career Academy Program.

- 4.** Please enclose a resume or, in the blanks below, list any additional activities you have participated in that will help the selection committee evaluate your qualifications for an academy. (Examples: school, church, civic, or community activities; part-time jobs; volunteer work; honors received; offices held.)

**PLEASE RETURN YOUR COMPLETED APPLICATION PACKET
TO YOUR HIGH SCHOOL COUNSELOR
DEADLINE: March 25, 2011**

Teacher/Counselor Recommendation Form

Student Name: _____ Grade: _____

School: _____

The following checklist is provided for those who know the student well enough to accurately assess him/her.

No Basis for Judgment		Below Average	Average	Above Average	Excellent (Top 10%)
	Responsibility				
	Attitude				
	Effort				
	Interpersonal Skills				
	Personal Values and Ethics				
	High School Attendance				

If you wish to give reasons for any of your ratings, please do so here. Often, an explanation for the significance of ratings is helpful during the selection process.

Feel free to make other comments that will indicate your estimation of this student's qualifications for the program:

PLEASE CIRCLE ONE: I DO / DO NOT recommend the above student be accepted into the SCC Career Academy.

Printed Name _____ Title _____

Signature _____ Phone _____ Date _____

Please return this form in a **SEALED ENVELOPE** to your school counselor.

SENCAP Contact Information

ESU 2 & 6 AREA CAREER ACADEMY COORDINATORS

Western Region

Connie Hood
Office: ESU #6, Milford, NE
Ph: (402) 761-3341
Cell: (402) 450-7441
chood@esu6.org

Northern Region

George Robertson
Office: Wahoo High School,
Wahoo, NE
Phone: (402) 443-3051
Cell: (402) 277-6484
Home: (402) 624-2303
groberts@esu6.org

Central Region

Wilma Jackson
Office: ESU #6, Milford, NE
Phone: (402) 761-3341
Cell: (402) 418-4173
Home: (402) 418-4173
wjackson@esu6.org

Eastern Region

Erin May
Office: ESU #6, Milford, NE
Phone: (402) 761-3341
Cell: (402) 770-1316
emay@esu6.org

ESU 5 AREA CAREER ACADEMY COORDINATORS

Doris Martin
(402) 228-3468 ext. 1275
dmartin@southeast.edu

Rachel Eickman
(402) 228-3468 ext. 1390
reickman@southeast.edu

SENCAP ADMINISTRATORS

Dr. Randy Nelson
Office: ESU #6, Milford, NE
Ph: (402) 761-3341
Cell: (402) 640-9226
Home: (402) 643-9861
rnelson@esu6.org

Rod Rhodes
Office: 301 S. 68th St. Place, Lincoln, NE
Ph: (402) 323-3429
rrhodes@southeast.edu

