

Arts, Crafts & Hobbies

Winter 2020



Soap Making 101

Discover how to make healthy handmade soap from scratch. You will learn the basic soap-making process, the chemistry behind it and how to safely make soap. We will cover everything you need to know about soap making supplies and ingredients.

There is a \$30 supply fee payable in class. Check or cash only for supplies. Product sales will not be a part of this class.

Keyword: Soap

Feb. 29	S	1-4 p.m.	\$35
Louisville, SHSH		Wolcott	AREA-5725-PLSA

NEW! Lotion Potions

Learn about skin, how to keep it healthy, and create your own homemade lotion. Commercially made lotions contain lots of "stuff" that may not be as good for your skin as advertised. Learn how to make lotion at home that is better for you and your skin. You'll leave with two bottles (8 ounces each) of lotion, recipes, and a whole new outlook on how you treat your skin.

Bring a meticulously clean stick blender. If you don't have one, there will be some available to borrow or to purchase from the instructor. There is a \$10 supply fee associated with this class payable to the instructor day of class. Cash or check only for supplies.

Keyword: Lotion

Feb. 1	S	9:30 a.m.-11:30 a.m.	\$29
Plattsmouth, PLLC, 102		Hess	AREA-6713-PLSA

FREE TRAINING

For information on financial assistance options, visit www.southeast.edu/cefnassist

Scrapbook Retreat

Grab your friend and your photos and let's preserve those memories! Learn traditional layouts or digital scrapbooking. We'll do it together!

Bring the project you would like to work on. Vendors will be available. The full retreat is held Friday and Saturday from 9 a.m.-11 p.m. and Sunday from 9 a.m.-4 p.m.

Keyword: Scrapbook

Full Retreat

March 20-22	F, S, U	See Desc.	\$65
Plattsmouth, PLLC, 103		Warga	AREA-3373-PLSA

7-Hour Session Options

March 20	F	9 a.m.-4 p.m.	\$15
Plattsmouth, PLLC, 103		Warga	AREA-3308-PLSA
March 20	F	4 p.m.-11 p.m.	\$15
Plattsmouth, PLLC, 103		Warga	AREA-3308-PLSB
March 21	S	9 a.m.-4 p.m.	\$15
Plattsmouth, PLLC, 103		Warga	AREA-3308-PLSC
March 21	S	4 p.m.-11 p.m.	\$15
Plattsmouth, PLLC, 103		Warga	AREA-3308-PLSD
March 22	U	9 a.m.-4 p.m.	\$15
Plattsmouth, PLLC, 103		Warga	AREA-3308-PLSE

Scrapbook Workshop

Enjoy the evening scrapbooking with others. Invite a friend and bring your project with you or ask instructor for supplies.

New student instruction will be available from 5-6 p.m. (digital or traditional) before each workshop.

Keyword: Scrapbook

Jan. 6	M	5-10 p.m.	\$10
Plattsmouth, PLLC, 103		Warga	AREA-3268-PLSA
Feb. 3	M	5-10 p.m.	\$10
Plattsmouth, PLLC, 103		Warga	AREA-3268-PLSB

Creating Pottery Garden Markers

An introduction to hand-building pottery. We will be making garden makers out of clay. We will design and create a variety of styles.

The final projects will be fired and glazed and pick-up will be arranged by the instructor. Product sales will not be a part of this class.

Keyword: Pottery

March 15	U	2-4 p.m.	\$45
Louisville, SHSH		Wolcott	AREA-8412-PLSA

Location Key

Louisville, SHSH.... Simply Home Sweet Home Studio, 8980 Raven Drive
(Class location is rural, three miles from Hwy 66)
Plattsmouth, PLLC..... Learning Center at Plattsmouth, 537 Main St.

Check out all classes offered at www.southeast.edu/PlattsmouthLC
Find us on Facebook® at www.facebook.com/SCCLearningCenteratPlattsmouth

For more information, contact **Lyn Belitz** at 800-828-0072, ext. 2298, or lbelitz@southeast.edu

Cancellation/Refund Policy: You must call the Continuing Education office at 402-437-2700 or 800-828-0072 the day before the class begins to receive a 100% refund. If you call the day of the class or after it has started, no refund will be issued. If a class is cancelled or student drops (according to the refund policy), refunds will be issued to the student, unless a third party has been formally billed by SCC Business Office. **ADA Reasonable Accommodations:** SCC provides services and reasonable accommodations to allow persons with disabilities to participate in educational programs and other College activities. For information on requesting ADA reasonable accommodations, contact the SCC Area Access/Equity/Diversity Office.

Digital Die Cutting 101/Cricut 101

Explore the world of digital die cutting and discover how these helpful machines have revolutionized the way in which many crafters create. We will create a craft project to take home.

A Cricut® Maker will be used for demonstrations in class.

Keyword: Cutting

Jan. 11	S	1-3 p.m.	\$25
Plattsmouth, PLLC, 103		Wolcott	AREA-2159-PLSA

Rustic Barn Wood Sign

Do you love that barn wood look? Make your very own painted Huskers, Welcome, Home, or Family Name sign. No barn wood? No problem. We will use a piece of 100-year-old barn wood which would be perfect for your front porch or decorator piece.

Wear paint clothes and bring a hair dryer. There is a \$20 supply fee payable to instructor in class. Check or cash only for supplies.

Keyword: Barn

March 10	T	6:30-8:30 p.m.	\$29
Plattsmouth, PLLC, Commons		Leonard	AREA-3617-PLSA

Milk Paint 101: Farmhouse Barn Quilt

Paint and create a work of art to display in your home. We will be using milk paint and chalk paint. The quilt measures 25 inches.

Product sales will not be a part of this class.

Keyword: Barn

Jan. 18	S	1-3 p.m.	\$65
Louisville, SHSH		Wolcott	AREA-5680-PLSA

Spring Porch Signs Using Chalk & Milk Paint

Design your own porch sign. Several design options will be available. A variety of sizes too.

Product sales will not be a part of this class.

Keyword: Spring

Feb. 23	U	2-4 p.m.	\$63
Louisville, SHSH		Wolcott	AREA-7677-PLSA

Farmhouse Clocks

Learn all about Miss Mustard Seed's Milk Paint: the ingredients, techniques of mixing, applying, and sealing milk paint. You'll create your stained, painted, distressed 30-inch Farmhouse Clock during the workshop to take home.

Product sales will not be a part of this class.

Keyword: Clocks

Jan. 12	U	2-4:30 p.m.	\$69
Louisville, SHSH		Wolcott	AREA-2160-PLSA

Giant Ruler

This is a clever ruler type wall art and so many ways to use this ruler. It would be fun as a growth chart, in a classroom, play room, or bedroom décor.

Choose between plain, stained or white chevron boards. Bring a hair dryer to class and wear paint clothes. Registration deadline Feb. 13. There is a \$20 supply fee payable to instructor in class. Cash or check only for supplies.

Keyword: Ruler

Feb. 20	Th	6:30-8:30 p.m.	\$19
Plattsmouth, PLLC, Commons		Leonard	AREA-2157-PLSA

Paint Pouring

Learn the basics of fluid paint pouring. It is a little messy, but lots of fun. We will be creating an abstract piece of art to take home. Once you learn this technique, you will be able to apply it to many different projects.

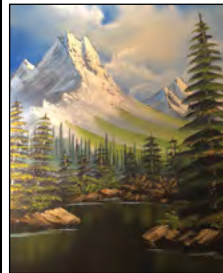
Product sales will not be a part of this class.

Keyword: Paint

Feb. 15	S	1-3 p.m.	\$55
Louisville, SHSH		Wolcott	AREA-7679-PLSA

BOB ROSS PAINTING

Bob Ross classes are for painters of all abilities, including beginners. Choose a class at various locations in southeast Nebraska. See specific class for supply fee details. You will leave with your completed painting. Frames are not included. Our instructors are all Bob Ross certified. Selling and sales will not be a part of these classes.



Bob Ross: Mountain Retreat

Take your painting experience to the next level with this fun 16-inch by 20-inch painting. Bob's techniques make this painting a breeze and so enjoyable to do.

There is a \$30 fee associated with this course payable in class. Check or cash only for supplies. Brown bag lunch recommended.

Keyword: Ross

Feb. 8	S	10 a.m.-3 p.m.	\$39
Plattsmouth, PLLC, 103		Cassel	AREA-7795-PLSA

Bob Ross: Light at the Summit

A white glow casts its spell over the rugged mountain range.

There is a \$25 fee associated with this course payable in class. Check or cash only for supplies. There is a 30-minute lunch break on your own. A sack lunch and beverage are recommended.



Keyword: Ross

March 14	S	9:30 a.m.-3:30 p.m.	\$45
Plattsmouth, PLLC, 103		Belik	AREA-7830-PLSA

NEW! Bob Ross: Joy of Painting

Discover the joy of painting! Class will vote to determine which painting the group will create in class. A fun way to learn Bob Ross painting techniques. No experience necessary. Ages 8-17 are welcome.

There is a \$18 fee associated with this course payable in class. Check or cash only for supplies.

Keyword: Ross

March 18	W	9-11:30 a.m.	\$24
Plattsmouth, PLLC, 103		Cassel	AREA-6390-PLSA
March 18	W	1-3:30 p.m.	\$24
Plattsmouth, PLLC, 103		Cassel	AREA-6390-PLSB

Location Key

Louisville, SHSH.... Simply Home Sweet Home Studio, 8980 Raven Drive
(Class location is rural, three miles from Hwy 66)

Plattsmouth, PLLC..... Learning Center at Plattsmouth, 537 Main St.

Check out all classes offered at www.southeast.edu/PlattsmouthLC
Find us on Facebook® at www.facebook.com/SCCLearningCenteratPlattsmouth

For more information, contact **Lyn Belitz** at 800-828-0072, ext. 2298, or lbelitz@southeast.edu

Cancellation/Refund Policy: You must call the Continuing Education office at 402-437-2700 or 800-828-0072 the day before the class begins to receive a 100% refund. If you call the day of the class or after it has started, no refund will be issued. If a class is cancelled or student drops (according to the refund policy), refunds will be issued to the student, unless a third party has been formally billed by SCC Business Office. **ADA Reasonable Accommodations:** SCC provides services and reasonable accommodations to allow persons with disabilities to participate in educational programs and other College activities. For information on requesting ADA reasonable accommodations, contact the SCC Area Access/Equity/Diversity Office.

Shibori Dyeing

Hey man, love that crazy tie dye vibe? Turn your boring old T-shirt in to a work of art! Learn various folds and techniques of tie dyeing. We will have demonstrations on various techniques and then prepare and dye your shirt.

Information also will be provided on further embellishment. Bring a 100% cotton T-shirt to class to tie-dye. Wear old clothes.

Keyword: Shibori

Feb. 1	S	9-11 a.m.	\$45
Louisville, SHSH		Wolcott	AREA-2171-PLSA

JEWELRY

Jewelry Making

We will be creating trendy jewelry from leather, including earrings, bracelets and tassel necklaces. Explore designs, colors and shapes to create one-of-a-kind jewelry. Your creations will be unique!

All supplies included. Product sales will not be a part of this class.

Keyword: Jewelry

March 22	U	2-4 p.m.	\$45
Louisville, SHSH		Wolcott	AREA-2292-PLSA

Location Key

Louisville, SHSH.... Simply Home Sweet Home Studio, 8980 Raven Drive
(Class location is rural, three miles from Hwy 66)
Plattsmouth, PLLC..... Learning Center at Plattsmouth, 537 Main St.

NEEDLE ARTS & SEWING

Quilting for Beginners

Do you want to learn to quilt but have limited time? Learn the basics of quilting (cutting, piecing, quilting, and binding) as you construct a table topper or baby quilt, it all depends on your fabric selection. Best of all, you will have acquired the needed skills to make almost any quilt pattern.

Bring to class: sewing machine in good working order along with the user's manual, 1/4-inch foot if available, rotary cutter, 6-inch by 24-inch ruler, and basic sewing supplies. Fabric needed: 5/8 yard background fabric, 1/2 yard fabric choice two, 1 yard of fabric choice 3, 1/3 yard fabric for binding, and cotton batting measuring at least 43 inches by 43 inches. In choosing your fabrics, look for a light, medium and dark values for a pleasing combination.

Keyword: Quilting



Feb. 4	T	6-9 p.m.	\$55
Plattsmouth, PLLC, 103		Patton	AREA-2846-PLSA

Check out all classes offered at www.southeast.edu/PlattsmouthLC
Find us on Facebook® at www.facebook.com/SCCLearningCenteratPlattsmouth

For more information, contact **Lyn Belitz** at 800-828-0072, ext. 2298, or lbelitz@southeast.edu

Cancellation/Refund Policy: You must call the Continuing Education office at 402-437-2700 or 800-828-0072 the day before the class begins to receive a 100% refund. If you call the day of the class or after it has started, no refund will be issued. If a class is cancelled or student drops (according to the refund policy), refunds will be issued to the student, unless a third party has been formally billed by SCC Business Office. **ADA Reasonable Accommodations:** SCC provides services and reasonable accommodations to allow persons with disabilities to participate in educational programs and other College activities. For information on requesting ADA reasonable accommodations, contact the SCC Area Access/Equity/Diversity Office.



Registration Form - Non-Credit Course

Today's Date _____/_____/_____

Complete this form with payment information and send via mail to Southeast Community College, Continuing Education, 301 S. 68th St. Place, Lincoln, NE 68510 OR FAX to 402-437-2703

PLEASE PRINT

The College requests, but does not require, a student provide their Social Security number during the admissions process. Visit www.southeast.edu/collegecatalog for additional information.

Social Security Number OR SCC Student ID Number		Birth Date	Name: Last		First	Middle Initial
Residence Mailing Address			City	State	Zip	County #
Email Address		Cell Phone		<input type="checkbox"/> Home <input type="checkbox"/> Business Phone		
I identify as: <input type="checkbox"/> Male <input type="checkbox"/> Female	<input type="checkbox"/> Nebraska Resident <input type="checkbox"/> Non-Resident	Ethnicity (select one): <input type="checkbox"/> Hispanic or Latino <input type="checkbox"/> Not Hispanic or Latino		Race (Select one or more): <input type="checkbox"/> White <input type="checkbox"/> Asian <input type="checkbox"/> American Indian/Alaska Native <input type="checkbox"/> Native Hawaiian/Other Pacific Islander <input type="checkbox"/> Black/African-American		

COURSE NUMBER	TITLE	START DATE	COST
-	-	-	\$
-	-	-	\$
-	-	-	\$
-	-	-	\$

SIGNATURE

Check Cash Mastercard AMEX Discover VISA V Code _____
Name as it appears on card: _____
Exp. Date _____ CC # _____

Billing agency (INCLUDE LETTER OF AUTHORIZATION ON COMPANY LETTERHEAD)

For the protection of your personal credit card information, do not email this form to SCC. If faxing, only use the fax number listed or verify with SCC before using another SCC fax number.

Would you like a receipt mailed to you?
 Yes No

SCC Staff Tuition Waiver ()

TOTAL DUE

FOR OFFICE USE ONLY

ID# _____
DE _____

Submission of this form indicates that I understand: 1) that my registration is complete and that I am accountable for the tuition and fees and subject to a grade in the courses listed; 2) that should I officially drop, cancel, or withdraw, any refund in tuition will be determined by the date I submit my request to Continuing Education; 3) that failure to attend a course does not constitute an official drop/withdrawal; 4) the personal information contained herein is correct as shown; and 5) any changes in SSN, legal name, address, residency, etc. must follow the College procedures in the Student Handbook and College Catalog. It is the policy of SCC to provide equal opportunity and nondiscrimination in all admission, attendance, and employment matters to all persons without regard to race, color, religion, sex, age, marital status, national origin, ethnicity, veteran status, sexual orientation, disability, or other factors prohibited by law or College policy. Inquiries concerning the application of SCC's policies on equal opportunity and nondiscrimination should be directed to the Vice President for Access/Equity/Diversity, SCC Area Office, 301 S. 68th St. Place, Lincoln, NE 68510, or jsoto@southeast.edu.

Register Online for SCC Continuing Education Classes

You must have an email account to register online.

1. Go to <http://bit.ly/RegisterCE>.
2. **Search for your class** by entering either a **key word** in the title or the **course number**. Click **Submit**. (Enter information in only one field for broader results.)
Key Word Example: *Driver*
Course Number Example: *TRAN-3398*
3. **Select the course** for which you wish to register. Click **Submit**.
4. Enter your **personal information, certify your identification** and click **Submit**.
* You must provide your Social Security Number.
5. *Optional*: Enter your **Additional Registration Information** and click **Submit**.
6. If you want to register for additional classes, select **Search for more classes** under "Choose one of the following." If you are finished selecting the class(es) for which you want to register, select **Register now (check out)**. Select your **Payment Type**. Click **Submit**.
7. Enter your **payment information**. Click **Submit**.

You will see your **class acknowledgement** with information about your **SCC Student ID Number, SCC User ID** and **password**. You also will receive an email with this same information for your records.

In the future it will be easy to register by logging in using your SCC User ID and password and it will not be necessary to provide your Social Security number again.

If you have problems getting registered, please call 402-437-2700 or 800-828-0072 for assistance.



301 S. 68th St. Place, Lincoln, NE 68510
402-437-2700 • 800-828-0072 • FAX 402-437-2703
www.southeast.edu/continuing

* The College requires a student's Social Security number as a condition for enrollment. A student's Social Security number information constitutes an "educational record" under FERPA.