

## Arts, Crafts & Hobbies

Fall 2020



Grab your scrapping supplies and clear your calendar for a day of uninterrupted creative recreation.

Registration includes 15 hours of cropping at your own table, access to a computer for journaling, and a chance to win multiple door prizes. Visit the SCC website at [www.southeast.edu/cearts](http://www.southeast.edu/cearts) and click on Scrapfest for a detailed brochure and to view the projects. Please write on your registration form who you would like to be seated next to. If you are registering online, email [continuinged@southeast.edu](mailto:continuinged@southeast.edu) who you would like to be seated next to. Please Note: All meals are on your own. NOTE: Last date to drop and receive a refund is noon Sept. 24.

**Keyword: Scrapfest**

Sept. 26	S	9 a.m.-Midnight	\$40
Lincoln, CEC, 302	Van Winkle	LLLX-0103-CEFA	

### Scrapfest Classes

Scrapfest classes are optional. You will register and pay \$10 per class the day of Scrapfest. Cash or check please. We are really busy designing the great class options for September so you will have to wait until closer to September for the picture reveal.

<b>One Fine Day</b>	<b>10 a.m.</b>	<b>Cards with Character</b>	<b>3 p.m.</b>
<b>Heat Wave</b>	<b>11 a.m.</b>	You'll love these handmade specialties, and so will the recipients. Each of the four designs has unique techniques that bring it to life. This is a great opportunity to try some new products as well.	
<b>Oh, the Memories</b>	<b>1 p.m.</b>		
<b>Our Story</b>	<b>2 p.m.</b>		

### Friday Night Crop

Prerequisite: Must register for Scrapfest (LLLX-0103) to attend the Friday night scrap.

Join us on Friday for this "bare bones" crop. Leave your goods overnight and pick up where you left off when you arrive on Saturday. That's five hours of extra scrapping for only \$5. No vendors, prizes, food, etc., just extra crop time!

**Keyword: Crop**

Sept. 25	F	5-10 p.m.	\$5
Lincoln, CEC, 302	J Van Winkle	LLLX-0244-CEFA	

### Location Key

Lincoln, CEC .....Jack J. Huck Continuing Education Center, 301 S. 68th St. Place

### NEW! Junk Journal: File Folder

Let's make a fun, fast junk journal (out of a file folder)! These shabby little friends are a fun and green way to repurpose some of the "useless" or not-so-useless paper that accumulates in our lives.

Upon registration, you will receive an email with a supply list (scissors, ruler, adhesive) and suggestions/ideas of things for you to save for your pages in your journal. There is a \$5 supply fee payable in class. Cash only for supplies.

**Keyword: Journal**

Sept. 28	M	6-8 p.m.	\$19
Lincoln, CEC, 406		LLLX-1346-CEFA	



### NEW! 4 Craft Combo

Let's try something new. Join our craft combo LIVE Online Zoom classes for an introductory taste of four crafts that are just for this stay at home time. Our craft guru Nikki Roseberry will lead these classes for each of the crafts shown. Supplies are limited so register early before we run out!



Once registration is closed, you will receive email notification to drive by the Continuing Education Center to pick up your craft bag of supplies. More details on the pick-up process to come in your email. On the night of class, join the Zoom classroom and craft away with Nikki. This will be such fun! Registration deadline Oct. 20.

**Keyword: Craft**

Oct. 27-Nov. 5	T, Th	6-7 p.m.	\$49
LIVE Online, Zoom	Roseberry	LLLX-0086-TCFA	
Oct. 27-Nov. 5	T, Th	7:15-8:15 p.m.	\$49
LIVE Online, Zoom	Roseberry	LLLX-0086-TCFB	



For your convenience, we are offering LIVE Online learning opportunities. These classes are delivered live via Zoom. They are not prerecorded videos. This allows you, the student, to participate from the comfort of your home. Look for the LIVE Online logo shown to the left to find these classes. As our learning environment changes, we look forward to offering additional classes live online.

Have an idea for a class that could be offered live online? Please submit your idea at <https://bit.ly/scceonlinecourses>.

For more information, contact us at 800-828-0072 or [continuinged@southeast.edu](mailto:continuinged@southeast.edu)

## Vintage Book Pumpkins

Make a darling vintage book pumpkin just in time to spruce up your space for fall. This timeless piece will add a touch of class to your fall décor.

Bring a sharp knife such as an Xacto. Supply fee of \$9 paid to instructor in class for all supplies. Check or cash only for supplies.



**Keyword: Pumpkins**

Sept. 30	W	6-7:30 p.m.	\$19
Lincoln, CEC, 404	Van Winkle	LLLX-0019-CEFA	

## Tag, You're It!

Craft some handmade tags that can be used as note cards, gift tags, gift card holders, tree ornaments, and more. We will make a variety in class, and you will be able to make more at home.

There will be a \$5 supply fee payable in class. Bring to class: sharp scissors (if you have a larger and smaller pair, bring both), adhesive (tape runner, double stickie tape etc.), sharp pencil, black fine-tip marker.

**Keyword: Tag**

Oct. 27	T	5:30-7:30 p.m.	\$19
Lincoln, CEC, 405		LLLX-0031-CEFA	

## Handmade Greeting Cards

Do you want to create fabulous cards without buying a ton of new materials? Get inspired as we create six new cards with techniques that will spice up your favorite supplies. There also will be new products to show you what is out there and how to use it. These are all NEW cards from previous classes.



Suggested supplies include: glue dots, tape runners or double-sided tape, pop dots, scissors, glue pen, and piercing tool. Register early because your card supply kit will be mailed to you. Registration deadline for Sec. TCFB is Sept. 29 and Sec. TCFC is Nov. 2.

**Keyword: Cards**

Oct. 7	W	6-8 p.m.	\$36
LIVE Online, Zoom	Van Winkle	LLLX-0029-TCFB	
Nov. 11	W	6-8 p.m.	\$36
LIVE Online, Zoom	Van Winkle	LLLX-0029-TCFC	

## 4th Annual Jigsaw Puzzle Derby

Hey Puzzlers,

I am keeping my fingers crossed that we will be able to host the 4th annual puzzle contest in 2021. The puzzle contest is one of our most popular events and such fun to participate in. Acquiring the number of same

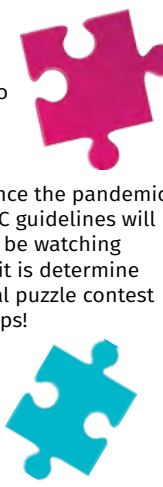
style puzzles has been a challenge since the pandemic started and not knowing what the CDC guidelines will be in 2021 is another factor that I will be watching closely. Rest assured that as soon as it is determine that we can safely host the 4th annual puzzle contest we will be shouting it from the rooftops!

Please watch for our winter schedule that will be coming out in November for the latest 2021 puzzle contest information.

Happy Puzzling!

Nancy Holman

Director, Leisure Programming



## Show Your Door Some Love

Be the talk of the neighborhood! Grab your friends and join this great "make-and-take" class. Come and get inspired to paint your own fun and unique door sign.

There are many themes to choose from and you will need to preselect your sign two weeks prior to class then show up ready to have fun.

Some theme options are: school, camper, fall, Valentine, Winter, Husker/Nebraska, Spring (tulips, watering can etc.), initials, mason jar, flowers, fruit, etc.

You will receive an email around Aug. 14 or Oct. 22 (depending on your class date) with theme options and sample signs. You will be using paint so dress appropriately.

Doors & More will provide all materials, guidance and inspiration for the day.

**Keyword: Door**

Aug. 28	F	6-8:30 p.m.	\$39
Lincoln, CEC, 102		Bonneau LLLX-1143-CEFA	
Nov. 6	F	3-5:30 p.m.	\$39
Lincoln, CEC, 102		Bonneau LLLX-1143-CEFC	
Nov. 6	F	6-8:30 p.m.	\$39
Lincoln, CEC, 102		Bonneau LLLX-1143-CEFB	

## NEW! Digitizing Memories

Do you have envelopes full of negatives and slides or boxes of photos? Discover how to preserve them in a more organized form by scanning. We will look at scanning techniques and some of the devices to make scanning easy to do. Discussion will involve the software necessary to scan your negatives, slides and photos and look at the software "VueScan". Have a negative, slide and/or print available to scan during the class and we will explore the process of scanning and saving those prints digitally so they will be memories forever.



**Keyword: Memories**

Oct. 27 & Nov. 3	T	6:30-7:30 p.m.	\$29
LIVE Online, Zoom	Keller	LLLX-0113-TCFA	



For your convenience, we are offering LIVE Online learning opportunities. These classes are delivered live via Zoom. They are not prerecorded videos. This allows you, the student, to participate from the comfort of your home. Look for the LIVE Online logo shown to the left to find these classes. As our learning environment changes, we look forward to offering additional classes live online.

Have an idea for a class that could be offered live online? Please submit your idea at <https://bit.ly/scceonlinecourses>.

## Location Key

Lincoln, CEC .....Jack J. Huck Continuing Education Center, 301 S. 68th St. Place

For more information, contact us at 800-828-0072 or [continuing@southeast.edu](mailto:continuing@southeast.edu)



## Digital Scrapbooking

Would you like to scrapbook online? The instructor will show you how to load your photos, pick your theme, album type, and page layout. We will add photos, embellishments and learn the basics of digital scrapbooking.



No software needed. You will be able to access your album from any online computer.

**Keyword: Scrapbooking**

Nov. 30 LIVE Online, Zoom	M Warga	7-9 p.m. AREA-3081-TCFA	\$19
------------------------------	------------	----------------------------	------

## Pictures Galore, Organizing & More!

So you have thousands of photos, now what? We will offer some strategies for tackling the overwhelming task of getting a system in place to safely store your precious memories. Also, what do you do with the dreaded box of photos buried in the closet? We have many solutions to offer!



**Keyword: Pictures**

Oct. 28 LIVE Online, Zoom	W Van Winkle	6-7:30 p.m. LLLX-0289-TCFA	\$19
------------------------------	-----------------	-------------------------------	------

## Nothing New Trip

**Fri., Sept. 11** TRIP-1052-BEFA \$79

Now that we have your attention, let us explain this one-of-a-kind day trip. Join Kelly and Nancy on an excursion to Omaha for a day of thrifting and treasure hunting. Leave the driving to us because you will need to rest between all of our secondhand and thrift stops. Remember, one person's trash is another person's treasure. Who knows what you will find?

Trip requires a fair amount of walking and bus steps. Cost includes motor coach transportation and lunch. Registrations will be taken until enrollment limit is met. No refunds 14 days prior to departure date. If you need to request reasonable accommodations based on a disability, you must register and contact the Continuing Education office at [continuinged@southeast.edu](mailto:continuinged@southeast.edu) by Aug. 28.

SCC reserves the right to cancel any pick-up stops that do not meet the minimum enrollment. Confirmation letters will be mailed to each student approximately two weeks before the trip. Letters will include exact pick-up times, locations and RSVP information. SCC staff tuition waiver does not apply.

**Keyword: Trip**

## Printmaking

Discover the basics of printmaking. Various block printing and etching techniques will be covered.

All materials provided.

**Keyword: Print**

Sept. 3-24 Lincoln, LUXC	Th	6:30-9 p.m. LLLX-0807-OCFA	\$125
Oct. 1-22 Lincoln, LUXC	Th	6:30-9 p.m. LLLX-0807-OCFB	\$125
Oct. 29-Nov. 19 Lincoln, LUXC	Th	6:30-9 p.m. LLLX-0807-OCFC	\$125



For your convenience, we are offering LIVE Online learning opportunities. These classes are delivered live via Zoom. They are not prerecorded videos. This allows you, the student, to participate from the comfort of your home. Look for the LIVE Online logo shown to the left to find these classes. As our learning environment changes, we look forward to offering additional classes live online.

Have an idea for a class that could be offered live online? Please submit your idea at <https://bit.ly/scceonlinecourses>.

For more information, contact us at  
800-828-0072 or [continuinged@southeast.edu](mailto:continuinged@southeast.edu)

## Metalsmithing

Class is intended for those who have taken a metalsmithing course before and want to expand their ability to shape, form and fuse metal. Students can work on self-directed projects with instructor guidance.

Basic supplies and tools are provided.

**Keyword: Metalsmithing**

Oct. 13-Nov. 3 Lincoln, LUXC	T	6:30-9 p.m. LLLX-0271-OCFA	\$150
---------------------------------	---	-------------------------------	-------



## Barn Quilts

Barn quilts are no longer just for rural barns. Painted in bold and vivid colors, you will see them in the city on garages, sheds and fences for all to see and love. Your instructor will have many of your favorite quilt block grids to choose. Best of all, no artistic talent needed!

You can choose either the popular 2-foot by 2-foot size or the larger 3-foot by 3-foot size. Bring to class: yellow FrogTape, scissors and a hair/blow dryer.

**Keyword: Barn**

### 2-foot by 2-foot

Oct. 28 Lincoln, CEC, 102	W Mapel	6-8 p.m. LLLX-1196-CEFA	\$69
------------------------------	------------	----------------------------	------

### 3-foot by 3-foot

Oct. 28 Lincoln, CEC, 102	W Mapel	6-8 p.m. LLLX-1196-CEFB	\$89
------------------------------	------------	----------------------------	------

## Beginning Wood Carving

Discover basic wood-carving techniques and learn about the tools, woods and history associated with traditional carving. You will learn sharpening skills and painting techniques all while keeping safety as the top priority.

If you have never carved before, you will need a wood-carving knife, mesh glove and apron. After registration, you will be sent an email with additional information regarding the three items listed above. If you have any wood-carving tools, bring them. There will be a fee payable in class for the wood blanks to carve on. Prices vary between \$5-\$30. Cash or check only for supplies. Class will meet at the instructor's wood shop.

**Keyword: Wood**

Aug. 25-Sept. 29 Lincoln, VWSP	T Vang	6:30-9 p.m. LLLX-1199-OCFA	\$109
Aug. 27-Oct. 1 Lincoln, VWSP	Th Vang	9-11:30 a.m. LLLX-1199-OCFB	\$109
Oct. 6-Nov. 10 Lincoln, VWSP	T Vang	6:30-8:30 p.m. LLLX-1199-OCFC	\$109
Oct. 8-Nov. 12 Lincoln, VWSP	Th Vang	9:30-11:30 a.m. LLLX-1199-OCFD	\$109

### Location Key

Lincoln, CEC .....Jack J. Huck Continuing Education Center, 301 S. 68th St. Place  
Lincoln, LUXC.....Lux Center for the Arts, 2601 N. 48th St.  
(Enter through the glass door on the west side of building off parking lot.) NOTE: Ceramics classes are in the building directly west of the Lux Center. Look for the lime green yard sign.  
Lincoln, VWSP.....Vang Wood Shop, 6700 Francis St.



## Gourd Art

Gourd art involves creating works of art using hard-shelled gourds as an art medium. Gourd surfaces may be carved, painted, sanded, burned, dyed, or polished. We will create an array of art pieces, bowls, sculpture, or wall art (not birdhouses). Beginners to advanced students welcome.

Plan on additional supplies which will be discussed at the first class. Gourd costs vary depending on the size. However, plan to spend between \$10 and \$45 on your gourd. Bring to class: apron, dust mask (bring your own or purchase in class for \$2). Cash or check only for supplies. Class will meet at the instructor's woodshop.

<b>Keyword: Gourd</b>			
Oct. 7-Nov. 11	W	9-11:30 a.m.	\$109
Lincoln, VWSP	Vang	LLLX-0033-OCFC	
Oct. 8-Nov. 12	Th	6:30-8:30 p.m.	\$109
Lincoln, VWSP	Vang	LLLX-0033-OCFD	

## Beginning Handweaving

Weave a "Sampler" on a 4-harness table loom. Learn the terminology, how to measure warp and weft, thread a loom and WEAVE!

All supplies will be furnished. This is a three-Saturday class, and you must be able to attend all three sessions. Please bring a sack lunch. There is a \$40 supply fee payable at the first class to the Handweavers Guild. Check or cash only for supplies.

<b>Keyword: Weaving</b>			
Oct. 17-31	S	9 a.m.-2:30 p.m.	\$45
Lincoln, WEAV		LLLX-1005-OCFA	

## Youth Pottery Wheel

Ages 10-15

This is an introduction for tweens and teens to the fundamentals of the pottery wheel. For more experienced students it will allow more time for you to hone your skills.

All clay, glazes and firing provided.

<b>Keyword: Pottery</b>			
Sept. 19-Oct. 10	S	12:30-2 p.m.	\$85
Lincoln, LUXC, Ceramic Bldg		LLLX-1212-OCFA	
Oct. 17-Nov. 7	S	12:30-2 p.m.	\$85
Lincoln, LUXC, Ceramic Bldg		LLLX-1212-OCFB	
Nov. 14-Dec. 12	S	12:30-2 p.m.	\$85
Lincoln, LUXC, Ceramic Bldg		LLLX-1212-OCFC	



## Pottery Wheel

For beginning students, this is an introduction to the fundamentals of the pottery wheel. For more advanced students, this is an opportunity to hone their skills.

All clay, glazes, tools, and firing provided.

<b>Keyword: Pottery</b>			
Sept. 1-22	T	6:30-9 p.m.	\$150
Lincoln, LUXC, Ceramic Bldg		LLLX-0269-OCFA	
Sept. 19-Oct. 10	S	9-11:30 a.m.	\$150
Lincoln, LUXC, Ceramic Bldg		LLLX-0269-OCFB	
Sept. 29-Oct. 27	T	6:30-9 p.m.	\$150
Lincoln, LUXC, Ceramic Bldg		LLLX-0269-OCFC	
Oct. 17-Nov. 7	S	9-11:30 a.m.	\$150
Lincoln, LUXC, Ceramic Bldg		LLLX-0269-OCFD	
Oct. 27-Nov. 17	T	6:30-9 p.m.	\$150
Lincoln, LUXC, Ceramic Bldg		LLLX-0269-OCFE	
Nov. 14-Dec. 12	S	9-11:30 a.m.	\$150
Lincoln, LUXC, Ceramic Bldg		LLLX-0269-OCFF	
Nov. 24-Dec. 15	T	6:30-9 p.m.	\$150
Lincoln, LUXC, Ceramic Bldg		LLLX-0269-OCFG	

## Create with Clay

Discover the fundamentals of hand building pots and sculptures with clay for beginning students, and allow more advanced students time to hone their skills. Hand building techniques you could do at home will be the focus.

Pottery wheel will not be covered. All clay, glazes, tools, and firing provided.

<b>Keyword: Clay</b>			
Sept. 3-24	Th	6:30-9 p.m.	\$125
Lincoln, LUXC, Ceramic Bldg		LLLX-1274-OCFA	
Oct. 1-22	Th	6:30-9 p.m.	\$125
Lincoln, LUXC, Ceramic Bldg		LLLX-1274-OCFB	
Oct. 29-Nov. 19	Th	6:30-9 p.m.	\$125
Lincoln, LUXC, Ceramic Bldg		LLLX-1274-OCFC	



## Tobacco Basket Floral

Tobacco baskets were originally used to display tobacco when taken to market, however they are the hot decorator item right now. This 12-inch by 12-inch basket is just the right size for table or door.

Bring to class: wire cutters, hot glue gun and glue sticks

<b>Keyword: Floral</b>			
Nov. 3	T	6-8 p.m.	\$59
Lincoln, CEC, 102		Miller	LLLX-0032-CEFA

## Clay Sculpture

This is an introduction for beginning students to the fundamentals of building large sculptures out of clay. More advanced students will have time to hone their own style and skills. The instructor specializes in portraiture and figurative sculpture. However, students can make sculptures of all kinds.

All clay, glazes, tools, and firing provided. Students also have access to the LUX Center for the Arts studio during open hours throughout this class.

<b>Keyword: Clay</b>			
Sept. 30-Nov. 4	W	6:30-9 p.m.	\$185
Lincoln, LUXC, Ceramic Bldg		LLLX-0049-OCFA	
Nov. 11-Dec. 16	W	6:30-9 p.m.	\$185
Lincoln, LUXC, Ceramic Bldg		LLLX-0049-OCFB	

## Location Key

Lincoln, CEC .....Jack J. Huck Continuing Education Center,  
301 S. 68th St. Place  
Lincoln, LUXC.....Lux Center for the Arts, 2601 N. 48th St.  
(Enter through the glass door on the west side of building off parking lot.) NOTE: Ceramics classes are in the building directly west of the Lux Center. Look for the lime green yard sign.  
Lincoln, VWSP.....Vang Wood Shop, 6700 Francis St.

For more information, contact us at  
800-828-0072 or [continuing@southeast.edu](mailto:continuing@southeast.edu)



### Nebraska “N” Glass Window Painting

It's almost game time Husker fans! Now you can create your very own Nebraska “N” painted window to show your spirit! On an old, used window, we will paint a red “N,” outlined in white and black. Also, make your creation unique by adding polka dots or stripes! Why not make this window and sign up for the football class on page 43. You'll be all set for Husker kickoff.

Don't have an old window? We do! Bring to class: 1/4-inch and 1-inch paint brushes, small paint scraper, Scotch tape, and a hair dryer. Wear paint clothes. There is a \$20 fee which includes fully prepped window with hanging kit. Supply fee paid to the instructor in class. Cash or check only for supplies.

Aug. 29	S	9:30 a.m.-Noon	<b>Keyword: Glass</b>
Lincoln, CEC, 102	Leonard	LLLX-0195-CEFA	\$19

### Colored Pencil Drawing

Discover the fun and fascination of drawing with colored pencil.

**Beginning students** are guided through exercises designed to grasp the basics of colored pencil techniques. The class will discuss differences in quality and grade of pencils and papers for drawing with colored pencil and will review the elements of drawing and composition.

**Experienced students** may bring a CP project in progress to the first class. They also may choose to explore mixed media with colored pencils.

Each student should bring a set of 12 or more quality colored pencils (e.g. Prismacolor Premier, Ticonderoga, Derwent, or Van Gough), a colorless blending pencil, pencil sharpener and a tablet of medium to heavy weight drawing paper at least 9 inches by 12 inches. Additional materials discussed in class.

Oct. 10-Nov. 14	S	11:30 a.m.-1 p.m.	<b>Keyword: Drawing</b>
Lincoln, CEC, 405	Plants	LLLX-0775-CEFA	\$80

### Drawing Explorations

IF you are an intermediate or advanced artist, explore techniques and processes. Each week we will delve into selected drawing techniques intended to further your individual skills and knowledge of drawing practices. Class will include discussion, demonstrations and exchange of ideas.

Bring to class a bound sketchbook (8 inches by 10 inches or 9 inches by 12 inches), drawing pencils ranging from soft to HB, charcoal pencils, blending stumps, erasers (vinyl and kneaded) to the first class. Additional tools and supplies will be discussed at class. NOTE: No class Nov. 28.

Oct. 10-Dec. 5	S	10-11:30 a.m.	<b>Keyword: Drawing</b>
Lincoln, CEC, 405	Plants	LLLX-1176-CEFA	\$90

#### Location Key

Lincoln, CEC .....Jack J. Huck Continuing Education Center, 301 S. 68th St. Place

Lincoln, LUXC.....Lux Center for the Arts, 2601 N. 48th St.

*(Enter through the glass door on the west side of building off parking lot.) NOTE: Ceramics classes are in the building directly west of the Lux Center. Look for the lime green yard sign.*

### Drawing 1: You Can Draw

If you want to draw, you can! Learn to put what you see onto paper. Exercises are designed to help you draw, or draw better, and grasp essential skills and techniques to achieve your desired results.

Bring a #2 pencil, pencil sharpener and a pad of drawing paper to the first class.

Oct. 10-Nov. 14	S	8:30-10 a.m.	<b>Keyword: Drawing</b>
Lincoln, CEC, 405	Plants	LLLX-0612-CEFA	\$80

### Portrait Painting Workshop

Class will explore the basic structure and anatomy of the face, head and body; discuss the purposes for portraiture; developing portraits ala prima completing; and complete several practice studies from live models.

Bring to class: 6-8 canvases 12 inches by 18 inches or larger, your preferred painting medium and essential supplies.

Oct. 3	S	9 a.m.-2 p.m.	<b>Keyword: Painting</b>
Lincoln CEC, 405	Plants	LLLX-1083-CEFA	\$59

### Oil Painting Lab

Receive individual instruction for traditional oil paints for beginning, intermediate or advanced students.

**Beginning students** should bring several blank canvases (9 inch by 12 inch or larger), and a basic kit of oil paints, oil painting medium, low-odor thinner, and brushes. A suggested basic kit list may be obtained by contacting the Continuing Education Office (402-437-2700).

**Intermediate and advanced painters** may choose to bring oil paintings in progress to work on at the first studio session.

All students should bring table top or floor easel and come to the first class ready to begin painting.

Oct. 10-Dec. 5	S	1-4 p.m.	<b>Keyword: Painting</b>
Lincoln, CEC, 405	Plants	LLLX-1335-CEFA	\$90

### Acrylic Class (Beginning/Intermediate)

Let the LUX Center for the Arts introduce beginning students to the fundamentals of painting with acrylics. Advanced students time to develop their skills.

All paints, brushes and materials provided.

Sept. 1-22	T	6:30-9 p.m.	<b>Keyword: Acrylic</b>
Lincoln, LUXC		LLLX-1039-OCFA	\$125
Sept. 29-Oct. 20	T	6:30-9 p.m.	\$125
Lincoln, LUXC		LLLX-1039-OCFB	
Oct. 27-Nov. 17	T	6:30-9 p.m.	\$125
Lincoln, LUXC		LLLX-1039-OCFC	
Nov. 24-Dec. 15	T	6:30-9 p.m.	\$125
Lincoln, LUXC		LLLX-1039-OCFDv	



[www.ed2go.com/scne](http://www.ed2go.com/scne)

### BROWSE COURSES IN

**Accounting and Finance  
Business**

**College Readiness  
Computer Applications  
Design and Composition  
Health Care and Medical**

**Language and Arts  
Law and Legal**

**Personal Development  
Teaching and Education  
Technology  
Writing and Publishing**

For more information, contact us at  
800-828-0072 or [continuinged@southeast.edu](mailto:continuinged@southeast.edu)

**Cancellation/Refund Policy:** You must call the Continuing Education office at 402-437-2700 or 800-828-0072 the day before the class begins to receive a 100% refund. If you call the day of the class or after it has started, no refund will be issued. If a class is cancelled or student drops (according to the refund policy), refunds will be issued to the student, unless a third party has been formally billed by SCC Business Office. **ADA Reasonable Accommodations:** SCC provides services and reasonable accommodations to allow persons with disabilities to participate in educational programs and other College activities. For information on requesting ADA reasonable accommodations, contact the SCC Area Access/Equity/Diversity Office.



## BOB ROSS PAINTING

Bob Ross classes are for painters of all abilities, including beginners. Classes are offered live online via zoom or face to face depending on each painting, and taught by Certified Bob Ross instructors.

For classes offered **LIVE Online via Zoom** you will be emailed a supply list that you will need to purchase prior to the class. Plan on downloading the Zoom app to your tablet, laptop or desktop prior to class and then paint from your own home. It is recommended to register early so you can get your supply list in plenty of time.

For **face-to-face classes**, you will purchase in class the supplies needed to complete your painting that you will create in a classroom setting. Supply fee for face-to-face classes is \$33 in cash payable in class. You will leave class with your completed painting.

### Bob Ross Painting: Golden Rays of Sunlight



The start of autumn colors, fallen leaves, barren trees, with sunlight peeking through the dense forest with the hint of winter on the way.

**Keyword: Ross**

Nov. 14	S	9:30 a.m.-3:30 p.m.	\$45
LIVE Online, Zoom	Belik	AREA-7830-TCFA	



### Bob Ross: Mountain at Sunset

A graceful mountain is the background for a lake surrounded by fall-colored bushes and birch trees.

A sack lunch and beverage are recommended.

**Keyword: Ross**

Sept. 12	S	9 a.m.-3:30 p.m.	\$45
Lincoln, CEC, 102	Rodeman	LLLX-1067-CEFA	



### Bob Ross: Blood Moon

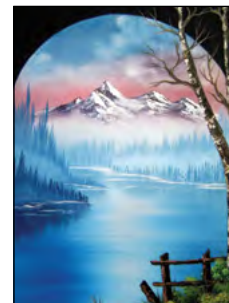
A beautiful glowing red moon appears in a starry sky.

**Keyword: Ross**

Oct. 17	S	9:30 a.m.-3:30 p.m.	\$45
LIVE Online, Zoom	Belik	LLLX-1067-TCFB	



### Bob Ross: Mountain View



A striking oval tip and black border frames this painting on black canvas. A peaceful scene where part of the picture extends onto the border for a lovely effect.

A sack lunch and beverage are recommended.

**Keyword: Ross**

Nov. 21	S	9 a.m.-3:30 p.m.	\$45
Lincoln, CEC, 102	Rodeman	LLLX-1067-CEFD	



### Bob Ross: Golden Sunset

A gorgeous sunset behind lovely fall trees with a small lake and new fallen snow.

A sack lunch and beverage are recommended.

**Keyword: Ross**

Oct. 17	S	9 a.m.-3:30 p.m.	\$45
Lincoln, CEC, 102	Rodeman	LLLX-1067-CEFC	



### Bob Ross: Desert Aglow

A colorful sunset glows against a southwestern desert landscape.

**Keyword: Ross**

Oct. 31	S	9:30 a.m.-3:30 p.m.	\$45
LIVE Online, Zoom	Belik	BBBX-1362-TCFA	



### Bob Ross: Evening Tide

A full moon sheds light on a secluded beach at high tide.

**Keyword: Ross**

Dec. 12	S	9:30 a.m.-3:30 p.m.	\$45
LIVE Online, Zoom	Belik	AREA-7830-TCFB	



**We're Keeping You Safe**  
For COVID-19 updates, visit  
[www.southeast.edu/covid-19](http://www.southeast.edu/covid-19)

For more information, contact us at  
800-828-0072 or [continuinged@southeast.edu](mailto:continuinged@southeast.edu)

#### Location Key

Lincoln, CEC ..... Jack J. Huck Continuing Education Center,  
301 S. 68th St. Place

For your convenience, we are offering LIVE Online learning opportunities. These classes are delivered live via Zoom. They are not prerecorded videos. This allows you, the student, to participate from the comfort of your home. Look for the LIVE Online logo shown to the left to find these classes. As our learning environment changes, we look forward to offering additional classes live online.

Have an idea for a class that could be offered live online? Please submit your idea at <https://bit.ly/scceonlinecourses>.

## GLASS CRAFTING

### Stained Glass Terrariums

Learn to construct a three-dimensional geometric glass terrarium to hang in a window or sit on your desk. Choose from various available patterns.

Tools and materials included in cost.

**Keyword: Glass**

Sept. 26-Oct. 17 Lincoln, ARCH	S Scott	10 a.m.-Noon LLLX-0196-OCFA	\$75
-----------------------------------	------------	--------------------------------	------

### Mosaic Serving Tray

Learn to create mosaic while making a gorgeous functional mosaic tray approximately 12 inches by 18 inches. You can create your own pattern or choose a design provided in class. Discover tips for cutting glass to create tiles, how to lay your tiles to accentuate your design, grouting, and finishing!

Cost includes use of tools and scrap glass. If desired, you may purchase sheet glass in class. \$30 fee payable at the first class for the tray and substrate. Check or cash only for supplies.

**Keyword: Tray**

Oct. 8-Nov. 5 Lincoln, ARCH	Th Scott	6-8 p.m. LLLX-0282-OCFA	\$110
--------------------------------	-------------	----------------------------	-------

### Paint Pouring on Glass

Have you tried the acrylic paint pour technique that has taken over the nation? Why not try it on glass?!? We have special paints that get fired in the kiln to become permanent pieces of artwork that you can frame for display, or cut up to include in mosaics, stained glass or fusing projects.

**Keyword: Paint**

Aug. 27 Lincoln, ARCH	Th	6-8 p.m. LLLX-0213-OCFA	\$35
--------------------------	----	----------------------------	------

### Fused Glass Serving Platter

Make your own fused glass patterns for entertaining! We will make a matching set of two dishes, one for serving and one for dipping.

**Keyword: Glass**

Aug. 29 & Sept. 5 Lincoln, ARCH	S	10 a.m.-Noon LLLX-0198-OCFA	\$65
------------------------------------	---	--------------------------------	------

### Nebraska "N" Glass Window Painting

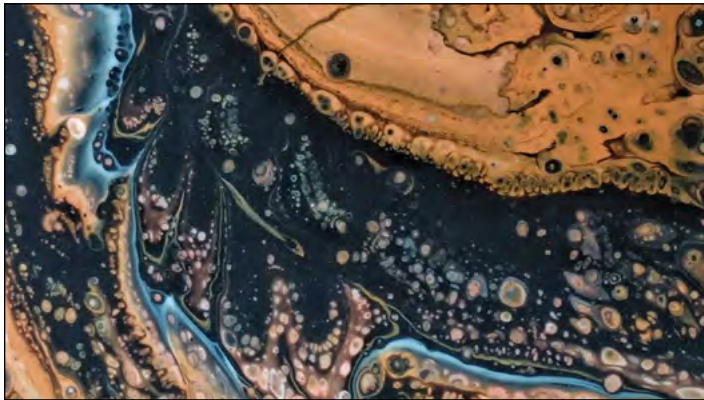
It's almost game time Husker fans! Now you can create your very own Nebraska "N" painted window to show your spirit! On an old, used window, we will paint a red "N," outlined in white and black. Also, make your creation unique by adding polka dots or stripes! Why not make this window and sign up for the football class on page 43. You'll be all set for Husker kickoff.



Don't have an old window? We do! Bring to class: 1/4-inch and 1-inch paint brushes, small paint scraper, Scotch tape, and a hair dryer. Wear paint clothes. There is a \$20 fee which includes fully prepped window with hanging kit. Supply fee paid to the instructor in class. Cash or check only for supplies.

**Keyword: Glass**

Aug. 29 Lincoln, CEC, 102	S Leonard	9:30 a.m.-Noon LLLX-0195-CEFA	\$19
------------------------------	--------------	----------------------------------	------



### Acrylic Fluid Art

Learn more than 16 techniques of acrylic fluid art! You have seen this abstract form of art on social media, now learn how to get the cells to pop! It is not as messy as it sounds but do wear painting clothes to class. Watch a demonstration of each technique and then it is your turn to have some fun.

All supplies are provided, but you will need to bring cardboard to transport your two 10-inch by 11-inch boards home.

**Keyword: Acrylic**

Oct. 28 Lincoln, CEC, 102	W Mapel	3-5 p.m. LLLX-0187-CEFA	\$49
------------------------------	------------	----------------------------	------

### Woven Paper Collage

What you end up with isn't what you start out with. Curious? Join this unique art experience where you will create a small woven paper collage. There are no rules. You will be using a tried and true art technique, and you will need to deconstruct before you can reconstruct. Still curious? Come and join the fun!

Bring to class: scissors, ruler, and if you have them, a set of watercolors and brush. Any kind of watercolors from youth set to artist level. If you don't have any watercolors, we will provide for class use.

**Keyword: Collage**

Nov. 10 Lincoln, CEC, 102	T Miller	6-8 p.m. LLLX-0030-CEFA	\$25
------------------------------	-------------	----------------------------	------

### Watercolor Painting

Beginning watercolor students will be introduced to the fundamentals of painting with watercolors and allow more advanced students time to hone their skills.

All paints, brushes and materials provided.

**Keyword: Watercolor**

Sept. 3-24 Lincoln, LUXC	Th	6:30-9 p.m. LLLX-1260-OCFB	\$125
Oct. 1-22 Lincoln, LUXC	Th	6:30-9 p.m. LLLX-1260-OCFC	\$125
Oct. 29-Nov. 19 Lincoln, LUXC	Th	6:30-9 p.m. LLLX-1260-OCFD	\$125

### Location Key

Lincoln, ARCH.....Architectural GlassArts, 4035 S. 48th St.  
Lincoln, CEC.....Jack J. Huck Continuing Education Center,  
301 S. 68th St. Place  
Lincoln, LUXC.....Lux Center for the Arts, 2601 N. 48th St.  
(Enter through the glass door on the west side of building off parking lot.) NOTE: Ceramics classes are in the building directly west of the Lux Center. Look for the lime green yard sign.

For more information, contact us at  
800-828-0072 or [continuing@southeast.edu](mailto:continuing@southeast.edu)



For your convenience, we are offering LIVE Online learning opportunities. These classes are delivered live via Zoom. They are not prerecorded videos. This allows you, the student, to participate from the comfort of your home. Look for the LIVE Online logo shown to the left to find these classes. As our learning environment changes, we look forward to offering additional classes live online.

Have an idea for a class that could be offered live online? Please submit your idea at <https://bit.ly/sccconlinecourses>.

## JEWELRY

### Metalsmithing

Class is intended for those who have taken a metalsmithing course before and want to expand their ability to shape, form and fuse metal. Students can work on self-directed projects with instructor guidance.

Basic supplies and tools are provided.

Oct. 13-Nov. 3	T	6:30-9 p.m.	\$150
Lincoln, LUXC		LLLX-0271-OCFA	

**Keyword: Metalsmithing**

### Lost Wax Casting

Create your own small jewelry or art piece cast in sterling silver. No prior metalsmithing experience is needed.

All supplies and tools provided.

Sept. 8-29	T	6:30-9 p.m.	\$150
Lincoln, LUXC		LLLX-0272-OCFA	

**Keyword: Casting**

## NEEDLE ARTS & SEWING

### Crooked Star Wall Hanging

Try something different this spring! Forget about 1/4-inch seams and templates. You'll have fun while you create a funky star wall-hanging or table topper. If desired, after class, make more blocks at home to create a full-size quilt. Approximate 36-inch square.

Bring sewing machine, basic sewing supplies, extension cord, rotary cutter, ruler, and mat. Purchase the fabric kit in class for \$25. Check or cash only for supplies.

Nov. 10 & 17	T	6:30-9 p.m.	\$49
Lincoln, CEC, 102	O'Hare	LLLX-1375-CEFA	

**Keyword: Star**

### Machine Quilting

Do you like making quilts but don't have time to hand quilt? This is the beginning machine quilt class for you. We will experiment with multiple machine quilting techniques and discuss battings and various marking methods.

Bring sewing machine and sewing machine instruction book as well as sewing supplies. A walking foot (straight line quilting) and a quilting or darning foot (free motion quilting) is essential. Supplies for first class will be \$8. For the second class bring a small wall quilt or baby quilt and we will plan and BEGIN to quilt your top.

Dec. 2 & 9	W	6:30-9 p.m.	\$35
Lincoln, CEC, 102	O'Hare	LLLX-1494-CEFA	

**Keyword: Quilt**

### Location Key

Lincoln, ARCH.....Architectural GlassArts, 4035 S. 48th St.  
Lincoln, CEC.....Jack J. Huck Continuing Education Center,  
301 S. 68th St. Place  
Lincoln, LUXC.....Lux Center for the Arts, 2601 N. 48th St.  
(Enter through the glass door on the west side of building off parking lot.) NOTE: Ceramics classes are in the building directly west of the Lux Center. Look for the lime green yard sign.

For more information, contact us at  
800-828-0072 or [continuing@southeast.edu](mailto:continuing@southeast.edu)

## English Smocking

Discover the beautiful world of smocking! You, too, can create beautiful smocked designs just like those on Princess Charlotte's dresses or create a beautiful holiday ornament. This is elegant but simple-to-do needlework. Cable, trellis and wave stitches will be covered, as well as professional smocking advice for future projects.

Bring to class scissors or thread snips. Class project will be an ornament.

Oct. 14-28	W	7-8:30 p.m.	\$39
Lincoln, CEC, 403	Prairie Smockers	LLLX-1006-CEFA	

**Keyword: Smocking**

## Magic Ballz

Magic ballz, what fun! This crazy style is fun and easy to sew. Stress free piecing is the name of the game. Fun round shapes, interesting borders make this 36-inch by 36-inch wall-hanging unique. These will be bright and cheery colors that will make you smile.

Kit purchased in class for the 57-inch by 57-inch quilt for \$45. Bring to class: sewing machine, extension cord, basic sewing supplies, rotary cutter, ruler, and mat.

Oct. 12 & 19	M	6:30-9 p.m.	\$45
Lincoln, CEC, 102	O'Hare	LLLX-1264-CEFA	

**Keyword: Magic**

## Introduction to Needlepoint

Needlepoint is one of the easiest decorative stitching skills to learn. Join us for an afternoon of fun and learn four basic stitches and two special-effect stitches.

Your kit will be waiting for you when you arrive at class. All you need to bring is a sharp scissors or thread snip and a brown bag lunch.

Oct. 20	T	9 a.m.-2 p.m.	\$29
Lincoln, CEC, 405	Plants	LLLX-0923-CEFA	

**Keyword: Needlepoint**

## Beginning Knitting

Knit one, purl two. Learn the basic knitting stitches (knit, purl, cast on/off) to get you started in this traditional needle art. You will leave class with enough technique to be able to create your own scarf or small project.

Bring to class: size 7 straight knitting needles and two skeins of sugar and cream cotton yarn (same or different colors, your choice).

Oct. 30-Nov. 13	F	6-8 p.m.	\$29
Lincoln, CEC, 403	Roseberry	LLLX-0512-CEFA	

**Keyword: Knitting**

## Learn to Crochet

Get started in crochet! Learn how to read patterns, begin a foundation and the basic stitches to begin your crochet adventure.

Bring to class a pair of scissors, skein of worsted weight cotton yarn (such as Sugar and Cream) and a size I or J crochet hook.

Oct. 3-17	S	9-11 a.m.	\$29
LIVE Online, Zoom	Roseberry	LLLX-1481-TCFA	

**Keyword: Crochet**



For your convenience, we are offering LIVE Online learning opportunities. These classes are delivered live via Zoom. They are not prerecorded videos. This allows you, the student, to participate from the comfort of your home. Look for the LIVE Online logo shown to the left to find these classes. As our learning environment changes, we look forward to offering additional classes live online.

Have an idea for a class that could be offered live online? Please submit your idea at <https://bit.ly/scceonlinecourses>.

Check out all classes offered at [www.southeast.edu/continuing](http://www.southeast.edu/continuing)  
Find us on Facebook® at [www.facebook.com/SCCnebCE](http://www.facebook.com/SCCnebCE)





# REGISTER ONLINE

You must have an email account to register online.

- Go to <http://bit.ly/RegisterCE>
- Search for your class** by entering a **key word** in the title or the **course number**. Click **Submit**. (Enter information in only one field for broader results.)  
Key Word Example: *Driver*  
Course Number Example: *TRAN-3398*
- Select the course** for which you wish to register. Click **Submit**.
- Enter your **personal information, certify your identification** and click **Submit**.  
\* You must provide your Social Security Number.
- Optional:** Enter your **Additional Registration Information** and click **Submit**.

- If you want to register for additional classes, select **Search for more classes** under "Choose one of the following." If you are finished selecting the class(es) for which you want to register, select **Register now (check out)**. Select your **Payment Type**. Click **Submit**.
- Enter your **payment information**. Click **Submit**.

You will see your **class acknowledgement** with information about your **SCC Student ID Number, SCC User ID** and **password**. You also will receive an email with this same information for your records.

In the future it will be easy to register by logging in using your SCC User ID and password and it will not be necessary to provide your Social Security number again.

If you have problems getting registered, please call 402-437-2700 or 800-828-0072 for assistance.

\* The College requires a student's Social Security number as a condition for enrollment online. A student's Social Security number information constitutes an "educational record" under FERPA.

## OR REGISTER BY MAIL, FAX OR IN PERSON



### Registration Form - Non-Credit Course

Today's Date

Complete this form with payment information and send via mail to Southeast Community College, Continuing Education, 301 S. 68th St. Place, Lincoln, NE 68510 OR FAX to 402-437-2703

PLEASE PRINT

The College requests, but does not require, a student provide their Social Security number during the admissions process. Visit [www.southeast.edu/collegecatalog](http://www.southeast.edu/collegecatalog) for additional information.

Social Security Number OR SCC Student ID Number		Birth Date	Name: Last		First	Middle Initial
Residence Mailing Address			City	State	Zip	County #
Email Address			Cell Phone	<input type="checkbox"/> Home <input type="checkbox"/> Business Phone		
I identify as: <input type="checkbox"/> Male <input type="checkbox"/> Female	<input type="checkbox"/> Nebraska Resident <input type="checkbox"/> Non-Resident	Ethnicity (select one): <input type="checkbox"/> Hispanic or Latino <input type="checkbox"/> Not Hispanic or Latino		Race (Select one or more): <input type="checkbox"/> White <input type="checkbox"/> Asian <input type="checkbox"/> Native Hawaiian/Other Pacific Islander <input type="checkbox"/> American Indian/Alaska Native <input type="checkbox"/> Black/African-American		

COURSE NUMBER	TITLE	START DATE	COST
-	-	-	\$
-	-	-	\$
-	-	-	\$
-	-	-	\$

#### SIGNATURE

Check  Cash  Mastercard  AMEX  Discover  VISA V Code \_\_\_\_\_

Name as it appears on card: \_\_\_\_\_

Exp. Date \_\_\_\_\_ CC # \_\_\_\_\_

Billing agency (INCLUDE LETTER OF AUTHORIZATION ON COMPANY LETTERHEAD)

For the protection of your personal credit card information, do not email this form to SCC. If faxing, only use the fax number listed or verify with SCC before using another SCC fax number.

Would you like a receipt mailed to you?  
 Yes  No

SCC Staff Tuition Waiver ( )

**TOTAL DUE**

FOR OFFICE USE ONLY

ID# \_\_\_\_\_

DE \_\_\_\_\_

Submission of this form indicates that I understand: 1) that my registration is complete and that I am accountable for the tuition and fees and subject to a grade in the courses listed; 2) that should I officially drop, cancel, or withdraw, any refund in tuition will be determined by the date I submit my request to Continuing Education; 3) that failure to attend a course does not constitute an official drop/withdrawal; 4) the personal information contained herein is correct as shown; and 5) any changes in SSN, legal name, address, residency, etc. must follow the College procedures in the Student Handbook and College Catalog. It is the policy of SCC to provide equal opportunity and nondiscrimination in all admission, attendance, and employment matters to all persons without regard to race, color, religion, sex, age, marital status, national origin, ethnicity, veteran status, sexual orientation, disability, or other factors prohibited by law or College policy. Inquiries concerning the application of SCC's policies on equal opportunity and nondiscrimination should be directed to the Vice President for Access/Equity/Diversity, SCC Area Office, 301 S. 68th St. Place, Lincoln, NE 68510, or [jsoto@southeast.edu](mailto:jsoto@southeast.edu).

301 S. 68th St. Place, Lincoln, NE 68510  
402-437-2700 • 800-828-0072 • FAX 402-437-2703  
[www.southeast.edu/continuing](http://www.southeast.edu/continuing)

