

Arts, Crafts & Hobbies

Summer 2022



Working with Resin

Epoxy resin can be used for many different purposes. The clear epoxy turns from a liquid to a solid and makes magical works of art. We will learn how to safely work with the resin to create beautiful pendants and key chains with embedded botanicals, glitter and gems.



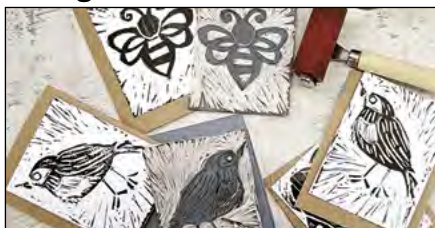
Keyword: Resin

Aug. 14	U	2-4 p.m.	\$35
Louisville, SHSH	Wolcott	AREA-2186-PLUA	
Aug. 15	M	6:30-8:30 p.m.	\$35
LIVE Online, Zoom	Wolcott	AREA-2186-TCUPA	

A supply list will be emailed one week prior to class.

NEW! Intro to Block Printing

Create a set of six hand-printed greeting cards using the single-color block print method. Design, carve and print your images to create unique and lovely greeting cards.



You will have your block to take home and be able to print more.

Keyword: Block

Aug. 28	U	2-4 p.m.	\$35
Louisville, SHSH	Wolcott	AREA-2199-PLFA	

Shibori Dying

Make beautiful patterns on fabric to create pillows for your home. We will learn how to dye fabric using indigo ink along with a few techniques to create a variety of patterns.

A supply list will be emailed one week prior to class.

Keyword: Shibori

July 17	U	2-4 p.m.	\$45
Louisville, SHSH	Wolcott	AREA-2171-PLUA	



These classes are delivered live via Zoom, not prerecorded videos. This allows you, the student, to participate from the comfort of your home. As our learning environment changes, we look forward to offering additional classes live online.

Have an idea for a class that could be offered live online? Please submit your idea at <https://bit.ly/scceonlinecourses>.

Want to take a class that is listed as "LIVE Online, Zoom" but don't have a way to view the class or are having connection issues? Contact your Learning Center to see if other options are available.

For more information, contact **Lyn Belitz** at 800-828-0072, ext. 2298, or lbelitz@southeast.edu

Scrapbook Retreat

Grab your friend and your photos and let's preserve those memories! Learn traditional layouts or digital scrapbooking. We'll do it together!

Bring the project you would like to work on. Vendors will be available. The full retreat is held Friday and Saturday from 9 a.m.-11 p.m. and Sunday from 9 a.m.-4 p.m.

Keyword: Scrapbook

Full Retreat

Sept. 9-11	F, S, U	See Desc.	\$65
Plattsmouth, PLLC, 103	Warga	AREA-3373-PLFA	

7-Hour Session Options

Sept. 9	F	9 a.m.-4 p.m.	\$15
Plattsmouth, PLLC, 103	Warga	AREA-3308-PLFA	
Sept. 9	F	4-11 p.m.	\$15
Plattsmouth, PLLC, 103	Warga	AREA-3308-PLFB	
Sept. 10	S	9 a.m.-4 p.m.	\$15
Plattsmouth, PLLC, 103	Warga	AREA-3308-PLFC	
Sept. 10	S	4-11 p.m.	\$15
Plattsmouth, PLLC, 103	Warga	AREA-3308-PLFD	
Sept. 11	U	9 a.m.-4 p.m.	\$15
Plattsmouth, PLLC, 103	Warga	AREA-3308-PLFE	

Scrapbook Workshop

Enjoy the evening scrapbooking with others. Invite a friend and bring your project with you or ask instructor for supplies.

New-student instruction will be available from 5-6 p.m. (digital or traditional) before each workshop.

Keyword: Scrapbook

July 11	M	5-10 p.m.	\$10
Plattsmouth, PLLC, 103	Warga	AREA-3268-PLUA	
Aug. 1	M	5-10 p.m.	\$10
Plattsmouth, PLLC, 103	Warga	AREA-3268-PLUB	



Old Fashioned Soap Making

Discover how to make healthy handmade soap from scratch. You will learn basic soap making process and the chemistry behind it and how to make soap safely. We will cover everything you need to know about soap making, including supplies and ingredients.

Bring safety goggles. There is a \$10 fee associated with

this course payable in class. Check or cash only for supplies.

Keyword: Soap

Aug. 7	U	2-5 p.m.	\$55
Louisville, SHSH	Wolcott	AREA-5725-PLUB	

Location Key

Louisville, SHSH.... Simply Home Sweet Home Studio, 8980 Raven Drive
(Class location is rural, rural, three miles from Hwy 66)
Plattsmouth, PLLC..... Learning Center at Plattsmouth, 537 Main St.

Creating Pottery Luminaries

Using hand-building pottery methods, make luminaries out of clay.

Final projects will be fired and glazed with pick-up arranged by the instructor. There is a fee of \$10 payable to the instructor. Check or cash only for supplies.

Keyword: Pottery

Aug. 21	U	2-4 p.m.	\$45
Louisville, SHSH	Wolcott	AREA-6070-PLUA	



Create Your Own O' Great Pumpkin! with String Art

Show your love of fall by creating this festive string art pumpkin, a perfect addition to your autumn décor. String art is the weaving of colored string between hammered nails to create curved, geometric patterns.



A supply list will be emailed one week prior to class.

Keyword: Pumpkin

Aug. 5	F	6-9 p.m.	\$29
LIVE Online, Zoom	Roseberry	AREA-2659-TCUWA	

Handmade Greeting Cards

Do you want to create fabulous cards without buying a ton of new materials? Get inspired as we create six new cards with techniques that will spice up your favorite supplies. These are all NEW cards from previous classes.



Suggested supplies include: glue dots, tape runners or double-sided tape, pop dots, scissors, glue pen, and piercing tool.

Keyword: Cards

Aug. 2	T	6-8 p.m.	\$36
LIVE Online, Zoom	Van Winkle		
Registration Deadline: July 22 LLLX-0029-TCUCB			
Sept. 27	T	6-8 p.m.	\$36
LIVE Online, Zoom	Van Winkle		
Registration Deadline: Sept. 19 LLLX-0029-TCFCA			

Watercolor Quilts

Duplicate the textures and patterns of vintage fabric in watercolor! These beautiful pieces can be transformed in to greeting cards or can remain as a piece of art.

A supply list will be sent prior to class.

Keyword: Watercolor

July 18	M	6:30-8:30 p.m.	\$29
LIVE Online, Zoom	Wolcott	AREA-2185-TCUPA	



These classes are delivered live via Zoom, not prerecorded videos. This allows you, the student, to participate from the comfort of your home. As our learning environment changes, we look forward to offering additional classes live online.

Have an idea for a class that could be offered live online? Please submit your idea at <https://bit.ly/scceonlinecourses>.

Want to take a class that is listed as "LIVE Online, Zoom" but don't have a way to view the class or are having connection issues? Contact your Learning Center to see if other options are available.

BOB ROSS PAINTINGS

Bob Ross classes are for painters of all abilities and are taught by Certified Bob Ross instructors. Classes are currently offered via Zoom or in person depending on location. For Zoom classes, you will purchase supplies on your own prior to class. Supply lists will be sent to you via email so register early and be sure to include your email. In person classes will purchase the supplies needed to complete their painting in class. You will end class with a completed painting. Frames are not included.

Bob Ross: Indian Summer

Reddish-gold tones are captured in this forest scene.



Keyword: Ross

July 9	S	10 a.m.-4 p.m.	\$45
LIVE Online, Zoom	Belik	LLLX-1067-TCUCA	



Bob Ross: Mount Fuji

Mount Fuji overlooks a grove of cherry trees in full bloom.



If you would like to take this class via Zoom from the Learning Center at Nebraska City, call 402-323-3636 to make arrangements.

Keyword: Ross

Aug. 20	S	10 a.m.-4 p.m.	\$45
LIVE Online, Zoom	Belik	AREA-7830-TCUNA	

Bob Ross: Royal Majesty

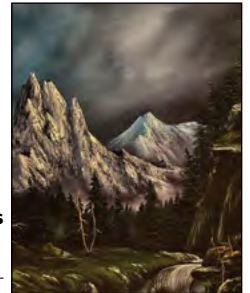
A waterfall cascades down a mountain stream.



If you would like to take this class via Zoom from the Learning Center at Plattsmouth, call 402-437-2298 to make arrangements.

Keyword: Ross

Sept. 10	S	10 a.m.-4 p.m.	\$45
LIVE Online, Zoom	Belik	AREA-7830-TCFPA	



Acrylic Painting: Sunflower

These 12-inch by 16-inch textured sunflowers celebrate the season and are sure to brighten up any room!



A supply list will be emailed one week prior to class.

Keyword: Acrylic

July 12	T	10 a.m.-Noon	\$24
LIVE Online, Zoom	Wolcott	AREA-7676-TCUPA	

Acrylic Painting: Impressionist Style

Brushstroke and balance of color bring your impressionist scene to life.



A supply list will be emailed prior to class.

Keyword: Acrylic

Aug. 29	M	6:30-8:30 p.m.	\$24
LIVE Online, Zoom	Wolcott	AREA-7676-TCUPB	

Location Key

Louisville, SHSH.... Simply Home Sweet Home Studio, 8980 Raven Drive
(Class location is rural, rural, three miles from Hwy 66)
Plattsmouth, PLLC..... Learning Center at Plattsmouth, 537 Main St.

Impasto Floral Painting

Impasto is a technique where paint is laid on thick and in layers. The beauty is in the rich visible brush strokes. When the painting is dry, it is full of so much texture that it appears to be coming out of the canvas.

A supply list will be sent prior to class.

Keyword: Painting

July 19	T	10 a.m.-Noon	\$35
Plattsmouth, PLLC, 103	Wolcott	AREA-8103-PLUA	
July 25	M	6:30-8:30 p.m.	\$35
LIVE Online, Zoom	Wolcott	AREA-8103-TCUPA	

Digitizing Memories

Do you have envelopes full of negatives and slides or boxes of photos? Discover how to preserve these in a more organized form by scanning them. We will look at scanning techniques and some of the devices to make scanning easy. Discussion will involve the software necessary to scan your negatives, slides and photos and look at the software "VueScan."

Keyword: Memories

Aug. 2-9	T	6:30-7:30 p.m.	\$29
LIVE Online, Zoom	Keller	LLLX-0113-TCUCA	

JEWELRY

NEW! Gelliprint Jewelry

Explore the world of gel printing with a twist. We will be using a variety of mediums along with the Gelli plate to create bracelets, earrings and pendants. Discover fabulous techniques to create one-of-a-kind works of art.

A supply list will be sent prior to class.

Keyword: Jewelry

July 11	M	6:30-8:30 p.m.	\$35
LIVE Online, Zoom	Wolcott	AREA-2299-TCUPA	

NEW! Recycled Beads

Create beautiful beads to add to handmade jewelry using recycled items. Three different styles of beads using a variety of materials so unique that you will be amazed at what you created!

Keyword: Beads

Sept. 25	U	2-4 p.m.	\$35
Louisville, SHSH	Wolcott	AREA-2300-PLFA	



Copper Etching

Etch your copper, add the patina, then design and create your own jewelry piece. Bracelet, necklace or earrings are your choices.

Keyword: Etching

Sept. 11	U	2-4 p.m.	\$39
Louisville, SHSH	Wolcott	AREA-2295-PLFA	
Sept. 12	M	6:30-8:30 p.m.	\$39
LIVE Online, Zoom	Wolcott	AREA-2295-TCFPA	
Sept. 18	U	2-4 p.m.	\$39
Plattsmouth, PLLC, 102	Wolcott	AREA-2295-PLFB	

NEEDLE ARTS & SEWING

Slow Stitching

Experience slow stitching using embroidery and composition stitches to mindfully create a new unique piece of art fabric using needle and thread. Discover this hot new trend using new and vintage materials.

Keyword: Stitching

July 31	U	2-4 p.m.	\$39
Louisville, SHSH	Wolcott	AREA-2617-PLUA	
Aug. 22	M	6:30-8:30 p.m.	\$39
LIVE Online, Zoom	Wolcott	AREA-2617-TCFPA	

A supply list will be emailed one week prior to class.

Corner to Corner Crochet

Prerequisite: Must know basic crochet stitches: chain, slip stitch and double crochet

Learn this fun, versatile crochet technique that is newly popular in the craft world! This technique makes fun wash cloths, towels, blankets, and more. You will learn the techniques, create a cute washcloth, and learn to design your own patterns.

Supply list will be sent by instructor before class begins.

Keyword: Crochet

July 25	M	6-9 p.m.	\$25
LIVE Online, Zoom	Roseberry	LLLX-1497-TCUCA	

Shibori Dying

Make beautiful patterns on fabric to create pillows for your home. We will learn how to dye fabric using indigo ink along with a few techniques to create a variety of patterns.

A supply list will be emailed one week prior to class.

Keyword: Shibori

July 17	U	2-4 p.m.	\$45
Louisville, SHSH	Wolcott	AREA-2171-PLUA	

Location Key

Louisville, SHSH.... Simply Home Sweet Home Studio, 8980 Raven Drive
(Class location is rural, rural, three miles from Hwy 66)
Plattsmouth, PLLC..... Learning Center at Plattsmouth, 537 Main St.

For more information, contact **Lyn Belitz** at 800-828-0072, ext. 2298, or lbelitz@southeast.edu



These classes are delivered live via Zoom, not prerecorded videos. This allows you, the student, to participate from the comfort of your home. As our learning environment changes, we look forward to offering additional classes live online.

Have an idea for a class that could be offered live online? Please submit your idea at <https://bit.ly/scceonlinecourses>.

Want to take a class that is listed as "LIVE Online, Zoom" but don't have a way to view the class or are having connection issues? Contact your Learning Center to see if other options are available.

Check out all classes offered at www.southeast.edu/PlattsmouthLC
Find us on Facebook® at www.facebook.com/SCCLearningCenteratPlattsmouth

Cancellation/Refund Policy: You must call the Continuing Education office at 402-437-2700 or 800-828-0072 the day before the class begins to receive a 100% refund. If you call the day of the class or after it has started, no refund will be issued. If a class is cancelled or student drops (according to the refund policy), refunds will be issued to the student, unless a third party has been formally billed by SCC Business Office. **ADA Reasonable Accommodations:** SCC provides services and reasonable accommodations to allow persons with disabilities to participate in educational programs and other College activities. For information on requesting ADA reasonable accommodations, contact the SCC Area Access/Equity/Diversity Office.



REGISTER ONLINE

You must have an email account to register online.

- Go to <http://bit.ly/RegisterCE>
- Search for your class** by entering a **key word** in the title or the **course number**. Click **Submit**. (Enter information in only one field for broader results.)
Key Word Example: *Driver*
Course Number Example: *TRAN-3398*
- Select the course** for which you wish to register. Click **Submit**.
- Enter your **personal information, certify your identification** and click **Submit**.
* You must provide your Social Security Number.
- Optional:** Enter your **Additional Registration Information** and click **Submit**.

- If you want to register for additional classes, select **Search for more classes** under "Choose one of the following." If you are finished selecting the class(es) for which you want to register, select **Register now (check out)**. Select your **Payment Type**. Click **Submit**.
- Enter your **payment information**. Click **Submit**.

You will see your **class acknowledgement** with information about your **SCC Student ID Number, SCC User ID** and **password**. **Print** this page for your records.

In the future it will be easy to register by logging in using your SCC User ID and password and it will not be necessary to provide your Social Security number again.

If you have problems getting registered, please call 402-437-2700 or 800-828-0072 for assistance.

* The College requires a student's Social Security number as a condition for enrollment online. A student's Social Security number information constitutes an "educational record" under FERPA.

OR REGISTER BY MAIL, FAX OR IN PERSON



Registration Form - Non-Credit Course

Today's Date

Complete this form with payment information and send via mail to Southeast Community College, Continuing Education, 301 S. 68th St. Place, Lincoln, NE 68510 OR FAX to 402-437-2703

PLEASE PRINT

The College requests, but does not require, a student provide their Social Security number during the admissions process. Visit www.southeast.edu/collegecatalog for additional information.

Social Security Number OR SCC Student ID Number	Birth Date	Name: Last	First	Middle Initial
Residence Mailing Address		City	State	Zip
Email Address		Cell Phone	<input type="checkbox"/> Home <input type="checkbox"/> Business Phone	
I identify as: <input type="checkbox"/> Male <input type="checkbox"/> Female <input type="checkbox"/> X (Gender variant/Non-binary)	<input type="checkbox"/> Nebraska Resident <input type="checkbox"/> Non-Resident	Ethnicity (select one): <input type="checkbox"/> Hispanic or Latino <input type="checkbox"/> Not Hispanic or Latino	Race (Select one or more): <input type="checkbox"/> White <input type="checkbox"/> Native Hawaiian/Other Pacific Islander	<input type="checkbox"/> Asian <input type="checkbox"/> American Indian/Alaska Native <input type="checkbox"/> Black/African-American

COURSE NUMBER	TITLE	START DATE	COST
-	-	-	\$
-	-	-	\$
-	-	-	\$
-	-	-	\$

SIGNATURE

Check Cash Mastercard AMEX Discover VISA V Code _____

Name as it appears on card: _____

Exp. Date _____ CC # _____

Billing agency (INCLUDE LETTER OF AUTHORIZATION ON COMPANY LETTERHEAD)

For the protection of your personal credit card information, do not email this form to SCC. If faxing, only use the fax number listed or verify with SCC before using another SCC fax number.

Would you like a receipt mailed to you?
 Yes No

SCC Staff Tuition Waiver ()

TOTAL DUE

FOR OFFICE USE ONLY

ID# _____
DE _____

Submission of this form indicates that I understand: 1) that my registration is complete and that I am accountable for the tuition and fees and subject to a grade in the courses listed; 2) that should I officially drop, cancel, or withdraw, any refund in tuition will be determined by the date I submit my request to Continuing Education; 3) that failure to attend a course does not constitute an official drop/withdrawal; 4) the personal information contained herein is correct as shown; and 5) any changes in SSN, legal name, address, residency, etc. must follow the College procedures in the Student Handbook and College Catalog. SCC is an Equal-Opportunity co-educational college and does not discriminate based on race, color, religion, sex*, age, marital status, national origin, ethnicity, veteran status, sexual orientation, disability, or other factors prohibited by law or College policy. www.southeast.edu/diversity * The U.S. Department of Education's Office for Civil Rights enforces Title IX's prohibition on discrimination on the basis of sex to also include discrimination based on gender identity.