

# Arts, Crafts & Hobbies

Fall 2022

## NEW! Decoupage Pumpkins

What a great craft to transition your porch from summer to fall. We have pressed fresh blooms all season to prepare for this one-of-a-kind class on a real pumpkin. A hint of summer with a touch of fall, you'll have a ball getting your decoupage on!

All supplies provided, including the pumpkin.

**Keyword: Pumpkins**

Sept. 6	T	6-7:30 p.m.	\$39
NE City, GRMS	Michel	AREA-6062-NCFA	

## NEW! Create Your Succulent Pumpkin!

Do you need a stunning centerpiece for your Thanksgiving table or the perfect hostess gift? This unique class offers both a seasonal decoration and a plant you can enjoy all year. Adorning pumpkins with succulents is a fun activity for you, your friends and family.

All supplies are provided, including the pumpkin, to help you create your living masterpiece!



**Keyword: Pumpkin**

Oct. 15	S	10-11:30 a.m.	\$39
NE City, GRMS	Michel	AREA-6063-NCFA	



## NEW! Holiday Wreath Making with Fresh Greens

Creating your own fresh greens holiday wreath is the perfect thing to get you in the spirit of the season. This class will offer instruction and all the supplies needed to freshen your front door with some holiday cheer!

All supplies provided.

**Keyword: Wreath**

Nov. 29	T	6-7:30 p.m.	\$39
NE City, GRMS	Michel	AREA-6064-NCFA	

## Handmade Greeting Cards

Do you want to create fabulous cards without buying a ton of new materials? Get inspired as we create six new cards with techniques that will spice up your favorite supplies. These are all NEW cards from previous classes. Zoom in with us for this card making class.

Register early because your card supply kit will be mailed one week prior to the class date. Gather these supplies: glue dots, tape runners or double-sided tape, pop dots, scissors, glue pen and piercing tool.

**Keyword: Cards**

Sept. 27	T	6-8 p.m.	\$36
LIVE Online, Zoom	Van Winkle		
Registration Deadline: Sept. 19		LLLX-0029-TCFCA	
Oct. 20	Th	6-8 p.m.	\$36
LIVE Online, Zoom	Van Winkle	LLLX-0029-TCFCB	
Registration Deadline: Oct. 7. Instructor is via Zoom.			

## Acrylic Painting: Nebraska Landscapes

Have a blast with Nebraska City's popular artist, Honey Lynn Self. Discover interesting techniques and gain tips from the artist, while creating a beautiful landscape. These pictures are all originals, painted by the instructor.

A 16-inch by 20-inch stretched canvas, paints and brushes will be provided.

**Keyword: Acrylic**



### Mountain Cabin

Sept. 6	T	6-8 p.m.	\$65
NE City, SFXP	Self	AREA-7775-NCFB	

### Autumn Comes

Sept. 19	M	6-8 p.m.	\$65
NE City, SFXP	Self	AREA-7775-NCFC	



## Watercolor Greeting Cards

Learn the basics of watercolor. We will explore a few watercolor painting techniques, color mixing and the best watercolor supplies to use. We will create several beautifully painted greeting cards.

A supply list will be emailed one week prior to class.

**Keyword: Watercolor**

Oct. 10	M	6:30-8:30 p.m.	\$45
LIVE Online, Zoom	Wolcott	AREA-7678-TCFPA	

## Shutterfly

Are you interested in learning the basics of Shutterfly? We will take a tour of the Shutterfly site, unlock some of the best features and open a whole new world of possibilities for gift options, such as creating a photo book. Join us for a look at this popular and versatile site for photo storage and so much more!

**Keyword: Shutterfly**

Nov. 8	T	6-7:30 p.m.	\$19
LIVE Online, Zoom	Segner	AREA-3105-TCFHA	

## Location Key

NE City, GRMS..... Grimm's Gardens, 1401 S. 11th St.  
NE City, SFXP ..... Self Expressions Gallery, 819 Central Ave.

These classes are delivered live via Zoom, not prerecorded videos. This allows you, the student, to participate from the comfort of your home. As our learning environment changes, we look forward to offering additional classes live online.

Have an idea for a class that could be offered live online? Please submit your idea at <https://bit.ly/scceonlinecourses>.

**Want to take a class that is listed as "LIVE Online, Zoom" but don't have a way to view the class or are having connection issues?** Contact your Learning Center to see if other options are available.

## BOB ROSS PAINTINGS

Bob Ross classes are for painters of all abilities and are taught by Certified Bob Ross instructors. Classes are currently offered via Zoom or in person depending on location. For Zoom classes, you will purchase supplies on your own prior to class. Supply lists will be sent to you via email so register early and be sure to include your email address. Students attending in-person classes will purchase the supplies needed to complete their painting in class. You will end class with a completed painting. Frames are not included. You may Zoom from the comfort of your home or from a Learning Center by contacting the Learning Center ahead of time.



### Bob Ross: Waterfall in the Woods

A gentle waterfall peeks through a lovely purple haze.



**Keyword: Ross**

Oct. 22 S 10 a.m.-4 p.m. \$45  
LIVE Online, Zoom Belik LLLX-1067-TCFCA

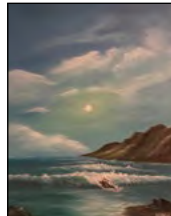
### Bob Ross: Green Ocean

Green tones dominate a gentle seascape.



**Keyword: Ross**

Nov. 5 S 10 a.m.-4 p.m. Belik \$45  
LIVE Online, Zoom AREA-7830-TCFNA  
NE City, NCLC, 103 AREA-7830-NCFA  
Class is live-streamed from Lincoln.



### Bob Ross: Wilderness Falls

A gentle waterfall cascades from a mountain lake.



**Keyword: Ross**

Dec. 10 S 10 a.m.-4 p.m. Belik \$45  
LIVE Online, Zoom AREA-7830-TCFPB

## Gratitude, Gimmicks & Going the Extra Mile

The real joy is in the giving. You will gather ideas for showing appreciation in a unique and clever way. From care packages to quick gestures of appreciation, we will explore many options. You will leave with a collection of meaningful ideas and a lot of inspiration to positively impact others!



**Keyword: Gratitude**

Nov. 17 Th 6-7:30 p.m. \$19  
LIVE Online, Zoom Van Winkle LLLX-1127-TCFCA

## Pictures Galore, Organizing & More!

So you have thousands of photos, now what? We will offer some strategies for tackling the overwhelming task of getting a system in place to safely store your precious memories. Also, what do you do with the dreaded box of photos buried in the closet? We have many solutions to offer!



**Keyword: Pictures**

Dec. 14 W 6-7:30 p.m. \$19  
LIVE Online, Zoom Van Winkle LLLX-0289-TCFCA

## Digitizing Memories

Do you have envelopes full of negatives and slides or boxes of photos? Discover how to preserve these in a more organized form by scanning them. We will look at scanning techniques and some of the devices to make scanning easy. Discussion will involve the software necessary to scan your negatives, slides and photos and look at the software "VueScan."



**Keyword: Memories**

Oct. 25-Nov. 1 T 6:30-8 p.m. \$29  
LIVE Online, Zoom Keller LLLX-0113-TCFCA

## Working with Resin

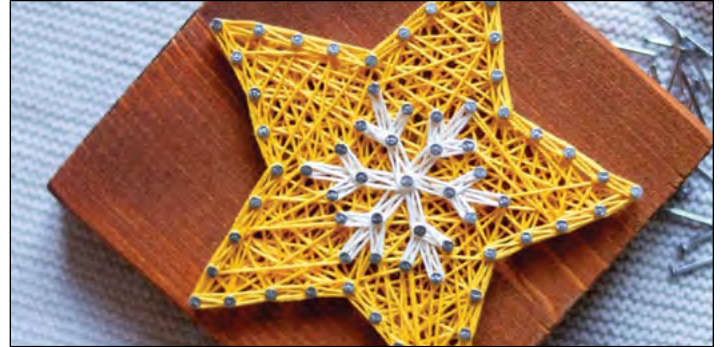
Epoxy resin can be used for many different purposes. The clear epoxy turns from a liquid to a solid and makes magical works of art. We will learn how to safely work with the resin to create beautiful pendants and key chains with embedded botanicals, glitter and gems.



A supply list will be sent prior to class.

**Keyword: Resin**

Oct. 22 S 2-4 p.m. \$35  
LIVE Online, Zoom Wolcott AREA-2186-TCFPA



## NEW! Star String Art Class

This colorful star string art is festive for the holidays or decorative year-round. String art is the weaving of colored string between hammered nails to create curved, geometric patterns.



A supply list will be sent to students prior to the class. For ages 12 and older.

**Keyword: String**

Nov. 12 S 9 a.m.-Noon \$29  
LIVE Online, Zoom Roseberry AREA-2665-TCFPA

## Mixed Media Art Journals

Join us for an evening of mixed media art on a mini canvas. Experiment with various art mediums. Beginner to advanced artists welcome for this fun project.



A supply list will be emailed one week prior to class.

**Keyword: Art**

Nov. 21 M 6:30-8:30 p.m. \$25  
LIVE Online, Zoom Wolcott AREA-2211-TCFPA

## Impasto Floral Painting

Impasto is a technique where paint is laid on thick and in layers. The beauty is in the rich visible brush strokes. When the painting is dry, it is full of so much texture that it appears to be coming out of the canvas.



A supply list will be sent prior to class.

**Keyword: Painting**

Nov. 10 Th 6:30-8:30 p.m. \$35  
LIVE Online, Zoom Wolcott AREA-8103-TCFPA

## Location Key

NE City, NCLC.....Learning Center at Nebraska City, 819 Central Ave.



These classes are delivered live via Zoom, not prerecorded videos. This allows you, the student, to participate from the comfort of your home. As our learning environment changes, we look forward to offering additional classes live online.

Have an idea for a class that could be offered live online? Please submit your idea at <https://bit.ly/scceonlinecourses>.

**Want to take a class that is listed as "LIVE Online, Zoom" but don't have a way to view the class or are having connection issues?** Contact your Learning Center to see if other options are available.

For more information, contact **Cindy Meyer** at 800-828-0072, ext. 3636, or [cmeyer@southeast.edu](mailto:cmeyer@southeast.edu)



### Alcohol Ink Art

Be creative with alcohol inks! With vibrant colors and many uses, experiment and create a beautiful pendant or mini works of art. Learn about the endless design and color possibilities of alcohol ink.



**Keyword: Ink**  
\$25

Oct. 20 Th 6:30-8:30 p.m.  
LIVE Online, Zoom Wolcott AREA-8101-TCFPA

### Slow Stitching

Experience slow stitching using embroidery and composition stitches to mindfully create a new unique piece of art fabric using needle and thread. Discover this hot new trend using new and vintage materials.



**Keyword: Stitching**  
\$39

Nov. 7 M 6:30-8:30 p.m.  
LIVE Online, Zoom Wolcott AREA-2617-TCFPB  
A supply list will be emailed one week prior to class.



### Crochet a Snowman Pouch

Crochet this cute snowman using basic stitches. It has a drawstring close and can be used as party favors or used to hold small special gifts, toys or candies.



Bring to class two skeins of size 4 or 5 yarn, one white and one in a color of your choice and a size H hook.

**Keyword: Crochet**

Nov. 3 Th 6:30-9 p.m.  
LIVE Online, Zoom Roseberry AREA-2634-TCFWA

\$19



These classes are delivered live via Zoom, not prerecorded videos. This allows you, the student, to participate from the comfort of your home. As our learning environment changes, we look forward to offering additional classes live online.

Have an idea for a class that could be offered live online? Please submit your idea at <https://bit.ly/scceonlinecourses>.

**Want to take a class that is listed as "LIVE Online, Zoom" but don't have a way to view the class or are having connection issues?** Contact your Learning Center to see if other options are available.

**Check out all classes offered at [southeast.edu/NebraskaCityLC](https://southeast.edu/NebraskaCityLC)  
Find us on Facebook at [facebook.com/SCCLearningCenteratNebraskaCity](https://facebook.com/SCCLearningCenteratNebraskaCity)**

**Cancellation/Refund Policy:** You must call the Continuing Education office at 402-437-2700 or 800-828-0072 the day before the class begins to receive a 100% refund. If you call the day of the class or after it has started, no refund will be issued. If a class is cancelled or student drops (according to the refund policy), refunds will be issued to the student, unless a third party has been formally billed by SCC Business Office. **ADA Reasonable Accommodations:** SCC provides services and reasonable accommodations to allow persons with disabilities to participate in educational programs and other College activities. For information on requesting ADA reasonable accommodations, contact the SCC Area Access/Equity/Diversity Office.



## Registration Form - Non-Credit Course

Today's Date

Complete this form with payment information and send via mail to Southeast Community College, Continuing Education, 301 S. 68th St. Place, Lincoln, NE 68510 OR FAX to 402-437-2703

**PLEASE PRINT**

The College requests, but does not require, a student provide their Social Security number during the admissions process. Visit [southeast.edu/collegecatalog](https://southeast.edu/collegecatalog) for additional information.

Social Security Number OR SCC Student ID Number		Birth Date	Name: Last		First	Middle Initial	
Residence Mailing Address			City	State	Zip	County #	
Email Address			Cell Phone		<input type="checkbox"/> Home <input type="checkbox"/> Business Phone		
I identify as: <input type="checkbox"/> Male <input type="checkbox"/> Female		<input type="checkbox"/> Nebraska Resident <input type="checkbox"/> Non-Resident		Ethnicity (select one): <input type="checkbox"/> Hispanic or Latino <input type="checkbox"/> Not Hispanic or Latino		Race (Select one or more): <input type="checkbox"/> White <input type="checkbox"/> Asian <input type="checkbox"/> Native Hawaiian/Other Pacific Islander <input type="checkbox"/> American Indian/Alaska Native <input type="checkbox"/> Black/African-American	

COURSE NUMBER	TITLE	START DATE	COST
-	-	-	\$
-	-	-	\$
-	-	-	\$
-	-	-	\$

### SIGNATURE

Check  Cash  Mastercard  AMEX  Discover  VISA V Code \_\_\_\_\_  
Name as it appears on card: \_\_\_\_\_  
Exp. Date \_\_\_\_\_ CC # \_\_\_\_\_  
Billing agency (INCLUDE LETTER OF AUTHORIZATION ON COMPANY LETTERHEAD)  
For the protection of your personal credit card information, do not email this form to SCC. If faxing, only use the fax number listed or verify with SCC before using another SCC fax number.

Would you like a receipt mailed to you?  
 Yes  No

SCC Staff Tuition Waiver	( )
<b>TOTAL DUE</b>	

<b>FOR OFFICE USE ONLY</b>
ID# _____
DE _____

Submission of this form indicates that I understand: 1) that my registration is complete and that I am accountable for the tuition and fees and subject to a grade in the courses listed; 2) that should I officially drop, cancel, or withdraw, any refund in tuition will be determined by the date I submit my request to Continuing Education; 3) that failure to attend a course does not constitute an official drop/withdrawal; 4) the personal information contained herein is correct as shown; and 5) any changes in SSN, legal name, address, residency, etc. must follow the College procedures in the Student Handbook and College Catalog. SCC is an Equal-Opportunity co-educational college and does not discriminate based on race, color, religion, sex\*, age, marital status, national origin, ethnicity, veteran status, sexual orientation, disability, or other factors prohibited by law or College policy. [southeast.edu/diversity](https://southeast.edu/diversity) \*The U.S. Department of Education's Office for Civil Rights enforces Title IX's prohibition on discrimination on the basis of sex to also include discrimination based on gender identity.



# Register Online for SCC Continuing Education Classes

You must have an email account to register online.

1. Go to <http://bit.ly/RegisterCE>.
2. **Search for your class** by entering either a **key word** in the title or the **course number**. Click **Submit**. (Enter information in only one field for broader results.)  
Key Word Example: *Driver*  
Course Number Example: *TRAN-3398*
3. **Select the course** for which you wish to register. Click **Submit**.
4. Enter your **personal information, certify your identification** and click **Submit**.  
\* You must provide your Social Security Number.
5. *Optional*: Enter your **Additional Registration Information** and click **Submit**.
6. If you want to register for additional classes, select **Search for more classes** under "Choose one of the following." If you are finished selecting the class(es) for which you want to register, select **Register now (check out)**. Select your **Payment Type**. Click **Submit**.
7. Enter your **payment information**. Click **Submit**.

You will see your **class acknowledgement** with information about your **SCC Student ID Number, SCC User ID** and **password**. **Print** this page for your records.

In the future it will be easy to register by logging in using your SCC User ID and password and it will not be necessary to provide your Social Security number again.

If you have problems getting registered, please call 402-437-2700 or 800-828-0072 for assistance.



---

301 S. 68th St. Place, Lincoln, NE 68510  
402-437-2700 • 800-828-0072 • FAX 402-437-2703  
[southeast.edu/continuing](http://southeast.edu/continuing)

\* The College requires a student's Social Security number as a condition for enrollment. A student's Social Security number information constitutes an "educational record" under FERPA.