



“DC Advantage has a 97% pass rate, and students average a 3.42 GPA in their dual-credit coursework.”

Get a jump-start on your college education with Southeast Community College’s dual-credit courses. DC Advantage allows high school students to earn both high school and college credit at the same time, **reducing time** and the cost to earn a post-secondary credential while easing the transition from high school to college.

By taking dual-credit classes you are on the fast-track to completing your General Education Learning Outcomes (GELOs) toward a Program of Study at SCC or transferring college credits to a two or four-year institution.



Dual-credit courses are offered onsite at your high school, online, via distance learning or at an SCC Learning Center near you. Best of all, dual-credit students within SCC’s 15-county service area are eligible for a scholarship **that reduces tuition by 50%**.

*“1 in 4 high school juniors are academically prepared to start college-level coursework”
-Building a Fast Track to College, Feb 2019*

Your Path To Possible

AS: Associate of Science Pathway

The AS Pathway will help you fast-track your completion of an Associate of Science degree through Southeast Community College. SCC offers the **Associate of Science** degree for students who plan to complete the first two years of a bachelor's degree in **agriculture, computer science, engineering, fisheries and wildlife, golf management, science, mathematics** or a **pre-professional** program such as pre-veterinarian, pre-dentistry or pre-medicine.

	Year 1 - 11th Grade		Year 2 - 12th Grade		Credits
	Fall Semester	Spring Semester	Fall Semester	Spring Semester	
Degree Pathway & Suggested DC Advantage Courses	MATH 1150: College Algebra 3 Credits Or MATH 2170: Applied Statistics 3 Credits	SPCH 1110: Public Speaking 3 Credits	ENGL 1010: Composition I 3 Credits	ENGL 1020: Composition II 3 Credits	24
	PSYC 1810: Intro to Psychology 3 Credits	HIST 2100: World History 3 Credits	POLS 1000: American Government 3 Credits	MUSC 1010: Intro to Music 3 Credits	

Scholarship Savings: 24 credit hours x \$111.00 = **\$2,664 = \$1,332**

24 of 60
Credits Earned
toward AS Degree

Associate of Science Degree Completion at SCC

Suggested Courses To Complete this Degree at SCC:	1 Additional Math: MATH 2170 – 3 MATH 1200 – 3 1 Additional Math or Science: MATH 1600 – 3	2 Lab Sciences: BIOS 1400 – 4 BIOS – 4	Electives: 22 Hours (7-8 courses) of elective courses geared toward your interest and focus area.	Students have many more options for courses at SCC – speak with an advisor about course availability.	35
---	--	---	---	---	-----------

SCC Full-Time tuition and fees for 30 credit hours is \$3,330
 SCC Full-time tuition and fees for 60 credit hours is \$6,660
 in-State Average Full-Time tuition and fees is \$15,216 at public 4-year school

60 of 60
Completed
Associate of Arts
Degree

Bachelor of Science Degree Completion at Four-Year College or University of your Choice*

[Provided all credits transfer—check with an SCC advisor about your institution]

To complete this degree at your four-year school:	To complete your Bachelor of Science degree, you will need to complete approximately 20 courses (4 semesters of five classes each, or 60 credit hours) after earning your Associates Degree at SCC. An SCC advisor can help you find a transfer catalog for your institution of choice.	60 of 120
---	---	------------------

120 of 120
Completed Bachelor's

AA: Associate of Arts Pathway

The AA Pathway will help you fast-track your completion of an Associate of Arts degree through Southeast Community College. SCC offers the **Associate of Arts** degree for students who plan to complete the first two years of a bachelor's degree in **education, English, history, humanities, journalism, social science** or **social work**.

	Year 1 - 11th Grade		Year 2 - 12th Grade		Credits
	Fall Semester	Spring Semester	Fall Semester	Spring Semester	
Degree Pathway & Suggested DC Advantage Courses	MATH 1150: College Algebra 3 Credits Or MATH 2170: Applied Statistics 3 Credits	SPCH 1110: Public Speaking 3 Credits	ENGL 1010: Composition I 3 Credits	ENGL 1020**: Composition II 3 Credits	25
	HIST 2010: American History I 3 Credits	MUSC 1010: Intro to Music 3 Credits	POLS 1000: American Government 3 Credits	BIOS 1010: General Biology with Lab 4 Credits	

****This course can be substituted with ENGL 2100 (Intro to Literature) or ENGL 2050 (Modern Fiction)**

Scholarship Savings: 25 credit hours x \$111.00 = \$2775 = \$1,387

25 of 60
Credits Earned
toward AA Degree

Associate of Arts Degree Completion at SCC

Suggested Courses To Complete this Degree at SCC:	1 Additional Science: FSDT 1350 – 3 CHEM 1090 - 4 1 Culture-Gender Studies: SOCI 2150 – 3 OR SOCI 1020 – 3	Choose 2 Humanities: ENGL 2100 – 3 ENGL 2050 – 3 THEA 1010 – 3 Choose 1 Social Science: PSYC 1810 – 3 SOCI 1010 – 3	Electives: 20 Hours (6-7 courses) of elective courses geared toward your interest and focus area.	Students have many more options for courses at SCC – speak with an advisor about course availability.	35
--	---	---	--	---	-----------

SCC Full-Time tuition and fees for 30 credit hours is \$3,330
 SCC Full-time tuition and fees for 60 credit hours is \$6,660
 in-State Average Full-Time tuition and fees is \$15,216 at public 4-year school

60 of 60
Completed
Associate of Arts
Degree

Bachelor of Arts Degree Completion at Four-Year College or University of your Choice*

[Provided all credits transfer—check with an SCC advisor about your institution]

To complete this degree at your four-year school:	To complete your Bachelor of Arts degree, you will need to complete approximately 20 courses (4 semesters of five classes each, or 60 credit hours) after earning your Associates Degree at SCC. An SCC advisor can help you find a transfer catalog for your institution of choice.	60 of 120
---	--	------------------

120 of 120
Completed Bachelor's

The Career Advising Center – Get Help Picking Your Classes

Meet with an SCC career advisor for guidance in your academic planning. An advisor can discuss your dual-credit courses and transfer options with you. Please contact Career Advising with questions or to schedule an appointment. Appointments can be held in person or via phone or video-conferencing.

To schedule an appointment, call us at:

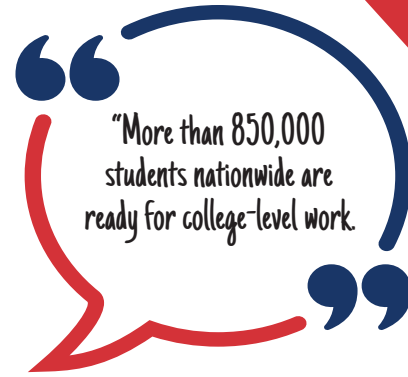
Beatrice: 402-228-8242

Lincoln: 402-437-2620

Milford: 402-761-8202

Email: admissions@southeast.edu

www.southeast.edu/admissions



Transferology – Find Out Where Your SCC Credits Can Take You

Transferology is an online tool that allows you to add your SCC courses and explore transfer options. Transferology makes it easy to find which four-year schools offer courses equivalent to your SCC courses and then apply them to specific majors. Go to www.transferology.com and click "Explore My Transfer Options" to set up an account.

Earn a Scholarship to Pay for Your Degree

Access College Early (ACE) Scholarship Program

The ACE Scholarship Program pays tuition and fees for qualified, low-income high school students to enroll in dual-credit courses from Nebraska colleges. High school students may apply for funding under this program by completing the ACE student Application, which is reviewed by the Coordinating Commission for award consideration.

For more information visit: ccpe.nebraska.gov/ACE

Learn to Dream (LTD) Scholarship

The LTD Scholarship is available to high school students who participate in the DC Advantage program. Students who qualify for free or reduced-price lunch are eligible for the scholarship. Please ask your high school counselor for more information and to see if you are eligible.

Learn to Dream pays for up to 60 semester credit hours (approximately \$6,120 of tuition) at Southeast Community College.

Contact the Learn to Dream Office at 402-437-2606, or visit the SCC website for an application.

www.southeast.edu/learntodreamscholars

For More Information:

Caleb Berg
Administrative Director, Career Academies (SENCAP) & Dual Credit
Southeast Community College
301 S. 68th St. Place
Lincoln, NE 68510
Office: 402-437-2859

Beatrice Campus

4771 W. Scott Rd., Beatrice NE 68310
800-233-5027 or 402-228-8214

Lincoln Campus

8800 O St., Lincoln NE 68520
800-642-4075 or 402-437-2600

Milford Campus

600 State St., Milford, NE 68405
800-933-7223 or 402-761-8243