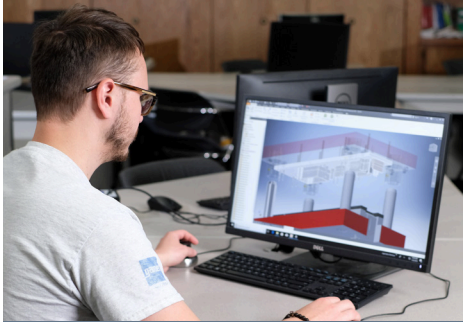




## Associate of Applied Science Degree

Credit Hours Required for Graduation:  
Associate of Applied Science Degree: ..... 70.5

Scan this code  
to access the  
course listing



For more information contact:

Kirby Taylor, Program Director  
402 761-8369, 800-933-7223 ext. 8369,  
ktaylor@southeast.edu

or the College Admissions Office  
Milford 402-761-8243, 800-933-7223 ext. 8243

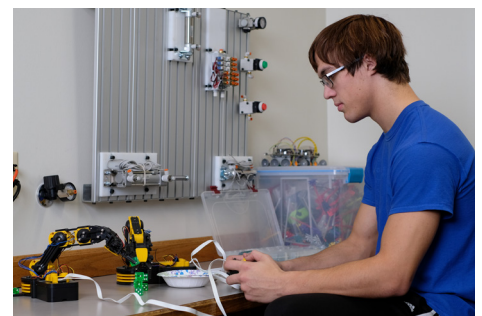
Equal Opportunity/NonDiscrimination Policy - It is the policy of Southeast Community College to provide equal opportunity and nondiscrimination in all admission, attendance, and employment matters to all persons without regard to race, color, religion, sex, age, marital status, national origin, ethnicity, veteran status, sexual orientation, disability, or other factors prohibited by law or College policy. Inquiries concerning the application of Southeast Community College's policies on equal opportunity and nondiscrimination should be directed to the Vice President for Access/Equity/Diversity, SCC Area Office, 301 S. 68th Street Place, Lincoln, NE 68510, 402-323-3412, FAX 402-323-3420, or jsoto@southeast.edu. This publication should not be considered a contract between SCC and any prospective student. SCC's Board of Governors reserves the right to make changes in this publication during the life of the publication and without notice.  
A0737 - MFGT (09/20)

Do you like to solve problems? Would you like a career that is fun and challenging at the same time? Manufacturing Engineering Technicians use problem-solving skills to design products and develop processes. As a technician, you will have the opportunity to positively impact society and improve quality of life.

## SCC is the Right Choice

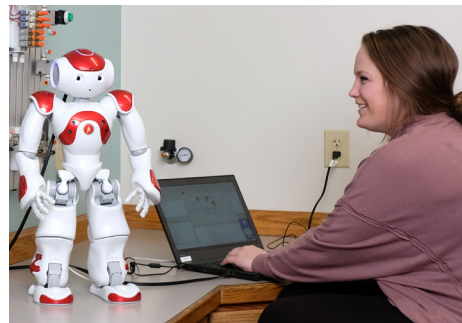
At SCC, you will enjoy learning in a fun, hands-on, engaged atmosphere. You'll work in teams throughout the program, giving you excellent real-world experience.

- You will graduate with a degree in high demand
- Nearly 100% of our students accept jobs in industry before graduation
- You'll be able to earn certifications and learn:
  - Robotics
  - Inventor
  - SolidWorks
  - 3D Printing
  - Programming
  - Design Thinking
  - Digital Engineering
  - Subtractive Manufacturing



*"Manufacturing Engineering provides a huge sense of accomplishment. Students who have graduated tell me what they are doing, and they say things like, 'I helped design parts that go into satellites' or 'I helped design the seat on that motorcycle.' It is a big impact on individuals and to the local communities."*

-Josh Libengood  
Program Instructor



*"In the Manufacturing Engineering program, we get to learn how to operate a variety of CAD software programs, PLC programming, robotics, and plant layout. Having these skills will greatly prepare us for employment after graduation. I highly recommend SCC for students who are wanting to follow a trade career. The instructors are amazing and will do whatever they can to help you achieve your goals!"*

-Drew Carroll, current student



## Top Career Options

- Product Designer
- Robot Programmer
- Engineering Technician
- Automation Engineer
- Facilities Layout Management

## Graduate Earnings

Recent graduates report an average starting salary of ^\$41,912 per year.

^ To maintain confidentiality for recent graduates, a three-year average is reported

### 2020-2021 Resident Estimated Expenses

Tuition/Fee Rate Per Credit Hour	\$111
Resident Tuition/Fees	\$7,825.50
Books	\$2,925
Supplies	\$122
Tools	\$175
<b>Total:</b>	<b>\$11,047.50</b>
Non-Resident Tuition/Fee Rate Per Credit Hour	\$132
Non-Resident Tuition/Fees	\$9,306