



Certificate

Credit Hours Required for Graduation:
Certificate: 12.0

Scan this code
to access the
course listing



For more information contact:

Kelly Cummins, Program Director
402-437-2780 or 800-642-4075, ext. 2780
kcummins@southeast.edu

or the College Admissions Office
Lincoln 402-437-2600, 800-642-4075, ext. 2600

Equal Opportunity/NonDiscrimination Policy - It is the policy of Southeast Community College to provide equal opportunity and nondiscrimination in all admission, attendance, and employment matters to all persons without regard to race, color, religion, sex, age, marital status, national origin, ethnicity, veteran status, sexual orientation, disability, or other factors prohibited by law or College policy. Inquiries concerning the application of Southeast Community College's policies on equal opportunity and nondiscrimination should be directed to the Vice President for Access/Equity/Diversity, SCC Area Office, 301 S. 68th Street Place, Lincoln, NE 68510, 402-323-3412, FAX 402-323-3420, or jsoto@southeast.edu. This publication should not be considered a contract between SCC and any prospective student. SCC's Board of Governors reserves the right to make changes in this publication during the life of the publication and without notice.

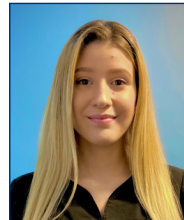
A0748 - POLY (08/20)

Tens of millions of adults have a sleep disorder, and while the sleep industry has grown, so have the careers to support it. Develop the skills of a sleep technologist in SCC's Polysomnographic Technology program. Our program will provide you the knowledge and skills to diagnose and treat sleep disorders such as sleep apnea, periodic limb movement disorder, narcolepsy, restless legs syndrome, insomnia, and nighttime behaviors like sleepwalking and REM sleep behavior disorder. Also, our program is ideal for students who have already obtained an associate degree in a health science-related field of study and are looking for a career change.

SCC is the Right Choice

- Our part-time program consists of six credit hours per term
- Our program is online, with clinical rotations being completed at an approved sleep disorders center
- Program graduates are eligible to sit for the internationally recognized credentialing exam offered by the Board of Registered Polysomnographic Technologists, the gold standard used to identify sleep technologist competency

"As a working mom of two, returning to school had always been difficult. SCC made it easy for me to take that step. I received the guidance and help I needed all throughout the program, making it easy for me to succeed. I am grateful to SCC for helping me achieve my goal and build a career for myself as an RPSGT."



-Betty Ramirez-Osorio,
Polysomnographic Technologist
The Valley Hospital, Ridgewood, New Jersey



Please see the program's website for information related to topics that include, but are not limited to, accreditation, state licensure or certification requirements, and other disclosures. SCC strives to promote transparency and encourages students to review the information carefully.

The Polysomnographic Technology program is accredited by the Commission on Accreditation of Allied Health Education Programs (www.caahep.org) upon the recommendation of the Committee on Accreditation of Polysomnographic Technologist Education (CoAPSG); Commission on Accreditation of Allied Health Education Programs (CAAHEP); 25400 U.S. Highway 19 North, Suite 158; Clearwater, FL 33763; 727-210-2350; www.caahep.org (<http://www.caahep.org/>)



Top Career Options

- Polysomnographic Technologist
- Sleep Technologist
- Sleep Technician
- Sleep Trainee

Graduate Earnings

Recent graduates report an average starting salary of ^\$48,048 per year.

^ To maintain confidentiality for recent graduates, a three-year average is reported.

2020-2021 Resident Estimated Expenses

Tuition/Fee Rate Per Credit Hour	\$111
Resident Tuition/Fees	\$1,332
Books	\$400
Supplies	\$100
Special Fees	\$110
Total:	\$1,942

Non-Resident Tuition/Fee Rate Per Credit Hour	\$132
Non-Resident Tuition/Fees	\$1,584