

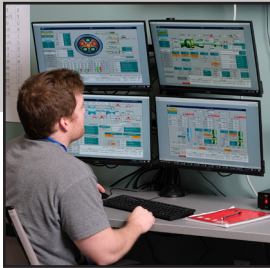
2021  
2022

**YOUR FUTURE. YOUR CHOICE.**

[www.southeast.edu/EnergyGenerationOperations](http://www.southeast.edu/EnergyGenerationOperations)

CHOOSE YOU!

**STEM**



SCC's program is the only one of its kind in the United States. Our unique control room simulator replicates real-time operations of a coal-fueled power plant, a gas turbine-power power plant and an electric transmission operations control center for an entire state! If you're looking for a bright future with dozens of career opportunities, this is the program for you!

Industrial operations are a vital part of our world. Operators are responsible for controlling and maintaining the machines and processes necessary to create a wide range of critical products used by everyone. SCC's Energy Generation Operations program provides students with training in multiple process systems, including electric energy generation, electrical distribution and transmission, water and wastewater treatment, pipeline operations, biofuels, chemical production, and many other critical industries.

## SCC is the Right Choice

- A core curriculum and exceptional hands-on lab equipment will prepare you to successfully operate in a wide variety of industrial facilities.
- Our program will prepare you for a stable, high-paying career in the energy, water treatment and process industries.
- Learn the technologies and skills to manage complex, interrelated operations, allowing you to move energy around the nation.
- Gain hands-on experience in the fundamentals of electrical systems, motors, pumps, and fluid control.
- Apply your knowledge managing real-world simulators.
- If you choose the Nuclear focus, you can earn the Nuclear Uniform Curriculum Program (NUCP) certification from nearby Cooper Nuclear Station and the nuclear industry.
- If you choose the water and wastewater treatment options, you can take the state water treatment licensing exam to go into careers in municipal water treatment.

## » Career Options

- Facility operator at a plant for biofuels production, coal-fired power, heating-cooling, hydroelectric power, nuclear power, fertilizer plant, materials manufacturing plant, refinery, and water/wastewater treatment

### Recent Graduates

report a  
yearly average  
starting salary of

**\$58,656**

Credit hours required for graduation:

#### Energy Generation Operations

»Certificate .....	15
»Diploma.....	30
»Associate of Applied Science .....	60*
*61 hours with Nuclear Focus	



Scan this code  
to access the  
course listing

For more information contact:

David Madcharo, Program Director  
402-761-8464, 800-933-7223 ext. 8464  
dmadcharo@southeast.edu

or the Admissions Office at  
402-437-2600  
admissions@southeast.edu



**Equal Opportunity/NonDiscrimination Policy** - It is the policy of Southeast Community College to provide equal opportunity and nondiscrimination in all admission, attendance, and employment matters to all persons without regard to race, color, religion, sex, age, marital status, national origin, ethnicity, veteran status, sexual orientation, disability, or other factors prohibited by law or College policy. Inquiries concerning the application of Southeast Community College's policies on equal opportunity and nondiscrimination should be directed to the Vice President for Access/Equity/Diversity, SCC Area Office, 301 S. 68th Street Place, Lincoln, NE 68510, 402-323-3412, FAX 402-323-3420, or jsoto@southeast.edu.

This publication should not be considered a contract between SCC and any prospective student. SCC's Board of Governors reserves the right to make changes to this publication during the life of the publication and without notice.

A0724 - ENER (06/21)

#### 2021-2022 estimated expenses to graduate with an award of 61 credit hours.

<b>Resident</b>	
Tuition/Fee Rate Per Credit Hour	\$114
Resident Tuition/Fees	\$6,954
Books	\$2,264
Supplies	\$93.50
<b>Total:</b>	<b>\$9,311.50</b>
<b>Non-Resident</b>	
Tuition/Fee Rate Per Credit Hour	\$135
Non-Resident Tuition/Fees	\$8,235