

2021
2022

YOUR FUTURE. YOUR CHOICE.

www.southeast.edu/Paramedic

CHOOSE YOU!

STEM



Paramedic training is intense and rigorous, but the rewards of serving others can be tremendous. If you thrive under pressure and enjoy helping people in distress, consider a career as a paramedic. SCC's Paramedic program takes its place in the industry very seriously by educating personnel for this fast-paced, ever-changing world of paramedicine.

Paramedics are often the lead member of a rescue team, with the most training and the most decision-making power. This means that the requirements to be a paramedic include strong leadership skills and the ability to perform complex life-saving functions in extremely stressful crisis situations.

A paramedic must keep a cool head and maintain authority among his or her team members in situations where a mistake can mean the difference between life and death.

Credit hours required for graduation:

Paramedic

»Associate of Applied Science61



Scan this code to access the course listing

For more information contact:

Program Director
402-437-2819
healthsciences@southeast.edu

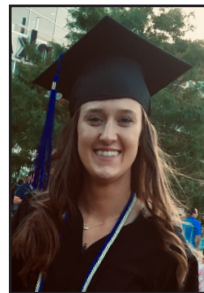
or the Admissions Office at
402-437-2600
admissions@southeast.edu

SCC's Paramedic program requires specific coursework to be completed prior to applying. You will work with Admissions and your College Advisor to help you select courses and begin your Path to Possible in the Paramedic program! Contact Admissions today to get started!

SCC is the Right Choice

- Classes and labs are face-to-face on the Lincoln Campus and can be completed in one year.
- Upon completing the program you will sit for the National Registry Paramedic (NRP) cognitive exam, and successful completion of this exam allows the candidate to become a National Registered Paramedic.
- 89% National Registry Pass Rate
92% Graduate Employment Rate

"I chose SCC because it offered the most diverse training as a paramedic, including classes, hands-on clinical hours in various areas of paramedicine and a comprehensive internship with practicing paramedics. It's designed to develop the critical thinking skills needed to perform in the field rather than only focusing on the written material."



- Natalie Potrzeba, Paramedic Graduate

Equal Opportunity/NonDiscrimination Policy - It is the policy of Southeast Community College to provide equal opportunity and nondiscrimination in all admission, attendance, and employment matters to all persons without regard to race, color, religion, sex, age, marital status, national origin, ethnicity, veteran status, sexual orientation, disability, or other factors prohibited by law or College policy. Inquiries concerning the application of Southeast Community College's policies on equal opportunity and nondiscrimination should be directed to the Vice President for Access/Equity/Diversity, SCC Area Office, 301 S. 68th Street Place, Lincoln, NE 68510, 402-323-3412, FAX 402-323-3420, or jsoto@southeast.edu.

This publication should not be considered a contract between SCC and any prospective student. SCC's Board of Governors reserves the right to make changes in this publication during the life of the publication and without notice.

A0744 - PARA (09/21)

» Career Options

- Paramedic
- Inpatient Emergency Care
- Ambulance Services/ Fire Department
- Health Education

Recent Graduates

report a yearly average starting salary of

\$34,736

The Paramedic program is accredited by the Commission on Accreditation of Allied Health Education Programs (www.caahep.org) upon the recommendation of the Committee on Accreditation of Educational Programs for the Emergency Medical Services Professions (CoAEMSP), 8301 Lakeview Parkway, Suite 111-312, Rowlett, TX 75085, www.coaemsp.org. Commission on Accreditation of Allied Health Education Programs, 727-210-2350, www.caahep.org

2021-2022 estimated expenses to graduate with an award of 61 credit hours.

| Resident | |
|----------------------------------|----------------|
| Tuition/Fee Rate Per Credit Hour | \$114 |
| Resident Tuition/Fees | \$6,954 |
| Books | \$600 |
| Supplies | \$100 |
| Special Fees | \$1,025 |
| Uniform | \$350 |
| Total: | \$9,029 |
| Non-Resident | |
| Tuition/Fee Rate Per Credit Hour | \$135 |
| Non-Resident Tuition/Fees | \$8,235 |